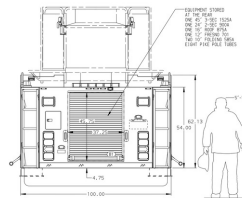
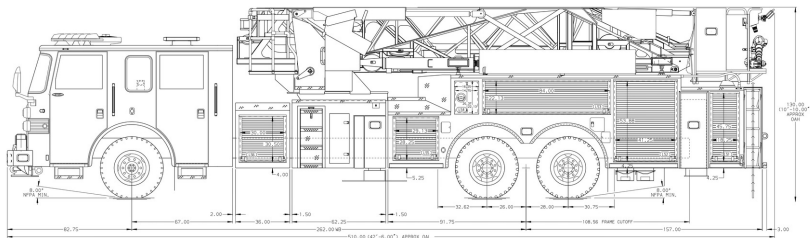


BODY 100" Ascendant Aerial Tower No Pump Alum Body COMPT, LEFT SIDE Full Height Roll-Up Top Doors COMPT, RIGHT SIDE Full Height Roll-Up Doors	WATER TANK Water Tank Not Required Foam System Foam System Not Required Foam Cell Foam Cell Not Required
---	--



CHASSIS Arrow XT Chassis	CAB 6700 Arrow XT Cab	AXLE, FRONT, CUSTON 23,000 lb Per Axle Rate	TRANSMISSION Allison 5th Gen, 4000 EVS P	PURPOSE 3 rd Compartment, No Pump, Lap Door	CROSSLAYS, 1.50" 1.50" Crosslays Not Required	SPEEDLAYS Speedlays Not Required	SAFETY Side Roll and Frontal Impact Protection
ENGINES 500 HP Cummins K12 Engine	BUMPERS 15" Extended Painted Aluminum	AXLE, REAR 48,000 lb Per Axle Rate		PIUM No Pump Required	CROSSLAYS, 2.50" 2.50" Crosslays Not Required	GENERATOR Hawthorn 12KW MID in 81	
NOTE: DIMENSIONS SHOWN ARE APPROXIMATE AND ARE SUBJECT TO MINOR DEVIATIONS AS MAY OCCUR OR BE NECESSARY IN CONSTRUCTION. MINOR DETAILS NOT SHOWN.							

L ARSENAL
TOUT POUR VOS INTERVENTIONS D'URGENCE

MAX. O.A.H. - 132.00" (11'-0")
MAX. O.A.L. - 504.00" (42'-0")

		JOB NO.	PRELIM
MANUFACTURING INC.		DATE	
TITLE NO. PUMP - NO TANK MONTREAL FIRE DEPARTMENT	BODY 6000 BID 6000	DRAW BY TCKA	10DEC18
DWS NO.	04-5575	SHEET NO. D	SHEET NO. 1 of 1