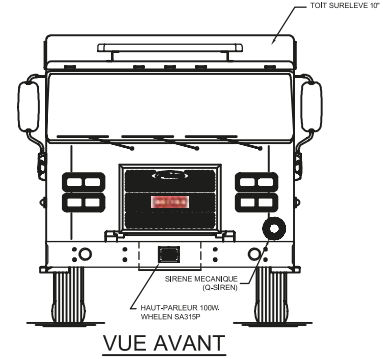
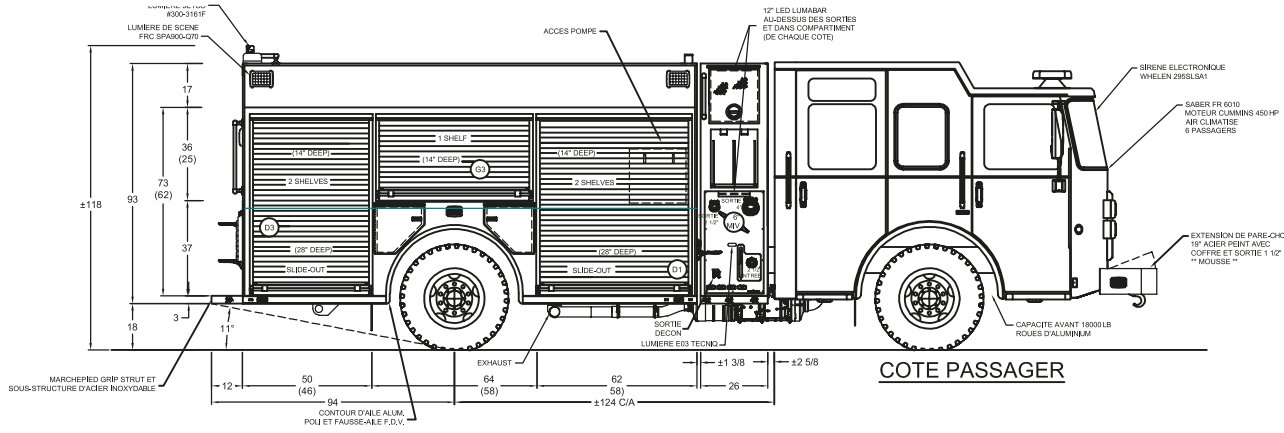


# AUTOPOMPE PIERCE MAXISABER MS1200

## PLAN CAMION

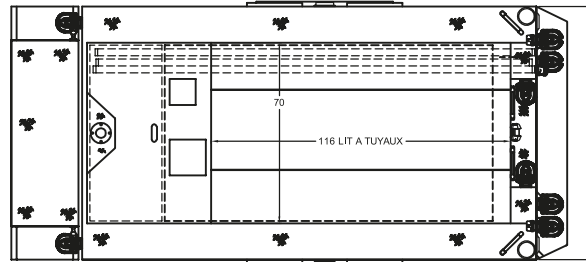


**NOTES:** \*\* ECLAIRAGE LUMABAR \*\*  
(COMPARTIMENTS EXTERIEURS)

\*\* LUMABAR AY-8220-32-C-0 (1) \*\*  
DANS COMPARTIMENT DE POMPE  
(SECTION PLOMBERIE)

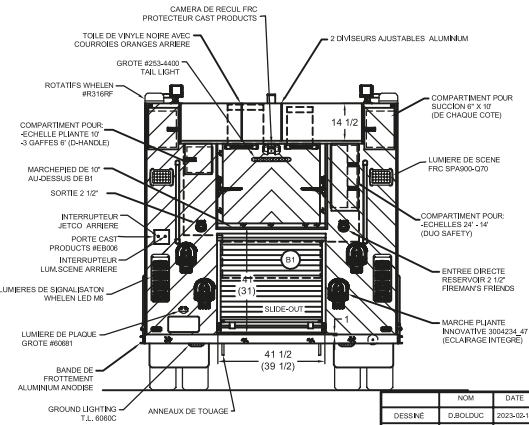
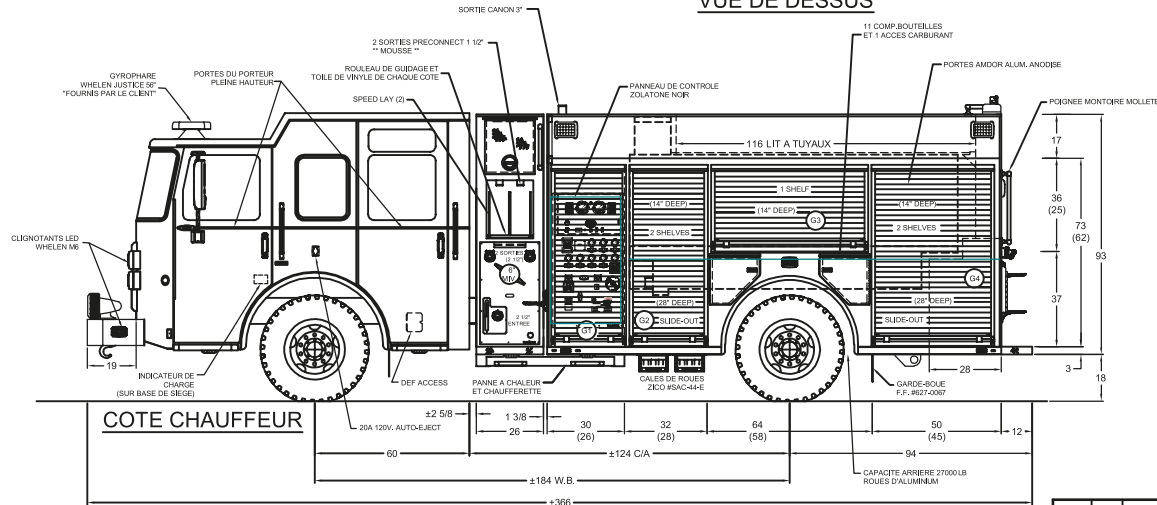
INTERIEUR DES COMPARTIMENTS: FINI BROUSSE

COMPARTIMENT DE POMPE: PEINT



RESERVOIR COPOLYMER  
1200 GAL. EAU (1000 GAL. IMP.)  
30 GAL. MOUSSE (25 GAL. IMP.)

POMPE WATEROUS CX 1500 GPM  
+ FOAMPRO 2001



EN CAS DE DISPARITE ENTRE CE DESSIN ET LE DEVIS TECHNIQUE, LE DEVIS TECHNIQUE PREVAUDRA.  
IN CASE OF DISCREPANCY BETWEEN THIS DRAWING AND THE TECHNICAL SPECIFICATIONS, THE TECHNICAL SPECIFICATIONS SHALL PREVAIL.

| ZONE | REV. | DESCRIPTION | DATE | APPROUVE |
|------|------|-------------|------|----------|
|      |      |             |      |          |
|      |      |             |      |          |

| NOM   | DATE    | MAXIMETAL  | Pierce |
|---|---------|--|--------|
| DESINE  | DJ/DJUC | 2023-02-14   |        |
| VERIFIE   |         |  |        |
| NOTE:   |         | MAXIMETAL INC. CERTIFIE ISO 9001:2015  |        |
| LES DIMENSIONS SONT APPROXIMATIVES ET SONT SUJET A CHANGEMENT SELON DES CONTINGENCES A LA CONSTRUCTION. CERTAINS PETITS DETAILS NE SONT PAS MONTES. |         | 9485, 256 AVENUE SAINT-GEORGES (QUEBEC) G5A 1L3 SANS FRANS: 1 800 375-6600 TELEPHONE: 418 226-6400 |        |
| PROPRIETE ET CONTENU INTELLECTUEL DE MAXIMETAL INC. TOUTE REPRODUCTION ET REPRODUCTION EST INTERDITE SANS LA PERMISSE ECRITE PREALABLE.             |         | TITRE: MS12  |        |
| NO DESSIN: ENGINEERING 0002   |         | ANSI   |        |