

**PARATECH®**

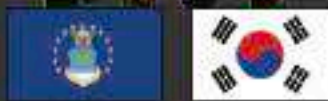
**RESCUE**

**TEAM**

**est. 1962**



# Timeline



**1962** WORLD'S FAMOUS PRY AXE INTRODUCED

**1965** THE HOOLIGAN TOOL, THE WORLD'S FIRST PRODUCTION "HALLIGAN" TYPE FORCIBLE TOOL IS INTRODUCED

**1976** MAXIFORCE® AIR LIFTING BAGS INTRODUCED TO THE UNITED STATES FIRE RESCUE SERVICE

**1979** PARATECH BECOMES THE FIRST U.S. MANUFACTURER OF A MOLDED, HIGH PRESSURE AIR LIFTING BAG

**1981** THE P-10 TRUCK MADE BY PARATECH FOR THE U.S.A. AIR FORCE STATIONED IN SOUTH KOREA

**1983** PARATECH INTRODUCES THE WORLD'S FIRST KEVLAR® REINFORCED AIR LIFTING BAGS UNDER ITS MAXIFORCE® TRADEMARK

**1984** PARATECH INTRODUCES THE AIRGUN 40 PNEUMATIC IMPACT TOOL

**1985** U.S. NAVY PURCHASES 500 AIRGUN 40S FOR SHIPBOARD FIREFIGHTING

**1992** RESCUE STRUTS, THE FIRST SELF-LOCKING COLLAPSE SUPPORT SYSTEMS IN THE WORLD ARE INTRODUCED

**1993** FIRST VEHICLE STABILIZATION (VSK) KIT CREATED

**1994** NORTHRIDGE, CA EARTHQUAKE: LOS ANGELES CITY & COUNTY RESCUE TEAMS USE MAXIFORCE® LIFTING BAGS, RESCUE STRUTS, PRT KITS AND PRY-AXES FOR RESCUE

**1995** KOBE, JAPAN EARTHQUAKE: MAXIFORCE® LIFTING BAGS, RESCUE STRUTS, PRT KITS AND PRY-AXES USED FOR RESCUE

**1998** PARATECH ACHIEVES ISO 9001 CERTIFICATION

**1999** ISTANBUL, TURKEY EARTHQUAKE: RESCUE STRUTS & MAXIFORCE® LIFTING BAGS BECOME A VITAL PART OF EARTHQUAKE PREPAREDNESS

**2000** LONGSHORE STRUTS DESIGNED & DEVELOPED FOR HIGH ANGLE COLLAPSE RESCUE

**2002** THE BUSTER TOOL IS DESIGNED TO MEET AND EXCEED FAA REGULATIONS FOR CRASH AXES

**2002** PARATECH EU IS ESTABLISHED IN DENMARK IN ORDER TO CREATE A STRONGER PRESENCE IN EUROPE

**2003** PARATECH RESCUE SUPPORT SYSTEMS ARE ADAPTED BY FEMA AS A STANDARD



**2004** UNITED KINGDOM STANDARDIZES ON PARATECH RESCUE STRUTS FOR THEIR COLLAPSE AND US&R OPERATIONS

**2005** THE SHORING HAMMER IS INTRODUCED AND USED THROUGHOUT NEW ORLEANS IN THE WAKE OF HURRICANE KATRINA

**2006** THE SMT™ (SPECIAL MISSION TENDER) IS INTRODUCED FOR QUICK AND EASY DEPLOYMENT AND PURCHASE OF PARATECH EQUIPMENT

**2007** THE WALER SYSTEM IS DEVELOPED

**2007** SINGAPORE CIVIL DEFENSE RESPONDS TO CHINA EARTHQUAKE WITH PARATECH EQUIPMENT

**2008** THE MULTI BASE IS DESIGNED FOR RESCUE SUPPORT SYSTEMS

**2009** PARATECH EQUIPMENT DEPLOYED TO L'AQUILA, ITALY EARTHQUAKE

**2010** PARATECH EQUIPMENT DEPLOYED TO HAITI EARTHQUAKE

**2010** THE STRONGEST 'ALL IN ONE' VEHICLE STABILIZER, THE TVS, (TWISTLOCK VEHICLE STABILIZER) IS INTRODUCED

**2012** ABSOLUTE RAKER-FIRST ALL MECHANICAL RAKER SHORE INTRODUCED

**2013** HYDRAULIC-FUSION-STRUT (HFS PARATECH'S FIRST HYDRAULIC RESCUE STRUT UNVEILED

**2014** DAMAGE CONTROL SYSTEMS (DCS) PARATECH DCS INSTALLED ON SWEDISH NAVY SHIPS

**2014** PARATECH INTRODUCES MAXIFORCE® G2 AIR LIFTING BAGS

**2014** THE TITAN CRASH AXE IS CREATED BY PARATECH, WITH INPUT FROM THE AIR FORCE'S PARARESCUEMEN

**2015** THE MULTIFORCE® AIR LIFTING BAG IS INTRODUCED

**2016** THE VSK CONTROLLER IS INTRODUCED

**2016** MULTIFORCE POSITIONING LIGHTS ARE INTRODUCED

**2017** THE ACMETHREAD STRUT DRIVER RETRO FIT KIT IS INTRODUCED

**2018** PARATECH INTRODUCES THE ACMETHREAD STRUT DRIVER

**2019** THE G3 DEADMAN CONTROLLERS AND VENTED COUPLINGS ARE INTRODUCED

**2020** THE RESCUE GUARDIAN AND G3 PRESET REGULATOR ARE INTRODUCED

**2024** PARATECH INTRODUCES MAXIFORCE® G3 AIR LIFTING BAGS



## Table of Contents

**05**

**Paratech  
Certified  
Training**

**06**

**Technical  
Rescue  
Response Unit**

**10**

**Rescue  
Support  
Systems**

**38**

**Vehicle  
Stabilization Kits**

**44**

**Multiforce Air  
Lifting Bags**

**46**

**Maxiforce  
Air Lifting  
Bags**

**62**

**Rescue Air  
Cushions**

**68**

**Forcible Entry  
Tools**

**76**

**Powered  
Impact Tools**

**82**

**Damage Control  
Systems**

**86**

**Paratech  
Resources**

**87**

**Paratech Ordering Terms,  
Conditions & Warranty**

**88**

**Paratech Rescue  
Award**

**89**

**Paratech  
Contacts**

# PARATECH®

For more than 60 years, Paratech has been combining innovative design with cutting edge technology to provide the highest quality and most user-friendly tools available for rescue and beyond. From the world's most advanced collapse support solutions to some of the world's strongest forcible entry tools, Paratech makes technical rescue operations simpler, safer and more productive.

Our product lines are comprised of Rescue Support Systems, MAXIFORCE® Air Lifting Bags, MULTIFORCE® Air Lifting Bag, Powered Impact Tools, Forcible Entry Tools, Rescue Air Cushions, and the ultimate collection of essential Paratech products...the TRRU™.

Technical Rescue Response Trailer equipped specifically for either urban search and rescue or trench rescue, both are loaded with all of the necessary Paratech tools needed for technical rescue.

Paratech products are extensively used by fire departments worldwide including, but not limited to: all major U.S. cities, Copenhagen, Tokyo, London, Lyon, Madrid, Singapore and Istanbul. In addition, they have been selected by disaster agencies in the United States, Denmark, Japan, United Kingdom and Turkey as the standard for their rescue teams and technical rescue caches.



# PARATECH®

## Training & Tactics Courses

Paratech is a firm believer that instruction in rescue operations should be delivered by companies specialized in doing just that.

We have received requests from customers around the world to provide instruction specific to Paratech products – The Paratech Training and Tactics program delivers this in two ways: the Paratech online workshops and through our comprehensive Training and Tactics Program where we have partnered with some of the best Training Companies around the world, use QR code for quotes and further information.

Learn More



### Training Highlights



**Vehicle & Machinery**

Stabilizing and lifting light vehicles using air bags and StrutDrivers.



**Building Collapse**

Solid Sole, Flying, Split Sole and Corner Rakers. Window and door shores. Internal shoring and sloped floor shore.



**Lifting & Moving**

Using Paratech Monopod, Bipod and Tripods to lift and move objects using ropes and come-alongs.

The curriculum can also be customized to the department preferences: Trench Rescue, Structure Collapse, Confined Space, Agriculture Rescue and Vehicle Machinery Tech.



**Lifting & Moving**

Single, double and daisy chain lifts with Maxiforce Air Lifting Bags. Rescue Air Cushions and MultiForce Air Lifting Bags lifts.



**Heavy Vehicle Stabilization and Lifting**

Stabilizing and lifting heavy vehicles using air bags and HydraFusion struts.



# Technical Rescue Response Unit

## Paratech Technical Rescue Response Units - (TRRU)

The Paratech TRRU is a low maintenance and cost effective solution for fire departments and rescue teams.

A neat and organized mobile container for all your Paratech Technical Rescue Equipment.

Always ready to deploy.

All the features of a rescue truck without the cost of indoor storage, maintenance and upkeep.

### COMPACT TRRU





# Technical Rescue Response Unit

**Covers all your equipment needs for:**

- Man and Machine Rescue
- Trench Rescue
- Building Collapse Rescue
- Heavy Vehicle Rescue

**ADVANCED TRRU**



**Learn More**



# Technical Rescue Response Unit

## Compact TRRU

The Compact TRRU is fully capable of initiating an array of US&R and vehicle rescues. It is small enough to maneuver through narrow streets, but big enough to respond to a vast array of rescues. The Compact TRRU is self-contained, can be remote positioned and is ready to roll at any time. This versatile trailer consists of a comprehensive set of Paratech equipment in one compact, mobile package. Includes an Absolute Flying Raker, Remote Placement MULTIFORCE Bag Kit, Man and Machine Kit, Air Control Case, Pakhammer Kit, PRT Kit and much much more.



- **Compact Cache**
- **Compact Size**
- **Remote Positioning**
- **Easy Maneuvering**

Part No.	Description
22-700180	Compact TRRU, US
22-700200EU	Compact TRRU, International



**Compact Size**



**Organized**



**Full Overview**

**Learn More**



**Easy Access**



**Secure**



# Technical Rescue Response Unit

## Advanced TRRU

The Advanced TRRU consists of the most comprehensive set of Paratech rescue equipment you will ever find in one mobile unit. It comes fully loaded for US&R, trench and heavy vehicle rescues. The Advanced TRRU is self-contained. It can be remote positioned and is ready to roll at any time. The Advanced TRRU is big enough to hold an advance logistics point or even a small command post. Includes full Raker Sets, Flying Raker Sets, Trench Kits, Remote Placement MULTIFORCE Bag Kit, Man and Machine Kit, Air Control Case, Pakhammer Kit, PRT Kit and much much more.

- **Roof Command Light**
- **Extensive Cache**
- **40% larger**
- **Remote Positioning**
- **Rack for Air Lifting Bags**
- **Cache Graphics**
- **LED Lighting**



Part No.	Description
22-700238	Advanced TRRU, with Generator and Data Kiosk
22-700248	Advanced TRRU, without Generator and Data Kiosk



**Advanced Lighting Package**



**MAXIFORCE® Master Rack**



**Storage Layout Graphics for Easy Reloading of Equipment**



**Learn More**









## The Paratech Rescue Support System

The Paratech Rescue Support System is truly a “go anywhere” system. Designed to be effective for the simplest to the most demanding deployment, there isn't a more comprehensive, scalable and straightforward system than Paratech's. Whether you choose the precision of the AcmeThread Strut, the automatic locking collar of the LockStroke Strut or the added length of the LongShore Strut, they are strong and versatile enough for nearly every collapse and stabilization scenario.

The entire system includes 5 sizes of AcmeThread Struts, 4 sizes of LockStroke Struts, 3 sizes of HydraFusion Struts, 4 sizes of AcmeThread/LockStroke Extensions, 5 sizes of LongShore Struts, 4 LongShore Extensions and over 20 interchangeable base plates designed to support a wide variety of contact points. All aluminum alloy components of the Rescue Support System are hard coat anodized to reduce electrical conductivity and increase strength and durability.

Truly a system that will not stop growing, Paratech's Rescue Support System can be used in excavation collapse (trenches, mines), vehicle stabilization, structural collapse and reinforcement, or wherever there is a need for quick, strong and safe vertical or horizontal shoring.

### Structural Shoring

Earthquakes, construction collapse, cave-ins, floods and structural fire damage require a collapse rescue system designed for the purpose of extracting victims in a safe and timely manner.

### Vehicle Stabilization

Paratech Vehicle Stabilization Kits have the strength and flexibility to handle any size vehicle anytime, anywhere. This includes sub compact cars, buses, cement trucks and even locomotives. Additionally, these components provide the extra value of being completely interchangeable with your other Paratech equipment for building collapse and trench rescue scenarios.



Trench

### Trench Shoring

Paratech's pneumatic Rescue Struts allow for remote placement and easy locking as well as safe, remote removal. Used in combination with our Waler System, trench rescue has never been faster, easier or safer.

### Special Applications

To be used in combination with Paratech's LongShore, AcmeThread and LockStroke Struts, a wide variety of bases and accessories are available to assist in numerous special application scenarios. These include, but in no way limited to: elevator shaft access and victim retrieval, high angle applications, confined space work and trench rescue.

Add-on kits include: Tripod, Bipod, Monopod and Elevator Support Unit Kits.



Building Collapse



Train Stabilization



# Rescue Support Systems

## RESCUE GUARDIAN

**Part No. 22-796RG1**

The most advanced monitoring and alarm system for technical rescue available. Remotely **monitor multiple Rescue Guardians at once on either Android or iPhone** operating systems. Receive notifications of any change in status. Designed by rescue professionals for rescue professionals. The ultimate in rescue monitoring technology.

### **Monitors:**

Load, Vibration, Incline

### **Wirelessly Transmits:**

Load change, Seismic activity, Incline data

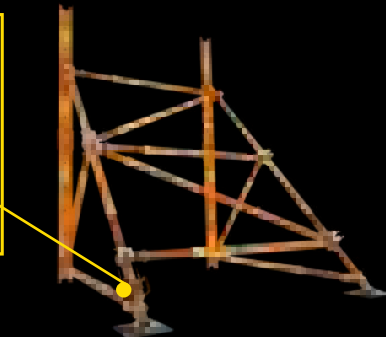
### **Warning System:**

6 high powered red LEDs high decibel auditory alarm

### **Notifications via Bluetooth**

### **Applications:**

Structural Collapse (Raker Shoring, Vertical Shoring), Vehicle Stabilization, Trench Rescue, Stand-alone monitoring



### **Long Battery Life**

under continuous usage in low-power monitoring mode. Includes a low battery warning. Easily replaceable and available lithium ion batteries.

### **Advanced Technology**

**for all types of rescues**



**Download The App Here!**

### **Easy To Use**

**and Very Customizable**

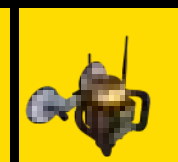


### **Remote Monitoring App**

Very secure and very flexible. Use loaded presets for standard applications or adjust them to custom, savable settings based on your requirements. This software is designed to be intuitive and easy to learn. Future ready for upgrades and updates.



**Use in-line with rescue struts Numerous Mounting Configurations Available!**





# Rescue Support Systems

## Rescue Guardian 1 Kit



### 22-796RG1-1K

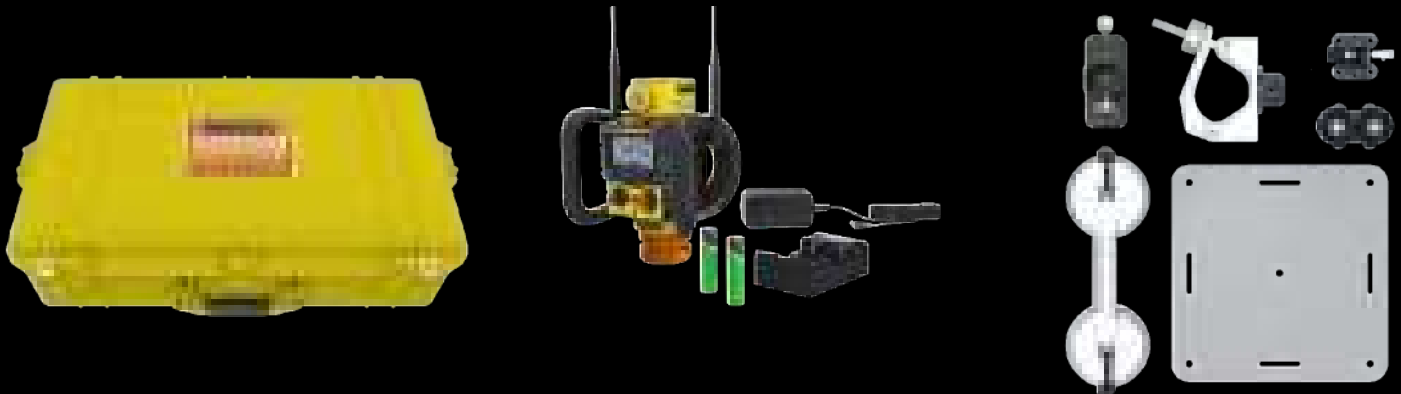
Part No.	Description	Quantity
2-796RG1	Rescue Guardian	1
22-796598	Rescue Guardian Magnet Clamp	1
22-796699	Rescue Guardian Clamp and Clevis	1
22-796625	Rescue Guardian Nailing Plate	1
22-796627	Rescue Guardian Suction	1
22-796634	Rescue Guardian Base Clamp	1
22-796663	Rescue Guardian Carrying Case	1
22-796678	Rescue Guardian Adpt. Plate	1

## Rescue Guardian 2 Kit



### 22-796RG1-2K

Part No.	Description	Quantity
2-796RG1	Rescue Guardian	2
22-796598	Rescue Guardian Magnet Clamp	1
22-796699	Rescue Guardian Clamp and Clevis	1
22-796625	Rescue Guardian Nailing Plate	1
22-796627	Rescue Guardian Suction	1
22-796634	Rescue Guardian Base Clamp	1
22-796663	Rescue Guardian Carrying Case	1
22-796678	Rescue Guardian Adpt. Plate	2





# Rescue Support Systems

RSS Comparison	AcmeThread	LockStroke	LongShore	HydraFusion
<b>SIZES</b>	5	4	5	3
<b>LENGTHS</b>	12–88 in (31–224 cm)	19–89 in (48–226 cm)	26–198 in (66–503 cm)	18.3–47.9 in (46.2–121.2 cm)
<b>EXTENSIONS</b>	4	4	4	AcmeThread & LongShore
<b>EXTENSION LENGTHS</b>	6–36 in (15–91 cm)	6–36 in (15–91 cm)	12–67 in (30.5–170 cm)	6–67 in (15–170 cm)
<b>AUTO LOCKING COLLAR</b>	NO	YES	NO	NO
<b>FINE ADJUSTMENT</b>	YES	YES with attachment	YES	YES
<b>REMOTE PLACEMENT</b>	YES	YES	YES	YES
<b>TRENCH STABILIZATION</b>	YES	YES	YES	YES
<b>COLLAPSE STABILIZATION</b>	YES	YES	YES	YES
<b>VEHICLE STABILIZATION</b>	YES	YES	YES	YES

## AcmeThread Strut

The Paratech AcmeThread Struts are comprised of a 2½"/6.35cm diameter Acme threaded aluminum movable solid shaft that extends out of a 3"/7.62 diameter aluminum tube. The AcmeThread is a square thread that allows full surface contact of the shaft through the collar and the collar full surface contact on the tube to transfer load directly to ground. AcmeThread Struts can be extended manually or pneumatically with air, carbon dioxide or nitrogen.

Place strut into position, 'EXTEND' threaded shaft into desired length, 'SPIN' collar to 'LOCK' the strut.

It is as easy as...

### EXTEND & SPIN TO LOCK

Adjustments to the threaded shaft can be made in ANY increment up to the maximum length of the strut.

## LockStroke Strut

The Paratech LockStroke Struts are comprised of a 2½"/6.35cm diameter grooved solid aluminum movable shaft that extends out of a 3"/7.62 diameter aluminum tube. LockStroke Struts have a ball bearing filled collar that locks automatically when the shaft extends either manually or pneumatically with air, carbon dioxide or nitrogen.

'SET' strut into position, 'EXTEND' strut with air or manually and the strut 'LOCKS' automatically.

It is as easy as...

### SET, EXTEND TO LOCK

## Over 20 Interchangeable Bases

All aluminum alloy components of the rescue support system are hard coat anodized to increase strength and durability

Machine Knurled Non-Slip Locking Collar  
AcmeThread-Longshore-HydraFusion

**The Strongest & Most Versatile Struts In The World**

### Paratech AcmeThread & LockStroke Load Table

#### Working Load Chart At The Following Safety Factors

Length	2:1 lb	kg	4:1 lb	kg
2 ft (0.6m)	43,500	19,731	21,750	9,866
4 ft (1.2m)	40,000	18,144	20,000	9,072
6 ft (1.8m)	28,250	12,814	14,125	6,407
8 ft (2.4m)	24,050	10,909	12,025	5,455
10 ft (3.0m)	10,725	4,865	5,360	2,431
12 ft (3.6m)	7,660	3,475	3,830	1,737

#### 5 YEAR WARRANTY

The data in this table has been confirmed by physical testing, witnessed and certified by an independent, licensed structural engineering company.





## LongShore Strut

The Paratech LongShore Struts are comprised of a 3"/7.62cm diameter threaded aluminum movable shaft that extends out of a 3 1/2"/8.89cm diameter aluminum tube. The square thread allows full surface contact of the shaft through the collar and the collar full surface contact on the tube to transfer load directly to ground. LongShore Struts can be extended manually or pneumatically with air, carbon dioxide or nitrogen.

Place strut into position, 'EXTEND' threaded shaft into desired length, 'SPIN' collar to 'LOCK' the strut.

It is as easy as...

### EXTEND & SPIN TO LOCK

Adjustments to the threaded shaft can be made in ANY increment up to the maximum length of the strut.

## HydraFusion Strut

The Paratech HydraFusion Struts (AcmeThread) are comprised of a 3"/7.62cm diameter threaded aluminum shaft that extends hydraulically out of a 3 1/2"/8.89cm diameter aluminum tube. The hydraulic lift capacity is 10 U.S. tons with a 2:1 safety factor. Once the strut is extended, the AcmeThread collar is spun down to the locked position and creates a 20,000 lbs. 4:1 safety factor for stabilization.



## Longshore Struts are Stronger and Longer for Your Heaviest and Highest Support Situations



### Paratech AcmeThread & LockStroke Load Table

Working Load Chart At The Following Safety Factors

Length	2:1 lb	kg	4:1 lb	kg
6 ft (1.8m)	44,000	19.958	22,000	9.980
7 ft (2.1m)	44,000	19.958	22,000	9.980
8 ft (2.4m)	40,000	18.144	20,000	9.072
9 ft (2.7m)	32,000	14.515	16,000	7.257
10 ft (3.0m)	24,000	10.886	12,000	5.443
11 ft (3.3m)	22,000	9.979	11,000	4.990
12 ft (3.6m)	20,000	9.072	10,000	4.536
13 ft (3.9m)	14,000	6.350	7,000	3.175
14 ft (4.2m)	12,000	5.443	6,000	2.722
15 ft (4.5m)	9,000	4.082	4,500	2.041
16 ft (4.8m)	6,000	2.722	3,000	1.361

### 5 YEAR WARRANTY

The data in this table has been confirmed by physical testing, witnessed and certified by an independent, licensed structural engineering company.



# Rescue Support Systems

## HydraFusion Struts

The Paratech HydraFusion Struts offer end users the ability to lift up to 10 U.S. tons with a safety factor of 2:1 and to stabilize up to 20,000 lbs (9,0 t). with a safety factor of 4:1. The innovative, built in Dual Shaft End Adapter (patent pending) allows users to safely use Paratech LongShore, LockStroke or AcmeThread Struts and Extensions in conjunction with the incredible lifting ability of the HydraFusion Strut.

## HydraFusion Strut Kits

All lift 10 tons (9,0 t) with a 2:1 safety factor.  
All shore 20,000 lbs. (9,0 t) with a 4:1 safety factor

### HydraFusion Strut 04 Kit

Part No. 22-79HA04K



### HydraFusion Strut 10 Kit

Part No. 22-79HA10K



### HydraFusion Strut 16 Kit

Part No. 22-79HA16K



### HydraFusion Pump With Gauge

With Gauge and Hose Only

Part No. 22-790020G



No-spill, flat-face hydraulic coupling with a non-conductive 10 ft (3 m) kink-resistant hose. Two speed, single acting, lightweight, 10,000 psi (690 bar), metal hydraulic pump.



## HydraFusion Struts Accessories

### Strut Converter

Use a Strut Converter to attach a base to the top end of a HydraFusion Strut

Part No. 22-796035



### HydraFusion Longshore Screw Adapter

Part No. 22-790019



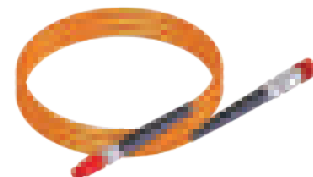
### HydraFusion AcmeThread Screw Adapter

Part No. 22-790067



### HydraFusion Hose Extension

Part No. 22-790030X



Part No.	Description	Lift Height		Net Weight		Ship Weight	
		in	cm	lb	kg	lb	kg
22-79HA04	HydraFusion Strut 04 18.3 – 22.0 in / 46,5 – 55,8 cm	4	10.2	18.7	8,5	19.7	8,9
22-79HA10	HydraFusion Strut 10 25.2 – 35.0 in / 64,0 – 88,9 cm	10	25.4	28.3	12,8	29.3	13,3
22-79HA16	HydraFusion Strut 16 32.0 – 47.9 in / 81,3 – 121,7 cm	15.9	40.4	37.2	16,9	38.2	17,3
22-79HA04K	HydraFusion Strut 04 Kit	4	10.2	45.5	20,6	46.5	21,0
22-79HA10K	HydraFusion Strut 10 Kit	10	25.4	55.1	25,0	56.1	25,4
22-79HA16K	HydraFusion Strut 16 Kit	15.9	40.4	64.0	29,0	65.0	29,4
22-790020G	HydraFusion Pump with Gauge	N/A	N/A	23.2	1,5	24.5	11,1
22-790019	HydraFusion LongShore Screw Adapter	N/A	N/A	6.1	2,7	7.5	3,4
22-790067	HydraFusion AcmeThread Screw Adapter	N/A	N/A	6.5	2,9	8.1	3,6
22-796035	Strut Converter	N/A	N/A	2.7	1,2	3.1	1,4



## ACMETHREAD STRUTDRIVER

**LIFT Like No Other!**

**Paratech AcmeThread strut driver:**  
easy to use, quick to deploy, strong and safe



### AcmeThread Strut Driver

Medium duty strut lifting device integrated into our extremely strong and versatile AcmeThread Rescue Strut. Safe, easy, fast lifting. 6,000 lbs (2,721 kg) lifting capacity. Limitless Functionality; Vehicle Stabilization, Structural Collapse Rescue, Trench Rescue. Made from aircraft grade aluminum housings, alloy steel gears and hardened ball bearings, making lifting smooth and easy. Contoured gear box designed to resist dragging during vehicle lifts. Directional safety mechanism to insure strut will only travel in the direction it indicates.

#### Available in Two AcmeThread Strut Sizes

AcmeThread Strut Driver: 25-36 in / 64-91 cm (22.6 lbs / 10,2 kg)  
Part No. 22-796200SD

AcmeThread Strut Driver: 37-58 in / 94-147 cm (29.6 lbs / 13,4 kg)  
Part No. 22-796202SD



### AcmeThread Strut Driver Retro Fit Kit

Can be attached to any of your existing AcmeThread struts to utilize all the same functionalities of the AcmeThread Strut Driver. This kit includes a removable gearbox and tube end adapter. Can be fully installed and still manually adjusted. An additional tube end adapter is necessary if using strut extensions. Accessories to this kit include the 3/4" (19mm) Hex Wrench and strut Carrying Handle.

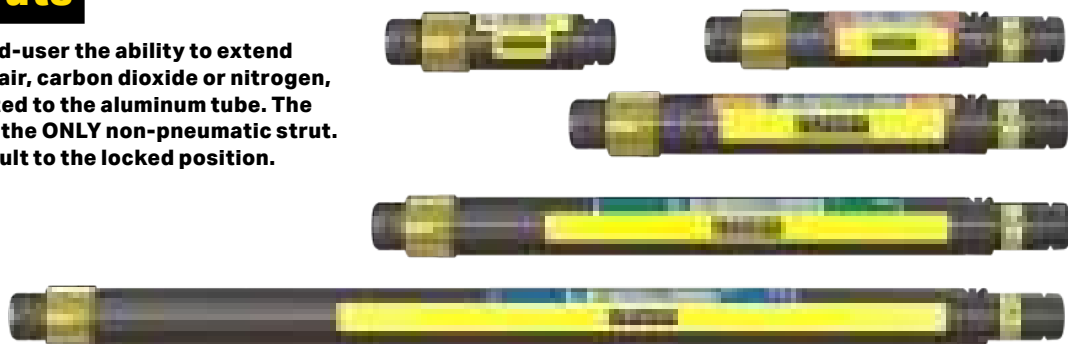


Description	Weight
Kit with Hex Ratchet Handle: 22-79SDRFH	17.2 lbs / 7,8 kg
Kit without Hex Ratchet Handle 22-79SDRF	14.4 lbs / 6,5 kg
Hex Ratchet Handle: 22-797727	2.8 lbs / 1,3 kg
Carrying Handle: 22-797042E	2.4 lbs / 1,1 kg

# Rescue Support Systems

## AcmeThread Struts

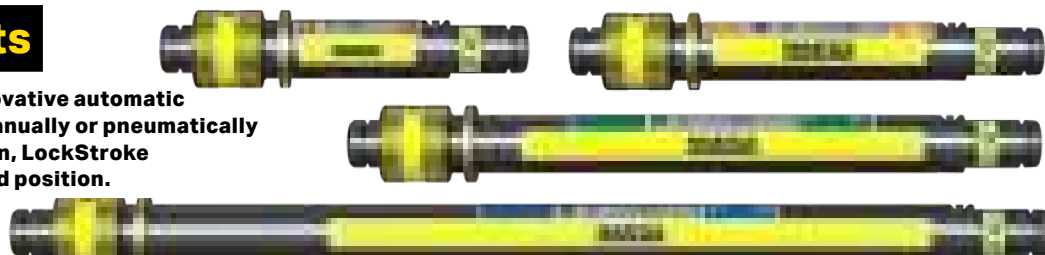
AcmeThread Struts offer the end-user the ability to extend manually or pneumatically with air, carbon dioxide or nitrogen, utilizing the recessed nipple fitted to the aluminum tube. The 12-15 inch / 30.5-38.1 cm strut is the ONLY non-pneumatic strut. AcmeThread Struts always default to the locked position.



Part No.	Description	Net Weight		Ship Weight	
		lb	kg	lb	kg
22-796212	AcmeThread Strut 12-15 in / 30-38 cm	6.6	3,0	7.1	3,2
22-796206	AcmeThread Strut 19-25 in / 48-64 cm	11.2	5,1	11.7	5,3
22-796200	AcmeThread Strut 25-36 in / 64-91 cm	14.9	6,8	15.4	6,9
22-796202	AcmeThread Strut 37-58 in / 94-147 cm	22.4	10,2	22.9	10,4
22-796204	AcmeThread Strut 56-88 in / 142-224 cm	32.6	14,8	33.1	15,0

## LockStroke Struts

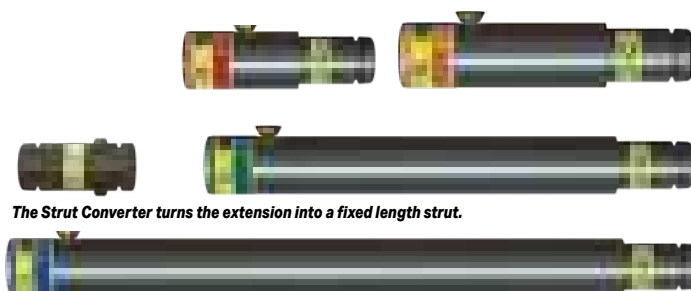
LockStroke Struts feature an innovative automatic locking collar. Activated either manually or pneumatically with air, carbon dioxide or nitrogen, LockStroke Struts always default to the locked position.



Part No.	Description	Net Weight		Ship Weight	
		lb	kg	lb	kg
22-796006	LockStroke Strut 19-25 in / 48-64 cm	12.7	5,8	13.2	5,9
22-796000	LockStroke Strut 25-36 in / 64-91 cm	16.5	7,5	17.0	7,7
22-796002	LockStroke Strut 36-58 in / 94-147 cm	24.0	10,9	24.5	11,1
22-796004	LockStroke Strut 55-89 in / 142-226 cm	35.7	16,2	36.2	16,4

## AcmeThread & LockStroke Strut Extensions

Paratech offers four sizes of extensions 6, 12, 24 and 36 inches, 15, 30, 61 and 91 cm. Which can be used with the AcmeThread & LockStroke Struts. Extensions are attached to the strut on the solid end.



The Strut Converter turns the extension into a fixed length strut.

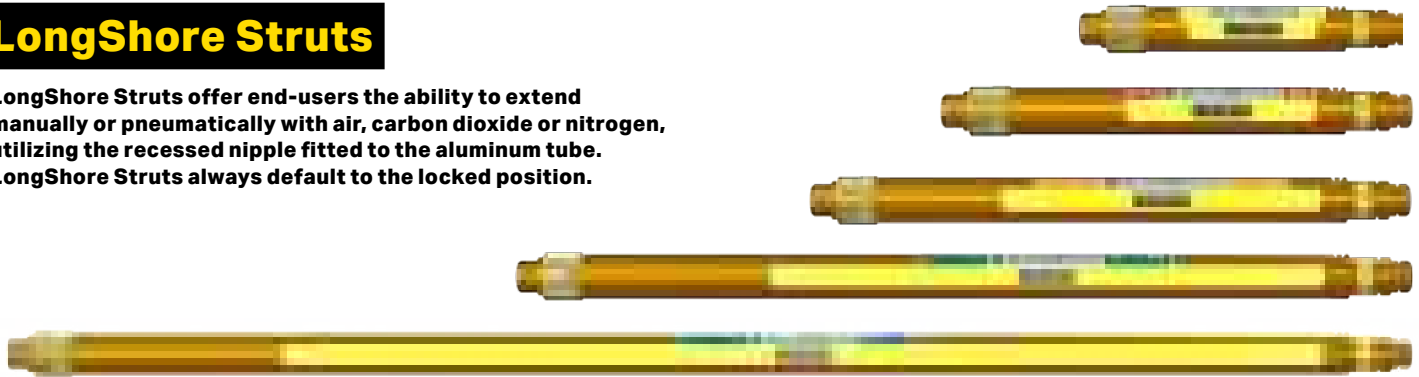
Part No.	Description	Net Weight		Ship Weight	
		lb	kg	lb	kg
22-796035	Strut Converter	2.7	1,2	3.1	1,4
22-796017	Strut Extension 6 in / 15 cm	3.8	1,7	4.2	1,9
22-796012	Strut Extension 12 in / 30 cm	4.6	2,1	5.0	2,3
22-796024	Strut Extension 24 in / 61 cm	7.1	3,2	8.0	3,6
22-796036	Strut Extension 36 in / 91 cm	9.7	4,4	11.0	5,0

For all lengths displayed above. CLOSED position: inches rounded up - decimals not shown. OPEN position: inches rounded down - decimals not shown.



## LongShore Struts

LongShore Struts offer end-users the ability to extend manually or pneumatically with air, carbon dioxide or nitrogen, utilizing the recessed nipple fitted to the aluminum tube. LongShore Struts always default to the locked position.



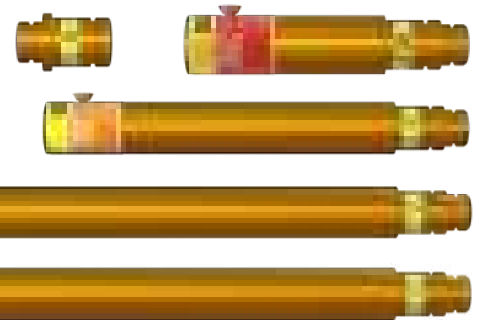
Part No.	Description	Net Weight		Ship Weight	
		lb	kg	lb	kg
22-796710	LongShore Strut 203 26-36 in / 66-91 cm	16.0	7,3	17.0	7,7
22-796720	LongShore Strut 304 36-50 in / 91-127 cm	22.0	10,0	23.0	10,5
22-796730	LongShore Strut 406 48-73 in / 122-185 cm	28.0	12,7	29.0	13,2
22-796360	LongShore Strut 610 72-116 in / 183-295 cm	41.0	18,6	42.0	19,1
22-796390	LongShore Strut 1016 114-198 in / 290-503 cm	65.0	29,5	66.0	29,9

## LongShore Struts Extensions

Paratech offers four sizes of LongShore Extensions 12, 24, 48 and 67 inches (30, 61, 122, 170 cm). Extensions are attached to the strut on the solid end.

### LongShore Struts Only

The extension converter turns the extension into a fixed length strut.



Part No.	Description	Net Weight		Ship Weight	
		lb	kg	lb	kg
22-796037	LongShore Converter	2.5	1,1	2.6	1,2
22-796341	LongShore Extension 12 in / 30 cm	6.2	2,8	7.2	3,3
22-796342	LongShore Extension 24 in / 61 cm	9.2	4,2	10.2	4,6
22-796356	LongShore Extension 48 in / 122 cm	15.0	6,8	16.0	7,3
22-796376	LongShore Extension 67 in / 170 cm	20.0	9,1	21.0	9,5

## LongShore Adjustable Brace

The B23 and B57 are manually adjusted by twisting the inner threaded shaft to increase or decrease the length of the brace. Utilized in Paratech's Flying Raker Kit (B23) and Midpoint Brace Kit (B57). Utilized to support in both compression as well as tension applied forces.



Part No.	Description	Net Weight		Ship Weight	
		lb	kg	lb	kg
22-796348	LongShore Adjustable Brace B23 26-36 in / 66-91 cm	15.0	6,8	16.0	7,3
22-796350	LongShore Adjustable Brace B57 60-85 in / 152-216 cm	32.7	14,5	33.7	15,3

For all lengths displayed above. CLOSED position: inches rounded up - decimals not shown. OPEN position: inches rounded down - decimals not shown.



## Bases & End Plates

Designed to be the strut's contact point, Paratech's wide assortment of aluminum alloy bases and end plates offer unparalleled versatility in the widest range of collapse support situations.

### For Use With:

 **LockStroke**

 **AcmeThread**

 **LongShore**

 **HydraFusion**



#### V BASE

The V Base has a 90° V that will fit any right angle. Features two nailing holes, should it need to be nailed to a piece of wood used in other applications  
Net Weight: 1.4lb; 0,6kg  
Part No. 22-796090



#### ADJUSTABLE THREADED CONNECTOR

For LockStroke Strut  
Net Weight: 2.2lb; 1,0kg  
Part No. 22-796160



#### SPRING LOADED CONNECTOR

For LockStroke Strut  
Net Weight: 2.2lb; 1,0kg  
Part No. 22-796170



#### HINGED BASE PLATE 12 with ANCHOR RING

12 IN / 30,5 CM 45°  
Hinged base with eight 1 in / 2.5 cm picket holes  
Net Weight: 12.0lb; 5,4kg  
Part No. 22-796180C



#### SWIVEL BASE 12

12 IN / 30,5 CM  
20° swivel base with eight 1 in / 2.5 cm picket holes  
Net Weight: 9.3lb; 4,2kg  
Part No. 22-796180B



#### RIGID BASE 12

12 IN / 30,5 CM  
Net Weight: 8.6lb; 3,9kg  
Part No. 22-796180A



#### DUAL BASE

24 IN / 61 CM  
Two 360 degree rotatable, quick locking hinged bases with anchor rings.  
Net Weight: 25.8lb; 11,7kg  
Part No. 22-796180D



#### HINGED BASE WITH ANCHOR RING

6 IN / 15.2 CM  
45° hinged base  
Net Weight: 4.5lb; 2,0kg  
Part No. 22-796150



#### SWIVEL BASE 6

6 IN / 15.2 CM  
20° swivel base  
Net Weight: 3.3lb; 1,5kg  
Part No. 22-796060



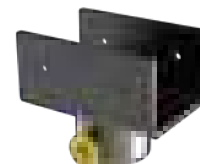
#### RIGID BASE 6

6 IN / 15.2 CM  
Net Weight: 2.8lb; 1,3kg  
Part No. 22-796070



#### CHANNEL BASE

Used for structural collapse to support beams  
Net Weight: 2.5lb; 1,1kg  
U.S.: 6 IN x 6 IN  
15,2 CM x 15,2 CM  
Part No. 22-796136  
Metric: 6.3 IN x 7 IN  
16 CM x 17,8 CM  
Part No. 22-796133



#### CHANNEL BASE

Used for structural collapse to support beams  
Net Weight: 2.0lb; 0,9kg  
US: 4 IN x 6 IN  
10,2 CM x 15,2 CM  
Part No. 22-796134  
Metric: 4.3 IN x 6 IN  
10,9 CM x 15,2 CM  
Part No. 22-796131





**MULTI CHAIN BASE**  
Takes 3/8" (10mm) and 1/2" (13mm)  
\*Including square chains  
Net Weight: 3.16lb; 1,64kg  
Part No. 22-796685



**MULTI BASE**  
Can be used as a V Base, cone Base, Wedge Base and will accept a 3/8" chain (10mm),  
Net Weight: 2.0lb; 0,9kg  
Part No. 22-796025



**CONVEX MULTI BASE**  
Multi-purpose vehicle stabilization with Chain Wedge for 3/8" chain (10mm), V and cone feature  
Net Weight: 3.2lb; 1,4kg  
Part No. 22-796269



**SPIKE BASE**  
The Spike Base has replaceable stainless steel spikes that dig into sheet metal and a V and cone feature for Veh. Stabilization  
Net Weight: 1.2lb; 0,5kg  
Part No. 22-797687



**CONTOUR BASE**  
Contoured to grip surfaces dealing in vehicle stabilization kits  
Net Weight: 1.7lb; 0,8kg  
Part No. 22-796270



**TRIPOD HEAD**  
To be used in conjunction with either AcmeThread or LongShore struts to create a tripod  
Net Weight: 9.0lb; 4,1kg  
Part No. 22-796010



**MONOPOD HEAD / PULLEY**  
MonoPod Head / Pulley is designed for blind shaft elevator rescue, trench and high angle rescues  
Net Weight: 7lb; 3,2kg  
Part No. 22-796540



**HITCH BASE**  
Can be utilized by putting into a 2" hitch receiver and with the MonoPod kit so you can have a high point anchor off of your vehicle  
Net Weight: 13.4lb; 6,1kg  
Part No. 22-796575



**BIPOD HEAD**  
The BiPod Head is to be used in conjunction with the (2) bipod base Plates to create the BiPod  
Net Weight: 33 lb; 15 kg  
Part No. 22-796820



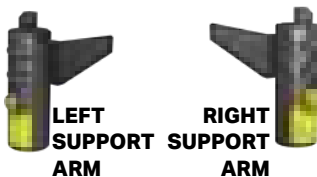
**BIPOD BASE**  
The BiPod Base Plate is a 12 in / 30,5 cm base plate designed with the full articulating cup  
Net Weight: 11.1lb; 5,0kg  
Part No. 22-796180E



**CLAMP & CLEVIS**  
Designed for use with the Flying Raker and Midpoint brace kit in conjunction with the Raker Kits  
Net Weight: 5.0lb; 2,3kg  
Part No. 22-796330



**ANGLED RUBBER BASE**  
Angled rubber base used with the elevator support arms lock elevator in position during rescues  
Net Weight: 1.7lb; 0,8kg  
Part No. 22-796266



**ELEVATOR SUPPORT ARMS**  
Left and Right Elevator Support Arms used with angled rubber base to lock elevator in position during rescues  
Net Weight: 8.5lb; 3,9kg  
Part No. 22-796260L or Part No. 22-796260R



**ANGLE BASE**  
The angle base can be used just like the 4x4 or 6x6 bases. Designed for use when you cannot make full contact around the header or sole Plate.  
Net Weight: 1.6lb; 0,7kg  
Part No. 22-796092



**VSK BASE 6**  
6 in / 15,2 cm base integrated with ratchet belt and anchor ring making vehicle stabilization quicker & easier  
Net Weight: 18.5lb; 8,4kg  
Part No. 22-796331



**VSK BASE 12**  
12 in / 30,5 cm base integrated ratchet belt and anchor ring making vehicle stabilization quicker & easier  
Net Weight: 23.5lb; 10,6kg  
Part No. 22-796308

# Rescue Support Systems

## Waler Rails



Part No.	Description	Net Weight		Ship Weight	
		lb	kg	lb	kg
22-796295	Spot Shore Rail 18 in / 45,7 cm	11.2	5,1	13.2	6,0
22-796281	Waler Rail 6 ft / 1,8 m	42.8	19,4	44.8	20,3
22-796283	Waler Rail 8 ft / 2,4 m	58.7	26,6	60.7	27,5

## Waler System

Part No.	Description	Net Weight		Ship Weight	
		lb	kg	lb	kg
22-796282	Waler System	501.6	227,6	529.6	240,2

Part No.	Description	Quantity	Part No.	Description	Quantity
22-796281	Waler Rail 6 ft / 1,8 m	4	22-796285	Stop Block	16
22-796283	Waler Rail 8 ft / 2,4 m	4	22-796287	Waler Connector	4

## Waler Accessories



### Waler Stop Block

Net Weight: 1.0lb 0,5kg  
Part No. 22-796285



### L-Trench Adapter Set

Net Weight: 8.4lb 3,8kg  
Part No. 22-796425



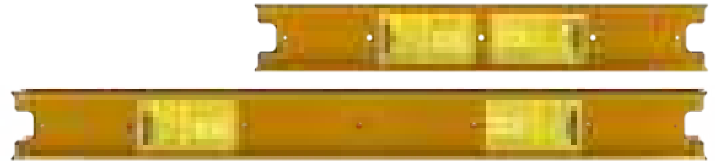
### Waler Connector

Net Weight: 19.9lb 9,0kg  
Part No. 22-796287



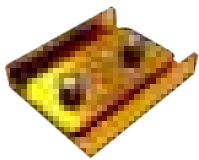


## LongShore Raker Rails



Part No.	Description	Net Weight		Ship Weight	
		lb	kg	lb	kg
22-796258B	Raker Rail 4 48 in / 122 cm	13.7	6,2	14.7	6,7
22-796258C	Raker Rail 6 72 in / 183 cm	20.7	9,4	21.7	9,8

## Raker Accessories



**RAKER RAIL SPLICE**  
Net Weight: 7.5lb; 3,4kg  
Part No. 22-796469



**45 DEGREE BASE**  
Net Weight: 13.5lb; 6,1kg  
Part No. 22-796690



**NAILING PAD WITH CLAMP**  
Net Weight: 9.9lb; 4,5kg  
Part No. 22-796310



**RAKER ANGLE BASE**  
Net Weight: 5.6lb; 2,5kg  
Part No. 22-796475



**LATCH HOLDER**  
Net Weight: 1lb; 0,4kg  
Part No. 22-796689



**RAKER RAIL LATCH**  
Net Weight: 3.2lb; 1,5kg  
Part No. 22-796250



**RAKER JUNCTION BASE**  
Net Weight: 7.3lb; 3,3kg  
Part No. 22-796290



**RAIL JUNCTION**  
Net Weight: 9.7lb; 4,4kg  
Part No. 22-796280



**STRUT DISTRIBUTOR MODULE**  
Net Weight: 0.5lb; 0,2kg  
Part No. 22-796395



"For use with dual controller. Can connect up to 5 modules to shoot 6 struts at one time."

## Air Supply Components



**DUAL DEADMAN STRUT CONTROLLER G3**  
250 PSI / 17.2 BAR  
Net Weight: 3.1lb; 1,6kg  
Part No. 22-796103G3



**STRUT REGULATOR G3**  
5,500-0 PSI / 379.2-0 BAR  
Part No. 22-895400G3  
US Net Weight: 3.8lb; 1,7kg  
Part No. 22-895400DG3  
METRIC Net Weight: 3.9lb; 1,8kg



**VSK V2 CONTROLLER**  
25 PSI / 1,7 BAR  
Net Weight: 2.4lb; 1,0kg  
Part No. 22-796V02

## Legacy Air Hoses

Air Hoses for Rescue Struts and 150 PSI / 10.3 Bar Air

3/8 IN / 9.5 mm diameter



Length	Red	Yellow	Gray	Blue	Black	Green
16 ft / 5 m (2.5 lb / 1,1 kg)	22-890516	22-890515	22-890518	22-890514	22-890513	22-890517
32 ft / 10 m (4.5 lb / 2,0 kg)	22-890521	22-890520	22-890525	22-890523	22-890522	22-890524
50 ft / 15 m (7.0 lb / 3,2 kg)	22-890541	22-890542	22-890545	22-890543	22-890546	22-890544

# Rescue Support Systems

## Trench Control Kit

Everything needed to address a Trench Rescue scenario.  
Deploy up to four struts at a time with the Strut Distributor Module and Dual Deadman Strut Controller

Part No.	Net Weight	
	lb	kg
22-796TCK US	53.4	24.2
22-796TCKD METRIC	75.4	34.2

Part No.	Description	Quantity
22-796103G3	Dual Deadman Strut Controller	1
22-895400G3	Strut Regulator G3 CGA / DIN	1
22-796395	Strut Distributor Module	6
22-890513	Air Hose, Black 16ft / 5m	1
22-890520	Air Hose, Yellow 32ft / 10m	2
22-890521	Air Hose, Red 32ft / 10m	2
22-890522	Air Hose, Black 32ft / 10m	1
22-890523	Air Hose, Blue 32ft / 10m	1
22-890524	Air Hose, Green 32ft / 10m	1
22-890525	Air Hose, Gray 32ft / 10m	1
22-796TCC	Carrying Case with Insert, Strut	1



## Rescue Support Systems Accessories



### Chain, 20Ft X 6.1m with Hooks

Grade 100

Net Weight: 33.5lb; 15,2kg

Part No. 22-796165EU

Part No. 22-796C1H



### Ratchet Belt with Finger Hook 27 Ft / 8.2 M

Capacity: 3,300 lb; 1,497 kg Working  
10,000 lb; 4,536 kg Breaking

Net Weight: 5.9lb; 2,7kg

Part No. 22-890553



### Tie Down Keys with J Hook

Net Weight: 5.0lb; 2,3kg

Part No. 22-796161



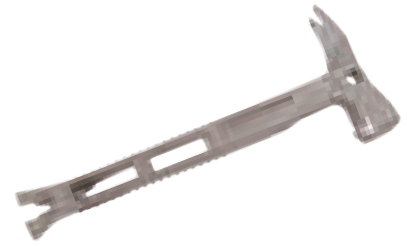


## Advanced Ty Strut Release Tool

The new patent pending Ty Strut Release Tool is designed to be used to place Paratech struts into a trench or hard to reach places and to tighten or loosen struts.  
Net Weight: 2.2lb; 1,0kg  
Part No. 22-796845

## Basic Ty Strut Release Tool

Ty Strut Release Tool without LockStroke Release Mechanism  
Net Weight: 1.44lb; 0,65kg  
Part No. 22-796840



## Shoring Hammer

The multi-functional shoring hammer  
Net Weight: 2.9lb; 1,3kg  
Part No. 22-796430



## Clip 3.0IN / 7,6CM

(for AcmeThread & LockStroke Struts)  
Net Weight: 0.6lb; 0,3kg  
Part No. 22-796182A



## Double Headed Picket

1 in / 2.5 cm x 40 in / 101,6 cm  
STL Picket Double Headed  
Net Weight: 9.5lb; 4,3kg  
Part No. 22-796P14

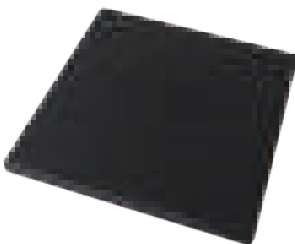


## RSS Carrying Handle

For use with both AcmeThread and LockStroke Struts and the AcmeThread Strut Driver  
Net Weight: 2.4lb; 1,1kg  
Part No. 22-797042E

## Clip 3.5IN / 8,9CM

(for LongShore Struts)  
Net Weight: 0.8lb; 0,8kg  
Part No. 22-796185A



## Non-Slip Neoprene Pad

15 x 15 x 1 IN  
38,1 x 38,1 x 2,5 CM  
Net Weight: 12.0lb; 5,4kg  
Part No. 22-890015



## RSS Carrying Strap

For use with all Paratech Rescue Struts  
Net Weight: 0.6lb; 0,2kg  
Part No. 22-790060



## Manual Compressor

(2 Stage)  
18.5 x 7.6 x 5.0 IN  
47,0 x 19,3 x 12,7 CM  
Net Weight: 14.7lb; 6,7kg  
Part No. 22-800400-180

# Rescue Support Systems

## Monopod/Pulley Kit

The Monopod Head Pulley attached to the 610 Long Shore Strut and can be used in applications such as High Angle, Elevator Shaft, Confined Space and Trench Rescue. The kit includes the Monopod Head & Pulley, Tri-Anchor Ring, Hinged Base Plate 12 with Anchor Ring and Carrying Case.

### Product Features:

- Pulley assembly allows the rope to come down the outside of the tube for ease of hoisting (5,000 lb / 2.268 kg capacity)
- 1,000 lb / 454 kg load capacity per hoist ring (4)
- Can be used with a life safety rope of up to 0.5 inch / 1.3 cm
- Monopod Head & Pulley Assembly is constructed of lightweight aluminum and stainless steel for strength

Part No.	Net Weight	
	lb	kg
22-796530	43.0	19,5

Part No.	Description	Quantity
22-890340	Carry Case, MonoPod	1
22-796540	Monopod Head/Pulley	1
22-796595	Tri-Anchor	1
22-796180C	Hinged Base Plate 12 w/ Anchor Ring	1



### HITCH BASE (optional)

Can be utilized by putting into a 2 inch / 5cm hitch receiver and in conjunction with the Monopod kit so you can have a high point anchor off of your vehicle  
Part No. 22-796575



## Bipod Kit

The Bipod Kit is designed for use in various lifting and moving applications. It can be utilized in High Angle Rescue, Cliff Overhang Rescue, Grain Elevator Rescue, Confined Space Rescue, Trench Rescue, Mine and Open Pit Rescues. The kit includes Bipod Head and two Hinged Base Plates with Anchor Rings.

Part No.	Net Weight	
	lb	kg
22-796810	60.6	27,5

Part No.	Description	Quantity
22-796180E	Bipod Base Plate	2
22-796820	Bipod Head	1
22-796602	Bipod Carrying Case	1



### Product Features:

- 60° maximum spread angle with parallel max indication lines
- High strength hinged rotating Anchor Plate
- Bipod Conversion Kit is constructed of lightweight aluminum and stainless steel for strength and durability

## Tripod Kit

Designed to complement the Rescue Support System line, the Tripod kit is manufactured of lightweight aluminum and stainless steel for strength and durability. This kit is designed for use with your rescue struts already used in Trench Rescue, Structural Collapse and Vehicle Stabilization. Attach the Tripod Head to an AcmeThread, LockStroke or LongShore Strut and/or Extension to create a strong, stable support for tripod use as a jack stand and/or high support. A durable carrying case makes transport easy.

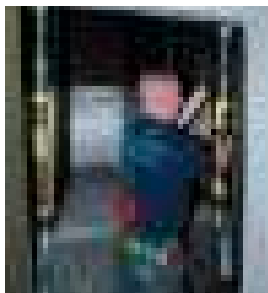
Part No.	Net Weight	
	lb	kg
22-796300	63.0	28,6

Part No.	Description	Quantity
22-796010	Tripod Head	1
22-796150	Hinged Base with Anchor Ring	3
22-796155	30 ft Chain with Grab Hook	1
22-796305	Carrying Case, Tripod	1





## Elevator Support Unit Adapter Kit

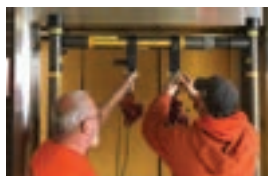


Paratech's Elevator Support Unit (ESU) safely stabilizes an elevator and prevents it from moving. When deployed, the ESU causes zero to minimal damage to elevator cars and affords rescue teams precious time to extricate passengers and save lives. Two unique rescue base and end plates form the core components of this system. An Angled Rubber Base attaches to either Rescue Strut and grips the floor, while the Elevator Support Arm attaches to the top of the Rescue Strut and hooks under the elevator car.

Part No.	Net Weight	
	lb	kg
22-796260	27.2	12,3

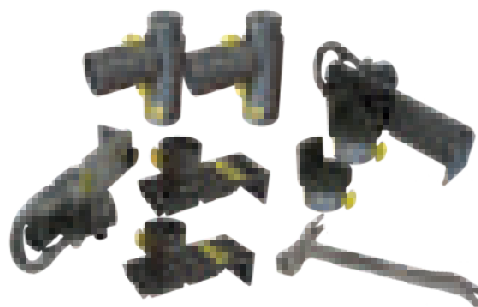
Part No.	Description	Quantity
22-796260L	Elevator Support Left Arm	1
22-796260R	Elevator Support Right Arm	1
22-796266	Angled Rubber Base	6
22-000915	Case, ESU Kit	1

## Elevator Shaft Rescue Kit (ESR)



Elevator Shaft Rescue (ESR) Kit: designed in conjunction with City of Chicago and IFSI (University of Illinois Fire Service Institute) rescue professionals, this kit makes elevator shaft rescue easy and efficient through the creation of a wedged truss bar.

- Fast and easy set up
- Can be set up in doorways, windows, elevator doors, blind shaft elevator hatches, industrial high points, ship board applications, etc.
- Adjustable base for longer door thresholds
- Removable angle on base for window high points
- Rubber foot plate does not mark or damage marble, granite or wooden floors



Part No.	Net Weight	
	lb	kg
22-796890K	41.48	19,44

Part No.	Description	Quantity
22-796266	Angled Rubber Base	2
22-796891	T-Junction	2
22-796905	Adjustable Hinged Base	2
22-796430	Shoring Hammer	1
22-796895	Header Swivel Base	2

\* Struts Not Included in Kit

## Trench Cushion Kit



Designed to tackle one of the biggest challenges in trench collapse rescue, this kit includes the equipment you need to support your shoring panels quickly and safely. With our system you can significantly reduce the time needed to backfill your

shoring panels and maintain a vertical surface for support. Included in the kit are medium pressure cushions, 22-887010K with 3.3T(3,0t) capacity and 22-887015K with 5.1T(4,7t) capacity, that can fill up to a 24 in (61 cm) void. Each cushion is fitted with straps for ease of lowering into the trench and help in positioning the cushions along the sides of the trench wall. Combined with our Paratech Rescue Struts this kit will equip you with the right tools for your next trench rescue.



Part No.	Net Weight	
	lb	kg
22-887070	85.5	38,8

Part No.	Description	Quantity
22-887010K	B/K Cushion 5.1 Ton (4,7 t)	1
22-887015K	C/K Cushion 7.4 Ton (6,7 t)	1
22-887305G3	Dual Controller 14.5 psi / 0.5 bar	1
22-887400	Air Hose 1 in / 25,4 cm dia. x 20 ft / 6,1m Red	1
22-887401	Air Hose 1 in / 25,4 cm dia. x 20 ft / 6,1m Blue	1
22-890513	Air Hose 3/8 in / 9.5 dia. x 16 ft / 5m Black	1

## Solid Sole Rakers & Accessories

Paratech offers the necessary accessories to convert our LongShore Struts into a fully deployable raker system that is fast, strong and easy to install. Paratech's innovative Raker accessories and LongShore Struts meet US&R requirements for strength and deployability. The Paratech LongShore System offers unique features and benefits ensuring proven performance every time the system is deployed.

## Absolute Raker

Paratech once again sets a new standard, no wood, no pins, no chains...no hassle. The Absolute Raker provides flexibility, functionality and economy.

Never worry about wood again—fully deployable in minutes—or easily turn your existing Paratech Raker into an Absolute Raker, with the Standard to Absolute Upgrade Kit . Interoperational with all Paratech Rescue Support Systems, as always.



## Double Absolute Raker Kit

The double absolute raker set can create an 18 ft (5,5m) vertical insertion point double raker, or be recombined to create three separate flying rakers with up to 40 ft (12,2m) of horizontal coverage.

Part No.	Description	Net Weight	
		lb	kg
22-796981	Double Absolute Raker Set	795.3	360,7

Part No.	Description	Quantity
22-796180C	Hinged Base 12 w/ Anchor Ring	6
22-796250	Raker Rail Latch	12
22-796258C	Raker Rail 6	6
22-796280	Raker Rail Junction	2
22-796290	Raker Junction Base	2
22-796330	Clamp and Clevis	24
22-796348	LongShore Adjustable Brace B23	6
22-796350	LongShore Adjustable Brace B57	9
22-796341	LongShore Extension 12 in	2
22-796342	LongShore Extension 24 in	9
22-796360	LongShore Strut 610	6
22-796376	LongShore Extension 67 in	6
22-796469	Raker Rail Splice	4
22-796475	Raker Angle Base	6
22-796689	Latch Holder	3
22-796430	Shoring Hammer	2

## Absolute Raker Kit

Part No.	Description	Net Weight	
		lb	kg
22-796984	Absolute Raker Set	795.3	360,7

Part No.	Description	Quantity
22-796180C	Hinged Base 12 w/ Anchor Ring	2
22-796250	Raker Rail Latch	4
22-796258C	Raker Rail 6	4
22-796280	Raker Rail Junction	2
22-796290	Raker Junction Base	2
22-796330	Clamp and Clevis	12
22-796342	LongShore Extension 24 in	7
22-796350	LongShore Adjustable Brace B57	7
22-796356	LongShore Extension 48 in	2
22-796360	LongShore Strut 610	4
22-796376	LongShore Extension 67 in	2
22-796469	Raker Rail Splice	2
22-796475	Raker Angle Base	2
22-796689	Latch Holder	1





## Absolute Flying Raker

Paratech fully mechanical Absolute Flying Raker Sets leave the wood behind. Stronger, faster and easier than wood, the Absolute Flying Raker in 8 ft (2,4 m) sets, allow rescue teams to build rakers around the rubble pile.

Use the Woodless Flying Raker Kit upgrade to upgrade a Standard Flying Raker to an Absolute Woodless Flying Raker. Interoperational with all Paratech Rescue Support Systems, as always.

### Absolute Flying Raker Kit

Part No.	Description	Net Weight	
		lb	kg
22-796984F	Absolute Flying Raker Set	535.9	243,1

Part No.	Description	Quantity
22-796180C	Hinged Base 12 w/ Anchor Ring	2
22-796258C	Raker Rail 6	2
22-796330	Clamp and Clevis	12
22-796342	LongShore Extension 24 in	4
22-796350	LongShore Adjustable Brace B57	5
22-796348	LongShore Adjustable Brace B23	2
22-796356	LongShore Extension 48 in	2
22-796360	LongShore Strut 610	2
22-796376	LongShore Extension 67 in	2
22-796475	Raker Angle Base	2
22-796689	Latch Holder	1
22-796250	Raker Rail Latch	4

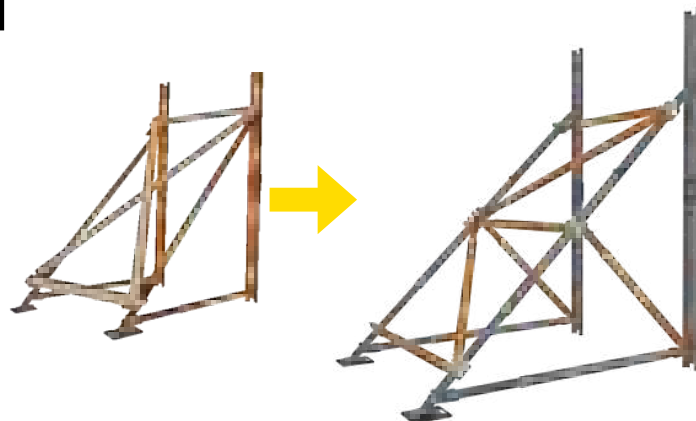


## Standard to Absolute Raker Upgrade Kit

The Standard to Absolute Raker Upgrade Kit changes your Standard Raker into an Absolute Raker. It removes the need for wood bracing and replaces it with high strength fully mechanical cross-bracing and midpoint braces.

Part No.	Description	Net Weight	
		lb	kg
22-796983	Standard Raker to Absolute Raker Upgrade	354.3	160,7

Part No.	Description	Quantity
22-796280	Rail Junction	2
22-796330	Clamp and Clevis	12
22-796342	LongShore Extension 24 in	5
22-796350	LongShore Adjustable Brace B57	7

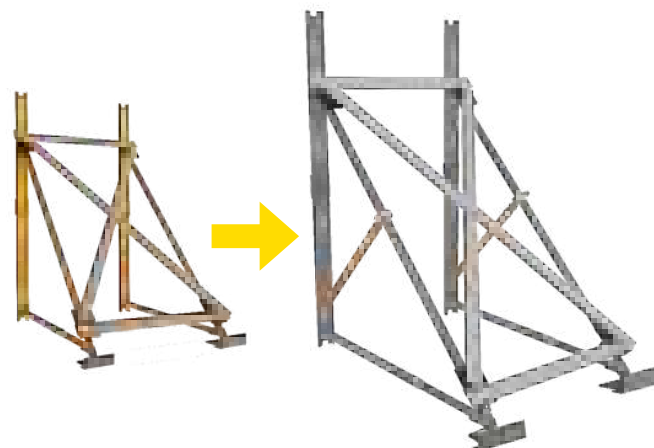


## Raker Midpoint Brace Kit

The Raker Midpoint Brace Kit can be utilized with the Raker Sets and will greatly increase the strength of your Raker Kit. Adding this item to your Raker Set will guarantee you have the strongest raker.

Part No.	Description	Net Weight	
		lb	kg
22-796484	Raker Midpoint Brace Kit	97.6	44,3

Part No.	Description	Quantity
22-796350	Adjustable Brace Model B57	2
22-796280	Raker Rail Junction	2
22-796330	Clamp & Clevis	2

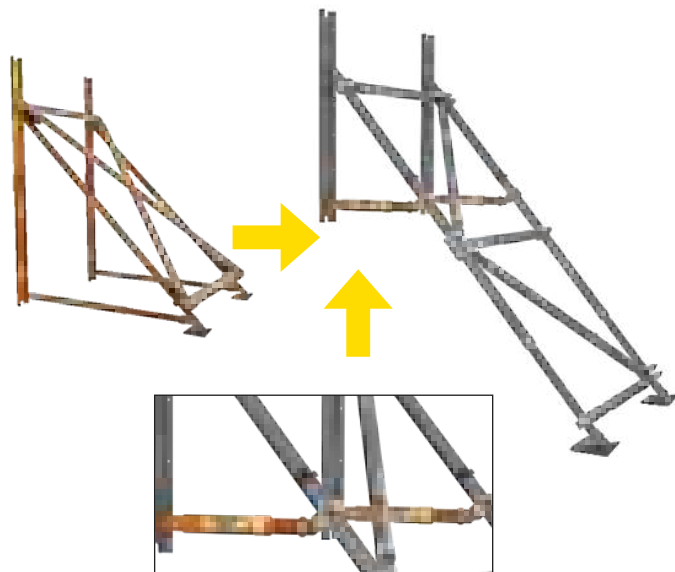


## Flying Raker Kit

Add this kit to your Standard Raker Kit to turn it into a Flying Raker.

Part No.	Description	Net Weight	
		lb	kg
22-796486	Flying Raker Kit	97.6	44,3

Part No.	Description	Quantity
22-796348	Adjustable Brace Model B23	2
22-796250	Raker Rail Latch	2
22-796330	Clamp & Clevis	2





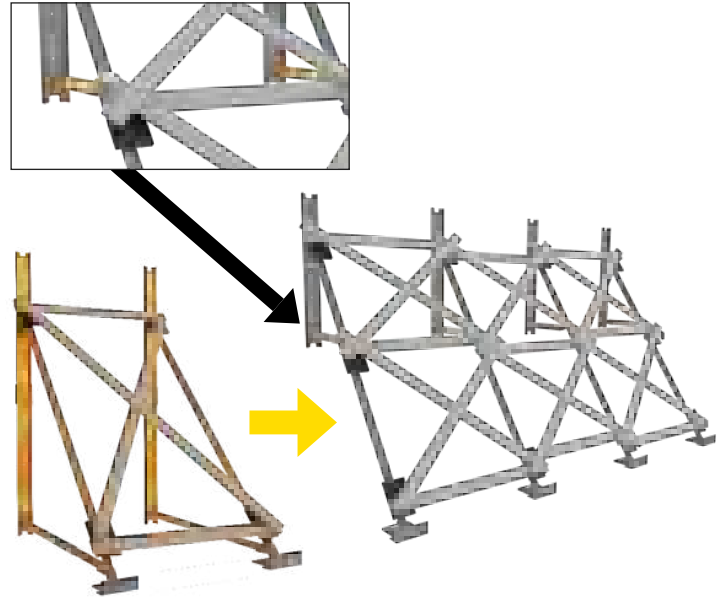
## Raker Expansion Kit

Increase your Raker Set capacity by adding this additional cache of equipment and increase your wall support capacity from 8' to 24' / 20.32 to 60.96 cm.

Part No.	Description	Net Weight	
		lb	kg
22-796485	Raker Expansion Kit	143.8	65,2

Part No.	Description	Quantity
22-796180C	Hinged Base Plate 12 w/ Anchor Ring 12 in / 30,5 cm	2
22-796475	Raker Angle Base	2
22-796310	Nailing Pad with Clamp	6
22-796348	Adjustable Brace Model B23	4
22-796250	Raker Rail Latch	4
22-796330	Clamp & Clevis	4



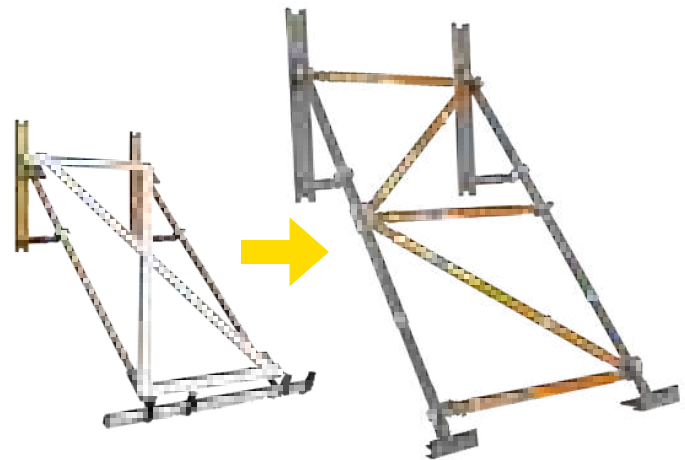
## Woodless Flying Raker Brace Kit

Use this kit to upgrade your Flying Raker to an Absolute Flying Raker

Part No.	Description	Net Weight	
		lb	kg
22-796487	Woodless Flying Raker Brace Kit Absolute Raker Upgrade	231.9	105,2

Part No.	Description	Quantity
22-796330	Clamp and Clevis	10
22-796342	LongShore Extension 24 in	2
22-796350	LongShore Adjustable Brace B57	5



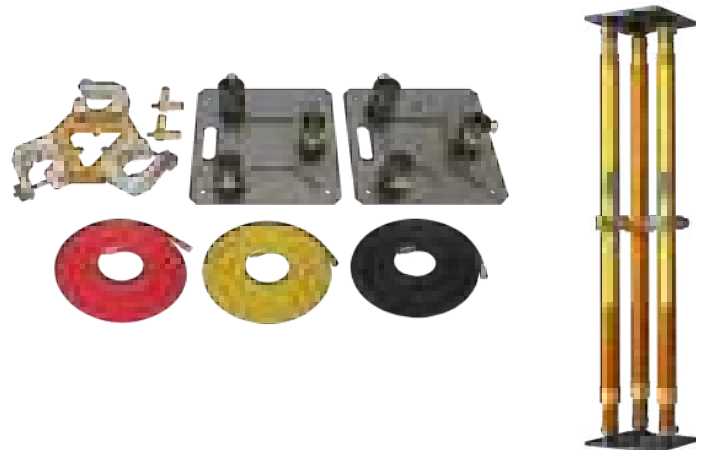
## High Strength Structural Kit

The Paratech High Strength Structural Kit is designed to cope with the heaviest loads seen in USAR. The HSSK combines 3 heavy duty LongShore shoring struts, the strongest shores Paratech produces, and combines them into a single shoring configuration using a simple and easy to install hand tightened tri-brace. The tri-brace ties the shores together and provides rescuers 3X the load rating listed shoring capacity of the tabulated data on the LongShore strut at a given length. The HSSK can be used to shore the extremely heavy loads at length such as replacing damaged columns in a compromised structure.

Part No.	Description	Net Weight	
		lb	kg
22-796HSSK	High Strength Structural Kit	73	33,1

Part No.	Description	Quantity
22-796395	Strut Distributor Module	2
22-796399	Tri-Brace	1



Part No.	Description	Quantity
22-796680	Tri-Base	2
22-890520	32 ft Hose, Yellow w/ Couplings	1
22-890521	32 ft Hose, Red w/ Couplings	1
22-890522	32 ft Hose, Black w/ Couplings	1

## Basic 12 Shore Trench Kit

This kit gives the rescuer the ability to construct up to 12 shores for use in a Trench Rescue. With the available air controls and vibrant colored hoses, this is a great starter trench kit.

Part No.	Description	Net Weight	
		lb	kg
22-796860	US	374.6	169,9
22-796860D	Metric	231.9	105,2

Part No.	Description	Quantity
22-796200	AcmeThread Strut 25-36 in / 64-91 cm	4
22-796202	AcmeThread Strut 37-58 in / 94-147 cm	8
22-796012	Strut Extension 12 in / 30 cm	2
22-796024	Strut Extension 24 in / 61 cm	4
22-796060	Square Swivel Base 6 in / 15.2 cm	18
22-796070	Square Rigid Base 6 in / 15.2 cm	6
22-796103G3	Dual Deadman Strut Controller G3 250 psi / 17.2 bar	1
22-895400G3	Strut Regulator G3 CGA / DIN	1
22-890515	Air Hose 3/8 in / 9.5 mm dia. x 16 ft / 5 m Yellow	2
22-890520	Air Hose 3/8 in / 9.5 mm dia. x 32 ft / 10 m Yellow	2
22-890516	Air Hose 3/8 in / 9.5 mm dia. x 16 ft / 5 m Red	2
22-890521	Air Hose 3/8 in / 9.5 mm dia. x 32 ft / 10 m Red	2



**1 - Dual Deadman Strut Controller G3**  
250 psi / 17,2 bar  
22-796103G3



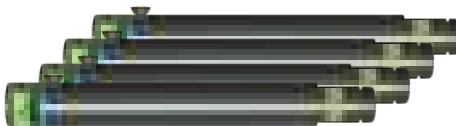
**4 - Shoring Hammer**  
22-796430



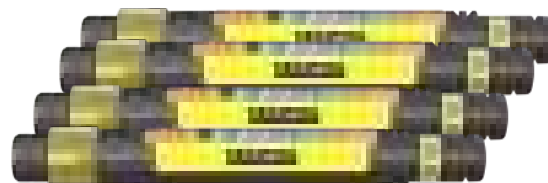
**1 - Strut Regulator G3**  
5,500-300 psi / 379.2-20,7 bar  
22-895400G3



**2 - Strut Extension 12 in / 30 cm** 22-796012



**4 - Strut Extension 24 in / 61 cm** 22-796024



**4 - AcmeThread Struts 25-36 in / 64-91 cm** 22-796200



**8 - AcmeThread Struts 37-58 in / 94-147 cm** 22-796202



**6 - Square Rigid Base 6 in / 15,2 cm** 22-796070



**18 - Square Swivel Base 6 in / 15,2 cm** 22-796060



**2 - Air Hose**  
3/8 in / 9.5 mm dia. x  
16 ft / 5 m Yellow  
22-890515



**2 - Air Hose**  
3/8 in / 9.5 mm dia. x  
32 ft / 10 m Yellow  
22-890520



**2 - Air Hose**  
3/8 in / 9.5 mm dia. x  
16 ft / 5 m Red  
22-890516



**2 - Air Hose**  
3/8 in / 9.5 mm dia. x  
32 ft / 10 m Red  
22-890521



## 16 Shore Trench Kit

This kit gives the rescuer the ability to construct up to 16 shores for use in a Trench Rescue. With the available Trench Cushions to fill void spaces and the air controls & vibrant colored hoses, this is a great kit for your Trench Rescue needs.

Part No.	Description	Net Weight	
		lb	kg
22-796862	US	445.8	202,2
22-796862D	Metric	446.7	202,6

Part No.	Description	Quantity
22-796212	AcmeThread Strut 12-15 in / 31-38 cm	2
22-796206	AcmeThread Strut 19-25 in / 48-64 cm	6
22-796200	AcmeThread Strut 25-36 in / 64-91 cm	4
22-796202	AcmeThread Strut 37-58 in / 94-147 cm	2
22-796000	LockStroke Strut 25-36 / 64-91 cm	2
22-796017	Strut Extension 6 in / 15 cm	4
22-796012	Strut Extension 12 in / 30 cm	6
22-796024	Strut Extension 24 in / 61 cm	6
22-796103G3	Dual Deadman Strut Controller G3 250 psi / 17,2 bar	1
22-895400G3	Strut Regulator G3 5,500-300 psi / 379.2-20,7 bar	1
22-890520	Air Hose 3/8 in / 9,5 mm dia. x 32 ft / 10 m Yellow	2
22-890521	Air Hose 3/8 in / 9,5 mm dia. x 32 ft / 10 m Red	2
22-890513	Air Hose 3/8 in / 9,5 mm dia. x 16 ft / 5 m Black	1
22-796395	Strut Distributor Module (2 coupling, 1 nipple)	4
22-796060	Square Swivel Base 6 in / 15,2 cm	24
22-796070	Square Rigid Base 6 in / 15,2 cm	8
22-796430	Shoring Hammer	4
22-887070	Trench Cushion Kit (qty. 1 kit below)	1
22-887010K	B/K Cushion 5.1 Ton (4,7 t)	1
22-887015K	C/K Cushion 7.4 Ton (6,7 t)	1
22-887305G3	Dual Controller 14.5 psi / 0.5 bar	1
22-887400	Air Hose 1 in / 25.4 mm dia. x 20 ft / 6.1 m Red	1
22-890401	Air Hose 1 in / 25.4 mm dia. x 20 ft / 6.1 m Blue	1
22-890513	Air Hose 3/8 in / 9.5 mm dia. x 16 ft / 5 m Black	1
22-890730	Double Male Nipple	1

**1 - Dual Deadman  
Strut Controller G3  
250 psi / 17.2 bar  
22-796103G3**

**4 - Shoring  
Hammer  
22-796430**

**1 - Strut  
Regulator G3  
5,500-300 psi /  
379.2-20.7 bar  
22-895400G3**

**1 - B/K Cushion  
5.1 Ton (4,7 t)  
22-887010K**

**1 - C/K Cushion  
7.4 Ton (6,7 t)  
22-887015K**

**Trench Cushion  
Controller 7.25  
psi / 0.5 Bar  
22-887305G3**



**4 - Strut Extension 6 in / 15 cm 22-796017**



**6 - Strut Extension 12 in / 30 cm 22-796012**



**6 - Strut Extension 24 in / 61 cm 22-796024**



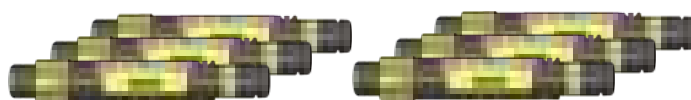
**2 - LockStroke Struts 25-36 in / 64-91 cm 22-796000**



**2 - AcmeThread Struts 37-58 in / 94-147 cm 22-796202**



**4 - AcmeThread Struts 25-36 in / 64-91 cm 22-796200**



**6 - AcmeThread Struts 19-25 in / 48-64 cm 22-796206**



**2 - AcmeThread Struts 12-15 in / 31-38 cm 22-796212**



**8 - Square Rigid Base 6 in / 15.2 cm 22-796070**



**24 - Square Swivel Base 6 in / 15.2 cm 22-796060**



**4 - Strut Distributor Module (2 couplings, 1 nipple) 22-796395**



**1 - Air Hose  
3/8 in / 9.5 mm  
dia. x 16 ft / 5 m  
Black 22-890513**



**2 - Air Hose  
3/8 in / 9.5 mm  
dia. x 32 ft / 10 m  
Yellow 22-890520**



**2 - Air Hose  
3/8 in / 9.5 mm dia.  
x 32 ft / 10 m  
Red 22-890521**



**1 - Air Hose  
1 in / 25.4 mm dia.  
x 20 ft / 6.1 m  
Red 22-887400**



**1 - Air Hose  
1 in / 25.4 mm dia.  
x 20 ft / 6.1 m  
Blue 22-887401**



**1 - Air Hose  
3/8 in / 9.5 mm dia.  
x 16 ft / 5 m  
Black 22-890513**



# Rescue Support Systems

## Light US&R Rescue Strut System

This system affords the rescuer the ability to tackle most Structural Collapse Rescues.

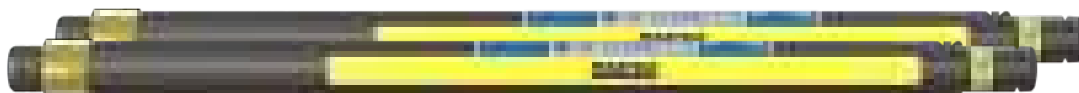
The system includes (1) Raker Set and numerous Rescue Struts and components which would be a great start to any Fire Department looking to be more involved in structural collapse incidents.

Part No.	Description	Net Weight	
		lb	kg
22-796901	US	740.1	335,7
22-796901M	Metric	740.1	335,7

Part No.	Description	Quantity
22-796212	AcmeThread Strut 12-15 in / 31-38 cm	2
22-796206	AcmeThread Strut 19-25 in / 48-64 cm	2
22-796200	AcmeThread Strut 25-36 in / 64-91 cm	2
22-796202	AcmeThread Strut 37-58 in / 94-147 cm	2
22-796204	AcmeThread Strut 56-88 in / 142-224 cm	2
22-796360	LongShore Strut 610, 72-116 in / 183-295 cm	2
22-796017	Strut Extension 6 in / 15 cm	2
22-796012	Strut Extension 12 in / 30 cm	2
22-796024	Strut Extension 24 in / 61 cm	2
22-796036	Strut Extension 36 in / 91 cm	2
22-796060	Swivel Base 6 in / 15,2 cm	15
22-796070	Rigid Base 6 in / 15,2 cm	15
22-796103G3	Dual Deadman Strut Controller G2 250 psi / 17,2 bar	1
22-895400G3	Strut Regulator G3 CGA	1
22-796RG1-2K	Rescue Guardian Kit	1
22-890520	Air Hose 3/8 in / 9.5 mm dia. x 32 ft / 10 m Yellow	1
22-890521	Air Hose 3/8 in / 9.5 mm dia. x 32 ft / 10 m Red	1
22-890522	Air Hose 3/8 in / 9.5 mm dia. x 32 ft / 10 m Black	1
22-796430	Shoring Hammer	4
<b>22-796984</b>	<b>Absolute Raker Set (qty. 1 kit below)</b>	<b>1</b>
22-796180C	Hinged Base 12 w/ Anchor Ring	2
22-796250	Raker Rail Latch	4
22-796258C	Raker Rail 6	4
22-796280	Raker Rail Junction	2
22-796290	Raker Junction Base	2
22-796330	Clamp and Clevis	12
22-796342	LongShore Extension 24 in	7
22-796350	LongShore Adjustable Brace B57	7
22-796356	LongShore Extension 48 in	2
22-796360	LongShore Strut 610	4
22-796376	LongShore Extension 67 in	2
22-796469	Raker Rail Splice	2
22-796475	Raker Angle Base	2
22-796689	Latch Holder	1



**2 - LongShore 610 Struts 72-116 in / 183-295 cm 22-796360**



**2 - AcmeThread Struts 56-88 in / 142-224 cm 22-796204**



**2 - Strut Extension 6 in / 15 cm 22-796017**



**2 - Strut Extension 12 in / 30 cm 22-796012**



**2 - AcmeThread Struts 12-15 in / 31-38 cm 22-796212**



**2 - AcmeThread Struts 19-25 in / 48-64 cm 22-796206**



**2 - AcmeThread Struts 25-36 in / 64-91 cm 22-796200**



**2 - AcmeThread Struts 37-58 in / 94-147 cm 22-796202**



**1 - Air Hose  
3/8 in / 9.5 mm dia.  
x 32 ft / 10 m Red  
22-890521**



**1 - Air Hose  
3/8 in / 9.5 mm dia.  
x 32 ft / 10 m Black  
22-890522**



**1 - Air Hose  
3/8 in / 9.5 mm dia.  
x 32 ft / 10 m Yellow  
22-890520**



**1 - Dual Deadman  
Strut  
Controller G3  
250 psi / 17,2 bar  
22-796103G3**



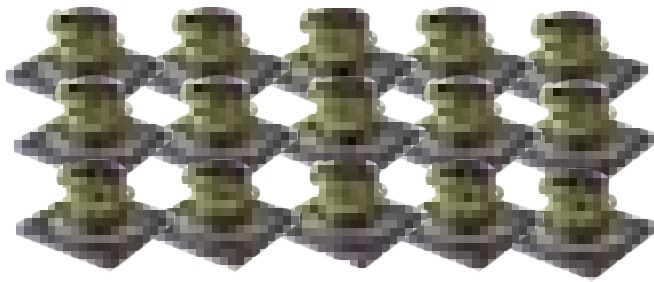
**4 - Shoring  
Hammers  
22-796430**



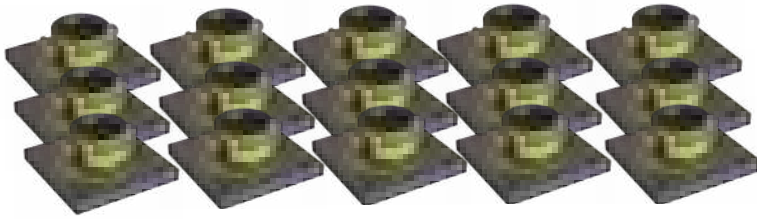
**1 - Strut  
Regulator G3  
5,500-300 psi /  
379.2-20,7 bar  
22-895400G3**



**1 - Rescue Guardian 2 Kit 22-796RG1-2K**



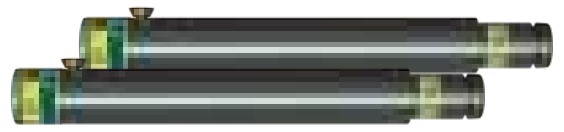
15 - Square Swivel Base 6 in / 15,2 cm 22-796060



15 - Square Rigid Base 6 in / 15,2 cm 22-796070



2 - Strut Extension 36 in / 91 cm 22-796036



2 - Strut Extension 24 in / 61 cm 22-796024

## 22-796984 Absolute Raker Set



7 - LongShore Extension 24 in / 61 cm 22-796342



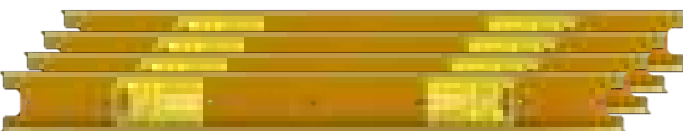
2 - LongShore Extension 48 in / 122 cm 22-796356



2 - LongShore Extension 67 in / 170 cm 22-796376



4 - LongShore Strut 610 72-116 in / 183-295 cm 22-796360



4 - Raker Rail 6 72 in / 183 cm 22-796258C



2 - Raker Rail Junction  
22-796280



2 - Raker Junction Base  
22-796290



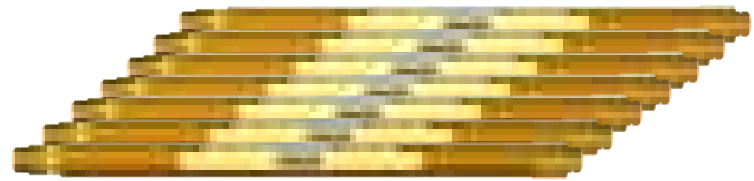
2 - Raker Angle Base  
22-796475



1 - Latch Holder  
22-796689



4 - Raker Rail Latch 22-796250



7 - LongShore Adjustable Brace B57 60-85 in / 152-216 cm 22-796350



12 - Clamp and Clevis  
22-796330



2 - Hinged Base Plate 12 in / 30,5 cm  
22-796180C



2 - Raker Rail Splice  
22-796469

# Rescue Support Systems

## US&R Rescue Strut System

The US&R Rescue Strut System is the most complete structural collapse systems that has been standardized by the FEMA US&R teams. For any team serious about Urban Search & Rescue, this is the system to make it happen. The system includes (2) 6' Raker Sets and numerous Rescue Struts and components to handle almost any disaster that the rescuers are faced with.

Part No.	Description	Net Weight	
		lb	kg
22-796900	US	1713.6	777,3
22-796900M	Metric	1713.6	777,3

Part No.	Description	Quantity
22-796212	AcmeThread Strut 12-15 in / 31-38 cm	4
22-796206	AcmeThread Strut 19-25 in / 48-64 cm	4
22-796200	AcmeThread Strut 25-36 in / 64-91 cm	4
22-796202	AcmeThread Strut 37-58 in / 94-147 cm	4
22-796204	AcmeThread Strut 56-88 in / 142-224 cm	4
22-796360	LongShore Strut 610, 72-116 in / 183-295 cm	4
22-796017	Strut Extension 6 in / 15 cm	4
22-796012	Strut Extension 12 in / 30 cm	4
22-796024	Strut Extension 24 in / 61 cm	4
22-796036	Strut Extension 36 in / 91 cm	4
22-796060	Swivel Base 6 in / 15.2 cm	30
22-796070	Rigid Base 6 in / 15.2 cm	30
22-796103G3	Dual Deadman Strut Controller G3 250 psi / 17,2 bar	2
22-895400G3	Strut Regulator G3 CGA / DIN	2
22-796RG1-2K	Rescue Guardian Kit	2
22-890520	Air Hose 3/8 in / 9,5 mm dia. x 32 ft / 10 m Yellow	2
22-890521	Air Hose 3/8 in / 9,5 mm dia. x 32 ft / 10 m Red	2
22-890522	Air Hose 3/8 in / 9,5 mm dia. x 32 ft / 10 m Black	2
22-796430	Shoring Hammer	8
<b>22-796984</b>	<b>Absolute Raker Set (qty. 2 kit below)</b>	<b>1</b>
22-796180C	Hinged Base 12 w/ Anchor Ring	2
22-796250	Raker Rail Latch	4
22-796258C	Raker Rail 6	4
22-796280	Raker Rail Junction	2
22-796290	Raker Junction Base	2
22-796330	Clamp and Clevis	12
22-796342	LongShore Extension 24 in	7
22-796350	LongShore Adjustable Brace B57	7
22-796356	LongShore Extension 48 in	2
22-796360	LongShore Strut 610	4
22-796376	LongShore Extension 67 in	2
22-796469	Raker Rail Splice	2
22-796475	Raker Angle Base	2
22-796689	Latch Holder	1



4 - LongShore 610 Struts 72-116 in / 183-295 cm 22-796360



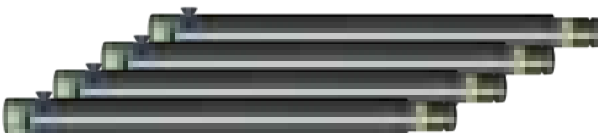
4 - AcmeThread Struts 56-88 in / 142-223 cm 22-796204



4 - AcmeThread Struts 37-58 in / 94-147 cm 22-796202



4 - AcmeThread Struts 25-36 in / 64-91 cm 22-796200



4 - Strut Extension 36 in / 91 cm 22-796036



4 - Strut Extension 6 in / 15 cm 22-796017



4 - Strut Extension 12 in / 30 cm 22-796012



4 - AcmeThread Struts 12-15 in / 31-38 cm 22-796212

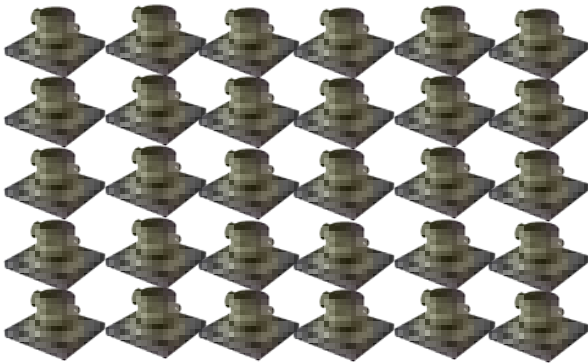


4 - AcmeThread Struts 19-25 in / 48-64 cm 22-796206



4 - Strut Extension 24 in / 61 cm 22-796024





30 - Square Swivel Base 6 in / 15.2 cm 22-796060



30 - Square Rigid Base 6 in / 15.2 cm 22-796070



2 - Dual Deadman  
Strut  
Controller G3  
250 psi / 17,2 bar  
22-796103G3

8 - Shoring  
Hammers  
22-796430

2 - Strut  
Regulator G3  
5,500-300 psi /  
379.2-20,7 bar  
22-895400G3



2 - Air Hose  
3/8 in / 9.5 mm dia.  
x 32 ft / 10 m Red  
22-890521



2 - Air Hose  
3/8 in / 9.5 mm dia.  
x 32 ft / 10 m Black  
22-890522



2 - Air Hose  
3/8 in / 9.5 mm dia.  
x 32 ft / 10 m Yellow  
22-890520



2 - Rescue Guardian 2 Kit 22-796RG1-2K

## 22-796984 Absolute Raker Set

The US&R Rescue Strut System includes **TWO COMPLETE** Absolute Raker Sets (shown below)



7 - LongShore Extension 24 in / 61 cm 22-796342



2 - LongShore Extension 48 in / 122 cm 22-796356



2 - LongShore Extension 67 in / 170 cm 22-796376



4 - LongShore Strut 610 72-116 in / 183-295 cm 22-796360



4 - Raker Rail 6 72 in / 183 cm 22-796258C



2 - Raker Rail  
Junction  
22-796280

2 - Raker  
Junction Base  
22-796290

2 - Raker  
Angle Base  
22-796475

1 - Latch  
Holder  
22-796689



4 - Raker Rail Latch 22-796250



7 - LongShore Adjustable Brace B57 60-85 in / 152-216 cm 22-796350



12 - Clamp  
and Clevis  
22-796330



2 - Hinged Base  
Plate 12 in / 30,5 cm  
22-796180C



2 - Raker Rail Splice  
22-796469

# Vehicle Stabilization Kits

## Vehicle Stabilization Kit

Paratech Vehicle Stabilization Kits have the strength and flexibility to handle any size vehicle anytime, anywhere. This includes sub compact cars, buses, cement trucks and even train locomotives. Additionally, these components provide the extra value of being completely interchangeable with your other Paratech equipment for building collapse and trench rescue scenarios. They are strong, sturdy and reliable. Paratech systems are the easiest to use and the strongest VSKs.

### VSK Comparison

	Supporter	Standard	Highway	Interstate
Max Load	10,000lb / 4.5T / 4,536 kg	40,000lb / 18T / 18,144 kg	80,000lb / 36T / 36,287 kg	120,000lb / 54T / 54,531 kg
# of AcmeThread Struts	0	2	4	0
# of LongShore Struts	0	0	0	6
# of Extensions	1	4	6	6
# of Bases	1	4	8	18
# of Ratchet Belts	1 (Attached)	4	4	6

With the highest industry safety standard, Paratech's VSK can hold 10,000lb / 4.5TONS / 4.536 kg up to 120,000lb / 54.TONS / 54,531 kg. Paratech vehicle stabilization kits have the strength & flexibility to handle any size vehicle anytime.



### VSK V2 Controller

Safely use compressed air to extend struts! This innovative controller is capable of extending the heaviest combination of struts and extensions with a simple on / off control. Its low 29 PSI / 2 Bar pressure reduction and unique automatic vent relief feature, eliminates the risk of over pressurizing in the event of a load shift, ensuring a secure and steady strut extension. Ideal for safely chasing stabilization struts while performing a lift.



Net Weight: 2.4 lbs; 1,0 kg  
Part No. 22-796V02

#### Double Male Nipple



Part No. 22-890730-180

Plug Tether  
Part No. 22-890717  
Coupling Plug



Part No. 22-890715



## Supporter X2- All-In-One Vehicle Stabilizer

### The 'ALL IN ONE' Vehicle Stabilizer!

#### Stronger, Faster, Safer!

When you need to stabilize a vehicle accident scene quickly, there is nothing faster or stronger. With the TwistLock Collar all you need to do is TWIST, EXTEND, LOCK and the SUPPORTER can stabilize 10,000 lb / 4,536 kg with a 2:1 safety factor at ANY height.

**Maximum load up to 10,000 lb / 4.536 kg with a 2:1 safety factor**

- Easy Extra Extension Ability
- Weight: 35.0 lb / 15,9 kg
- Collapsed, Base on Ground 40 in / 101,6 cm
- Extended, Base on Ground 65.4 in / 166,1 cm
- Extended with Extension 95.4 in / 242,3 cm

Part No.	Description	Net Weight	
		lb	kg
22-797E12E	SUPPORTER X2	37.3	16,9
22-797E12E-AR	SUPPORTER X2/W Anchor Ring	39.3	17,9



**Spike Base Positive Grip Shackle**  
Hole Angle Indicator Replaceable  
Spikes Integrated V & Cone Base

**Quick Super Extension to 95.4 in / 242,3 cm**



**Quick Extension To 70.0 in / 177,8 cm**

**Twist-Lock Collar**

**Auto-Rewind Belt**

**Integrated Ratchet Belt**

**90° Base Folds Flat For Easy Storage**



# Vehicle Stabilization Kits

## VSK Base Kits

Bases integrated with Ratchet Belt and Anchor Ring, ready for rapid deployment, making vehicle stabilization quicker & easier.

### Product Features:

- Fast and easy to deploy
- Available with small or large size base foot
- Integrated Anchor Ring for multiple Ratchet Belt usage
- Built in ratchet keeps hot zone free of tripping hazard from unused belt
- Compatible with all of Paratech's Acmethread and Lockstroke Rescue Support System components

Part No.	Description	Net Weight	
		lb	kg
22-796303	VSK Base 6 Kit	25.9	11,7

Part No.	Description	Quantity
22-796331	VSK Base 6	1
22-797042E	Adjustable Carrying Handle	1
22-796161	Tie-Down Keys w / J Hook	1

Part No.	Description	Net Weight	
		lb	kg
22-796309	VSK Base Kit 12	30.9	14,0

Part No.	Description	Quantity
22-796308	VSK Base 12	1
22-797042E	Adjustable Carrying Handle	1
22-796161	Tie-Down Keys w / J Hook	1

### VSK BASE KIT 6

- 1 - Adjustable Carrying Handle  
22-797042E

- 1 - Tie Down Keys with J Hook  
22-796161

### VSK BASE KIT 12

- 1 - Adjustable Carrying Handle  
22-797042E

- 1 - Tie Down Keys with J Hook  
22-796161



## Standard VSK

Paratech's flagship kit and the "standard" when addressing your stabilization needs. This kit covers everything from small vehicles to large commercial/municipal vehicles.

**Max. load up to 40,000 lb / 18,144 kg with a 4:1 safety factor**

Part No.	Description	Net Weight	
		lb	kg
22-796850	Standard VSK	97.3	114,2

Part No.	Description	Quantity
22-796200	Acme Thread Strut 25-36 in / 64-91 cm	2
22-796012	Strut Extension 12 in / 30 cm	2
22-796024	Strut Extension 24 in / 61 cm	2
22-796025	Multi-Base	2
22-796180C	Hinged Base w/Anchor Ring 12 in / 30 cm	2
22-890553	Ratchet Belt w/Finger Hook 27 ft / 8.2 m	4
22-796161	Tie Down Keys w / J Hook	2

- 2 - Strut Extensions 12 in / 30 cm 22-796012

- 2 - Strut Extension 24 in / 61 cm 22-796024

- 2 - AcmeThread Struts 25-36 in / 64-91 cm 22-796200

- 4 - Ratchet Belt with Finger Hook 27 ft / 8.2 m 22-890553

- 2 - Multi-Base 22-796025 2 - Hinged Base with Anchor Ring 12 in / 30 cm 22-796180C

- 2 - Tie Down Keys with J Hook 22-796161



## Heavy Vehicle Extrication Kit

The most comprehensive heavy lifting kit available, utilizing the strength of HydraFusion Struts, lifting height and power of the MULTIFORCE and the Rapid Extrication Kit PLUS much more. With this Kit you can lift and stabilize any size vehicle on the road.



- Stabilize everything from small vehicles, large commercial / municipal vehicles, and fully loaded tractor trailers to trains
- Ease of use: no pins, no cables
- Extremely safe and secure: Paratech Struts always default to locked position
- Consistency and organized placement of components after use

Part No.	Description	Net Weight	
		lb	kg
22-88HVENCK	Heavy Vehicle Extrication Kit	1,259.1	571,1
22-88HVENCKD	Heavy Vehicle Extrication Kit DIN	1,259.1	571,1

Part No.	Description	Quantity
22-79HA10K	HydraFusion 10 Kit	2
22-796180C	Hinged Base Plate w/ Anchor Ring 12 in / 30 cm	6
22-88DREK	Rapid Extrication Kit	1
22-796720	LongShore Strut 304 36-50 in / 91-127 cm	2
22-796730	LongShore Strut 406 48-73 in / 122-185 cm	2
22-796360	LongShore Strut 610 72-116 in / 183-295 cm	2
22-796342	LongShore Extension 24 in / 61 cm	2
22-796356	LongShore Extension 48 in / 122 cm	2
22-796376	LongShore Extension 67 in / 170 cm	2
22-000680	SPF Hooligan	1
22-796090	V Base	4
22-796270	Contour Base	4
22-796025	Multi-Base	4
22-890015	Non Slip Neoprene Pad	2
22-796P14	Double Headed Picket 40 in / 106cm	4
22-796C1H	Chain 20 ft / 6.1 m x 3/8 in, grade 100	2
22-890553	Ratchet Belt w/Finger Hook 27 ft / 8,2 m	6
22-796161	Tie Down Keys w /J Hook	4
22-796979	Chain Binder	2
22-796V02	VSK Controller	1

## Rapid Extrication Kit

Combining the speed of Paratech's MULTIFORCE Air Lifting Bag with the flexibility of our Standard VSK, the Rapid Extrication Kit gets vehicles lifted and stabilized quicker than any other.

Part No.	Description	Net Weight	
		lb	kg
22-88DREK	Rapid Extrication Kit	190.2	86,3
22-88DREKD	Rapid Extrication Kit DIN	190.2	86,3

Part No.	Description	Quantity
22-88D025G3K	Remote Placement G3 MULTIFORCE Bag Kit	1
22-796200	AcmeThread Strut 25-36 in / 64-91 cm	2
22-796012	Strut Extension 12 in / 30 cm	2
22-796024	Strut Extension 24 in / 61 cm	2
22-796025	Multi-Base	2
22-796180C	Hinged Base 12 w/Anchor Ring	2
22-890553	Ratchet Belt 27' WLL 3300 lbs	4
22-796161	Tie Down Keys w /J Hook	2



# Vehicle Stabilization Kits

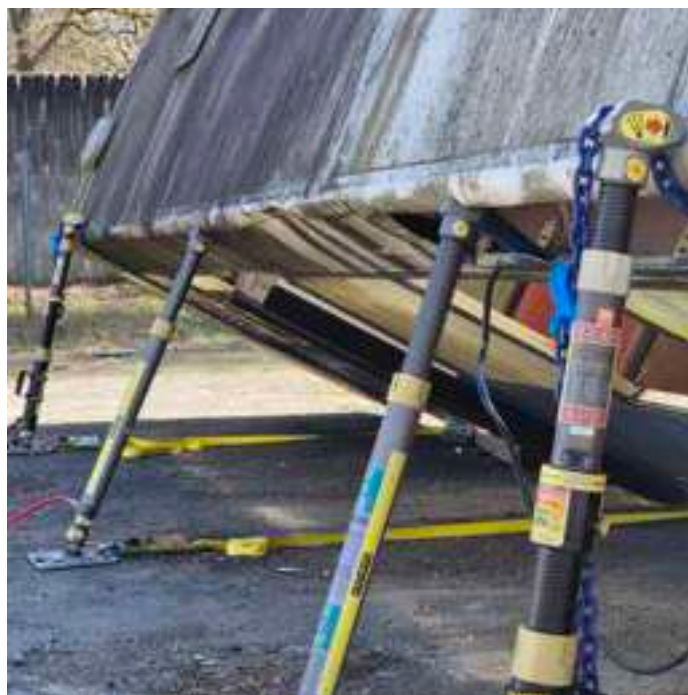
## Highway VSK

Doubling the capacity of the Standard VSK, this kit is designed for multiple vehicles, longer reach and heavier weights such as a fully loaded tractor trailer.

**Max. load up to 80,000 lb / 36,287 kg with a 4:1 safety factor**

Part No.	Description	Net Weight	
		lb	kg
22-796852	Highway VSK	167.5	76,0

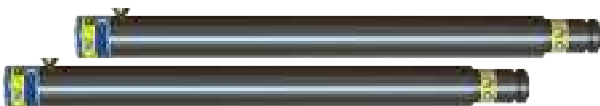
Part No.	Description	Quantity
22-796200	AcmeThread Strut 25-36 in / 64-91 cm	2
22-796202	AcmeThread Strut 37-58 in / 94-147 cm	2
22-796012	Strut Extension 12 in / 30 cm	2
22-796024	Strut Extension 24 in / 61 cm	2
22-796036	Strut Extension 36 in / 91 cm	2
22-796025	Multi-Base	4
22-796180C	Hinged Base w /Anchor Ring 12 in / 30 cm	4
22-890553	Ratchet Belt w /Finger Hook 27 ft / 8,2 m	4
22-796161	Tie Down Keys w /J Hook	4



2 - Strut Extensions 12 in / 30 cm 22-796012



2 - Strut Extensions 24 in / 61 cm 22-796024



2 - Strut Extensions 36 in / 91 cm 22-796036



2 - AcmeThread Struts 25-36 in / 64-91 cm 22-796200



2 - AcmeThread Struts 37-58 in / 94-147 cm 22-796202



4 - Ratchet Belt with Finger Hook 27 ft / 8,2 m 22-890553



4 - Multi-Base 22-796025



4 - Hinged Base with Anchor Ring 12 in / 30 cm 22-796180C



4 - Tie Down Keys with J Hook 22-796161



## Interstate/Motorway VSK

The ultimate vehicle stabilization kit. There is no vehicle on the road, runway or track that this kit cannot stabilize. When your vehicular rescue needs the strongest system available, look no further.

**Maximum load up to 120,000 lb / 54.431 kg with a 4:1 safety factor**

Part No.	Description	Net Weight	
		lb	kg
22-796855	Interstate/Motorway VSK	438.2	198,0

Part No.	Description	Quantity
22-796720	LongShore Strut 304 36-50 in / 91-127 cm	2
22-796730	LongShore Strut 406 48-73 in / 122-185 cm	2
22-796360	LongShore Strut 610 72-116 in / 183-295 cm	2
22-796342	LongShore Extension 24 in / 61 cm	3
22-796356	LongShore Extension 48 in / 122 cm	3
22-796090	V Base	4
22-796270	Contour Base	4
22-796025	Multi-Base	4
22-796180C	Hinged Base Plate w/ Anchor Ring 12 in / 30 cm	6
22-796C1H	Chain 20 ft / 6.1 m x 3/8 in, grade 100	2
22-890553	Ratchet Belt w/Finger Hook 27 ft / 8,2 m	6
22-796161	Tie Down Keys w/J Hook	4
22-890015	Non Slip Neoprene Pad	2



**3 - LongShore Extension 24 in / 61 cm 22-796342**



**3 - LongShore Extension 48 in / 122 cm 22-796356**



**2 - LongShore Strut 304 36-50 in / 91-127 cm 22-796720**



**2 - LongShore Strut 406 48-73 in / 119-185 cm 22-796730**



**2 - LongShore Strut 610 72-116 in / 183-295 cm 22-796360**



**6 - Hinged Base with Anchor Ring 12 in / 30 cm 22-796180C**



**2 - Chain 20 ft / 6.1 m x 3/8 in, grade 100 22-796C1H**

**2 - Non Slip Neoprene Pad 22-890015**



**4 - Tie Down Keys with J Hook 22-796161**



**6 - Ratchet Belt with Finger Hook 27 ft / 8,2 m 22-890553**



**4 - Contour Base 22-796270**



**4 - V Base 22-796090**



**4 - Multi-Base 22-796025**

# MultiForce® Air Lifting Bags

## MULTIFORCE

Paratech's MULTIFORCE Air Lifting Bag takes lifting to a whole new level. Integrating the latest technology with a unique understanding of lifting, Paratech has designed the MULTIFORCE Air Lifting Bag to exceed expectations. Ease of use and speed of deployment make the MULTIFORCE Air Lifting Bag an obvious choice whether the goal is saving lives or lifting locomotives. Paratech's patented design ensures that the high lift of this system can get into the tightest places possible, while the innovative remote lifting base keeps personnel safely away from the load when positioning the MULTIFORCE Air Lifting Bag. A dual stage feature keeps the load steady as the bag inflates so load drift is minimized and safety relief valves are integrated into the bag itself making over-inflation completely impossible. No mechanical coupling between air chambers means a stronger and safer lift. The remote lifting base doubles as a storage device keeping the bag safe and making it extremely easy to store.

**HEAVY-DUTY RUBBER GRIPPING SURFACE**

**BUILT-IN INTERNAL RELIEF VALVE**

**DUAL STAGE LIFTING FEATURE KEEPS THE LOAD STABLE THROUGH THE LIFT**

**INTEGRATED HEAVY-DUTY WHEELS FOR EASY TRAVEL**

**DETACHABLE PLACEMENT HANDLE EXTENDS TO 50 IN / 127 CM**

**LIFT HEIGHT OF 26 IN / 66 CM**

**HIGH VISIBILITY CENTERING STRIPES**

**REMOTE PLACEMENT BASE ASSISTS WITH POSITIONING AND LIFTING STABILITY**

**SIDE HANDLES DESIGNED TO ACCEPT FINGER HOOKS OR LARGER**

**CONFORMS TO EN13731-2007 MEETS NFPA 1960. 2024 ED 3RD PARTY CERTIFIED**

LIFT HEIGHT=	26 IN / 66 CM
LIFT CAPACITY=	37.2 TONS / 33,7 METRIC TONS
INSERTION HEIGHT=	4.5 IN / 11,4 CM
WEIGHT=(without placement device)	46.2 LBS / 21 KG
WEIGHT=(with placement device)	60.6 LBS / 27,5 KG
LENGTH=(without placement device)	23.75 IN / 60,33 CM
LENGTH=(with placement device)	30.71 in / 78 CM
WIDTH=(without placement device)	23.5 IN / 59,7 CM
WIDTH=(with placement device)	27.98 IN / 71,10 CM
SAFETY FACTOR=(with placement device)	4 TO 1
WORKING PRESSURE=	180 PSI / 12,4 BAR

Part No.	Description	Net Weight	
		lb	kg
22-88D025G3	Remote Placement MULTIFORCE G3	60.6	27,5
22-88D025G3K	Remote Placement MULTIFORCE Bag Kit G3	75.44	32,22
22-88D025G3DK	Remote Placement MULTIFORCE Bag Kit Din G3	75,44	32.22
22-88D025G3B	Basic MULTIFORCE G3	54,17	24.57
22-88D025G3BK	Basic MULTIFORCE Bag Kit G3	69.01	31,30
22-88D025G3BDK	Basic MULTIFORCE Bag Kit Din G3	69.01	31,30
22-88D025G3C	Compact MULTIFORCE G3	51.60	23,41
22-88D025G3CK	Compact MULTIFORCE Bag Kit G3	66.44	30,14
22-88D025G3CDK	Compact MULTIFORCE Bag Kit Din G3	66.44	30,14
22-890370G3K	Saddlebag Control Kit	14.84	6,73
22-890370G3DK	Saddlebag Control Kit Din	14.84	6,73
22-890370	Saddlebag Only	1.73	0,78

## 3 Kits to Fit Your Lifting Needs

### Remote Placement MultiForce G3

The ultimate MULTIFORCE Bag. Comes with wheels for easy transport and telescoping pole for remote placement. There is nothing quicker or safer for lifting.

- 22-88D025G3 REMOTE PLACEMENT MULTIFORCE G3
- 22-88D025G3K REMOTE PLACEMENT MULTIFORCE G3 BAG KIT (with saddlebag control kit)
- 22-88D025G3DK REMOTE PLACEMENT MULTIFORCE G3 BAG KIT DIN (with saddlebag control kit)



### Basic MultiForce G3

Comes with a full sized Placement Base with left and right handles, but without telescoping pole and wheels. Includes carrying strap with integrated air inlet protecting feature. Order this version if the safety of remote placement is not an option you need.

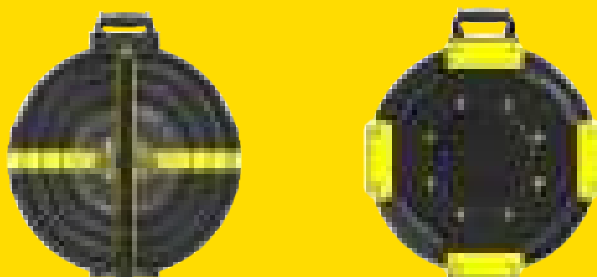
- 22-88D025G3B BASIC MULTIFORCE BAG G3
- 22-88D025G3BK BASIC MULTIFORCE BAG KIT G3 (with saddlebag control kit)
- 22-88D025G3BDK BASIC MULTIFORCE BAG KIT DIN G3 (with saddlebag control kit)



### Compact MultiForce G3

Comes with a reduced footprint for easier compartment storage on vehicles. Includes carrying strap with integrated air inlet protecting feature.

- 22-88D025G3C COMPACT MULTIFORCE G3
- 22-88D025G3CK COMPACT MULTIFORCE BAG KIT G3 (with saddlebag control kit)
- 22-88D025G3CDK COMPACT MULTIFORCE BAG KIT DIN G3 (with saddlebag control kit)



### MultiForce Positioning Lights

Includes two lights: one for replacing the left handle and one for the right handle. Direct retrofit. Each 300 lumen light operates on 2 AA batteries with a "low battery" light indicator. Up to 2 hours of continued use. Made of aircraft grade aluminum and still completely functional as lifting handles. Each light can swivel to direct the light where you want it. Light It Up!

- 22-892150K MULTIFORCE Positioning Lights



	COMPACT	BASIC	REMOTE
LIFT HEIGHT=	—	26 IN / 66 CM	—
LIFT CAPACITY=	—	37.2 TONS / 33,7 METRIC TONS	—
INSERTION HEIGHT=	—	4.5 IN / 11.4 CM	—
STORAGE HEIGHT=	4.88 IN / 12.39 CM	4.88 IN / 12.39 CM	6 IN / 15.3 CM
WEIGHT=(without placement device)	—	46.2 LBS / 21 KG	—
WEIGHT=(with placement device)	51.6 LBS / 23.41 KG	54.17 LBS / 24.57 KG	60.6 LBS / 27.5 KG
LENGTH=(without placement device)	—	23.75 IN / 60.33 CM	—
LENGTH=(with placement device)	24.46 IN / 62.13 CM	28.81 IN / 73.18 CM	30.71 IN / 78 CM
WIDTH=(without placement device)	—	23.5 IN / 59.7 CM	—
WIDTH=(with placement device)	23.63 IN / 60.02 CM	27.98 IN / 71.07 CM	27.98 IN / 71.1 CM



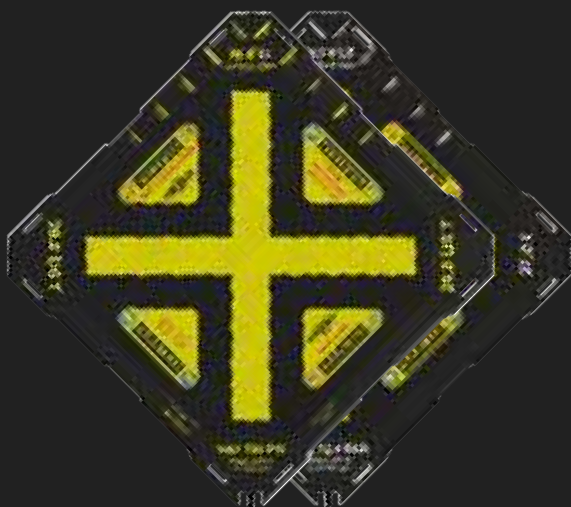
# MaxiForce® Air Lifting Bags



**AIR LIFTING BAGS**

**MaxiForce® Has the  
Power to Lift or  
Shift Weights up to  
*106.7 tons***

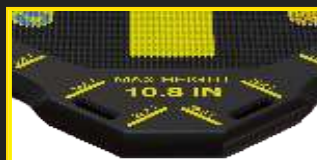
The MAXIFORCE® AIR LIFTING BAG is a thin, strong, molded envelope available in 14 different sizes. It is made from 3 layers of Neoprene covered Aramid fiber reinforcement and has the power to lift, move or shift weights up to 106.7 tons (96,8 metric tons) per bag. Control equipment and components play a critical role in successful lifting bag use and unlike other lifting bag systems, Paratech manufactures all of its major control components. This assures the quality of the lifting bag system from inflation to deflation.



**Easy and Accurate  
Positioning**



**Recessed Air Inlet for  
Added Durability**



**High Visibility Markings**



**NEW! Load Ruler**



SIZES	14
SQUARE SIZES	9
RECTANGULAR SIZES	5
SIZES WITH WEBSLOT	10
SMALLEST LIFTING CAPACITY	1.6 TONS / 1,4 METRIC TON
LARGEST LIFTING CAPACITY	106.7 TONS / 96,8 METRIC TONS
WORKING PRESSURE	180 PSI / 12,4 BAR
3 LAYERS OF ARAMID REINFORCEMENT	ALL
INTERLOCKING SURFACE	ALL

## What to Look for When Selecting a Lift Bag System

- SAFETY:** MAXIFORCE® Air Lifting Bags are extremely tough, made of Neoprene, embedded with three (3) full layers of Aramid fiber reinforcement on each side, giving the bags tremendous strength at full inflation. Each Air Lifting Bag has been subjected to a stringent factory pressure test to assure maximum operator safety.
- CAPACITY:** Does the height/weight capacity match the task? Non-emergency applications may only require one or two sizes. Emergency Service providers need a variety of lifting capacities.
- SHAPE:** Match the shape of the bag to the contact area of the load to maximize your effectiveness. Use rectangular shaped bags against linear loads and when lifting on hills or inclines. Square bags are great for stacking on flat surfaces. Rescue crews should have both square and rectangular lifting bags.
- THICKNESS:** The thinner the Air Lifting Bag the better. The most notable feature of quality manufacturing is the ability to produce a thin, tough lifting bag. MAXIFORCE Air Lifting Bags range in thickness from 3/4 in (19 mm) to 1.1 in (28mm)
- MATERIAL:** Neoprene with Aramid reinforcement comprise most of the lift bag materials. These materials provide strength, durability, flexibility and chemical resistance. MAXIFORCE is the first Aramid reinforced high pressure Air Lifting Bag.
- SURFACE:** Small molded raised bumps provide an interlocking surface for stacking 2 lifting bags. Once again MAXIFORCE was the first with an interlocking surface.
- POSITIONING Webslots:** At least 2 on all Air Lifting Bags with a 14,6 ton rating or higher. A must for rescue work. Allows for vertical placement, safe retrieval and carrying.
- MARKINGS:** Technical data is molded into the Air Lifting Bag surface. Warnings are permanently labeled. The famous "X" marks the center of the load.
- AIR INLET:** Brass with maximum pull strength. The inlet is threaded to receive a brass inflation nipple. Why brass? No corrosion. Easy to repair.
- WORKS QUIETLY:** Completely silent in use. There are no engine sounds or loud mechanical noises when MAXIFORCE is used.



**PRESET PRESSURE REGULATOR**  
Same Precision  
Functionality, Now with:

1. Increased durability
2. More compact size
3. Easier to use



**COMPACT DESIGN**  
Integrated gauge light  
Easy operation  
Safety couplings  
Fully enclosed gauges



## Man & Machine Kit

Paratech's Man & Machine kit covers areas of production, maintenance and rescue. The Air Lifting Bags and control equipment (all contained in one convenient package) included in the kit are so versatile and easy to use that you will wonder what you did before you had them!

22-8903MM-180	Man and Machine Kit
22-8903MMD-12	Man and Machine Kit, DIN
	Weight 63.2 lbs./ 28,7 kg

### KIT CONTENTS:

- Full complement of control equipment, hoses & fittings
- 2 small rectangular bags 6 x 12 in/15,2cm x 30,5cm
- 2 larger square bags
- 10 x 10in/25,4cm x 25,4cm
- 2 small square bags
- 6 x 6in/15,2cm x 15,2cm
- Heavy duty rolling storage case
- 4 plastic felling wedges

### STANDARDS AND LISTINGS

- National Coal Board (UK)
- NATO Stock Listings
- National Defense Supply Listing (US)
- Department of Industrial Relations (AU)
- Board of Mine Safety (SA)
- Japan Standards Institute (JA)
- GSA Contract Item (US)
- EN 13731 Air Bags For Fire Brigades
- MEETS NFPA 1960, 2024 ED
- ATEX



### DUAL DEADMAN 180PSI/12,4BAR CONTROLLERS

This controller will 'go anywhere'. It is compact and extremely portable. Rescue personnel can crawl into collapse areas without hindrance. There are no protruding joysticks or cumbersome enclosures. The push-button design must be depressed for inflation or deflation. Color coded gauges make it easy to read. Relief valves and open couplings are built in the controller for maximum safety.

# MaxiForce® Air Lifting Bags

**KPI-1**  
22-888110G3



**KPI-3**  
22-888120G3



**KPI-5**  
22-888130G3



**KPI-8**  
22-888135G3



**KPI-10**  
22-888138G3



**KPI-12**  
22-888140G3



**KPI-17**  
22-888150G3



**KPI-35L** 22-888180G3



**KPI-22** 22-888160G3



**KPI-28** 22-888165G3



**KPI-32** 22-888170G3



**KPI-74** 22-888200G3



**KPI-55** 22-888195G3



**KPI-44** 22-888190G3



Part Number	Model	Dimensions (in)	Dimensions (mm)	Weight (lb)	Weight (kg)	Lifting Capacity (lb)
22-888110G3	KPI-1	6 in x 6 in x 3/4 in	152 mm x 152 mm x 19 mm	1.6 / 1,4	3.0 / 76	1.2 / 0,6
22-888120G3	KPI-3	6 in x 12 in x 3/4 in	152 mm x 305 mm x 19 mm	4.0 / 3,6	3.5 / 89	2.3 / 1,0
22-888130G3	KPI-5	10 in x 10 in x 3/4 in	254 mm x 254 mm x 19 mm	6.3 / 5,7	5.4 / 137	3.2 / 1,5
22-888135G3	KPI-8	12 in x 12 in x 7/8 in	305 mm x 305 mm x 22 mm	9.1 / 8,2	6.4 / 163	5.4 / 2,5
22-888138G3	KPI-10	12 in x 18 in x 7/8 in	305 mm x 457 mm x 22 mm	14.6 / 13,3	7.1 / 180	8.0 / 3,6
22-888140G3	KPI-12	15 in x 15 in x 7/8 in	381 mm x 381 mm x 22 mm	15.5 / 14,0	8.1 / 206	8.3 / 3,6
22-888150G3	KPI-17	15 in x 21 in x 7/8 in	381 mm x 533 mm x 22 mm	22.7 / 20,6	9.0 / 226	11.4 / 3,8
22-888160G3	KPI-22	20 in x 20 in x 7/8 in	508 mm x 508 mm x 22 mm	29.8 / 27,0	10.8 / 274	14.5 / 5,2
22-888165G3	KPI-28	20 in x 26 in x 7/8 in	508 mm x 660 mm x 22 mm	39.8 / 36,1	11.8 / 299	19.5 / 8,8
22-888170G3	KPI-32	24 in x 24 in x 7/8 in	610 mm x 610 mm x 22 mm	44.6 / 40,5	13.0 / 330	21.2 / 9,6
22-888180G3	KPI-35L	15 in x 42 in x 7/8 in	381 mm x 1066 mm x 22 mm	47.9 / 43,5	9.5 / 241	22.5 / 10,2
22-888190G3	KPI-44	28 in x 28 in x 7/8 in	711 mm x 711 mm x 22 mm	62.4 / 56,6	15.3 / 388	28.7 / 13,0
22-888195G3	KPI-55	32 in x 32 in x 1.1 in	812 mm x 812 mm x 28 mm	81.6 / 74,1	17.0 / 432	50.7 / 23,0
22-888200G3	KPI-74	37 in x 37 in x 1.1 in	939 mm x 939 mm x 28 mm	106.7 / 96,8	20.0 / 508	68.2 / 30,9

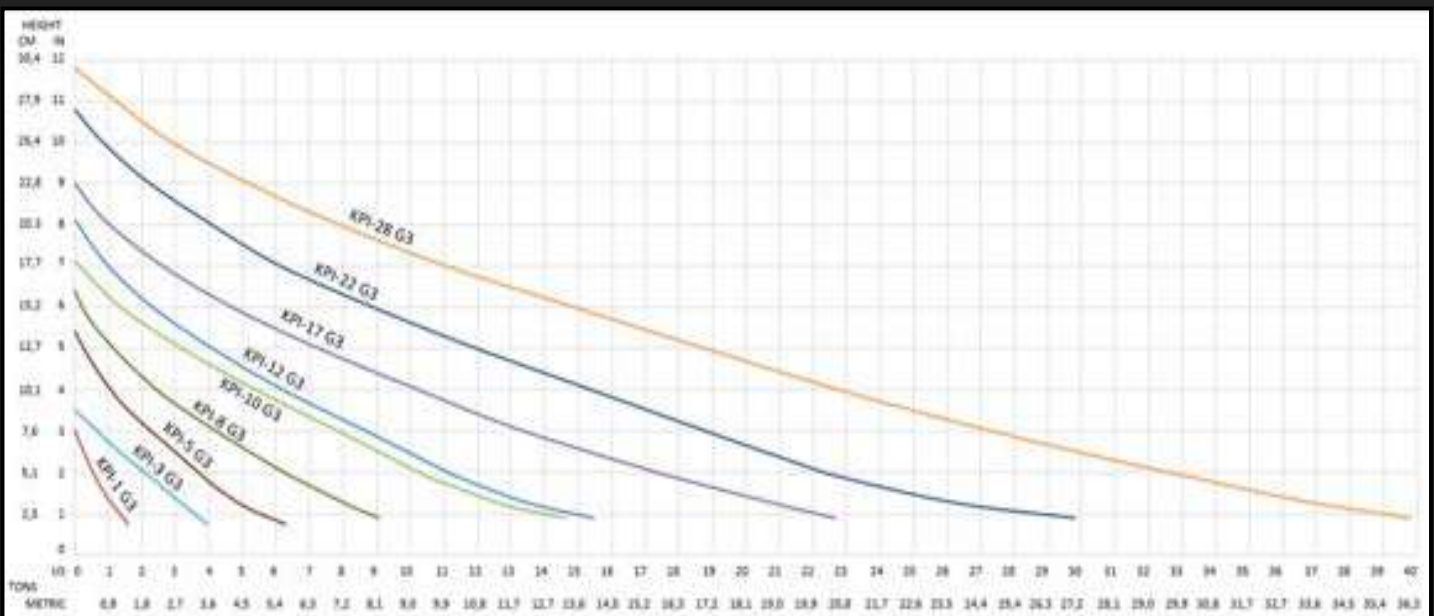
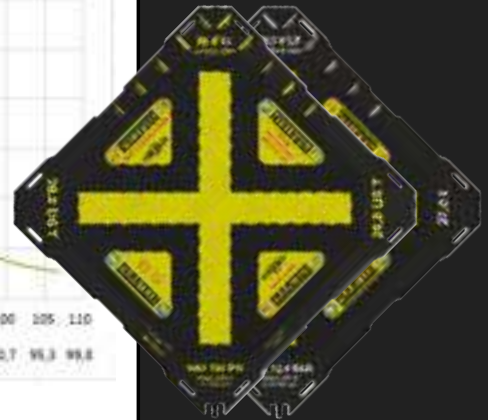
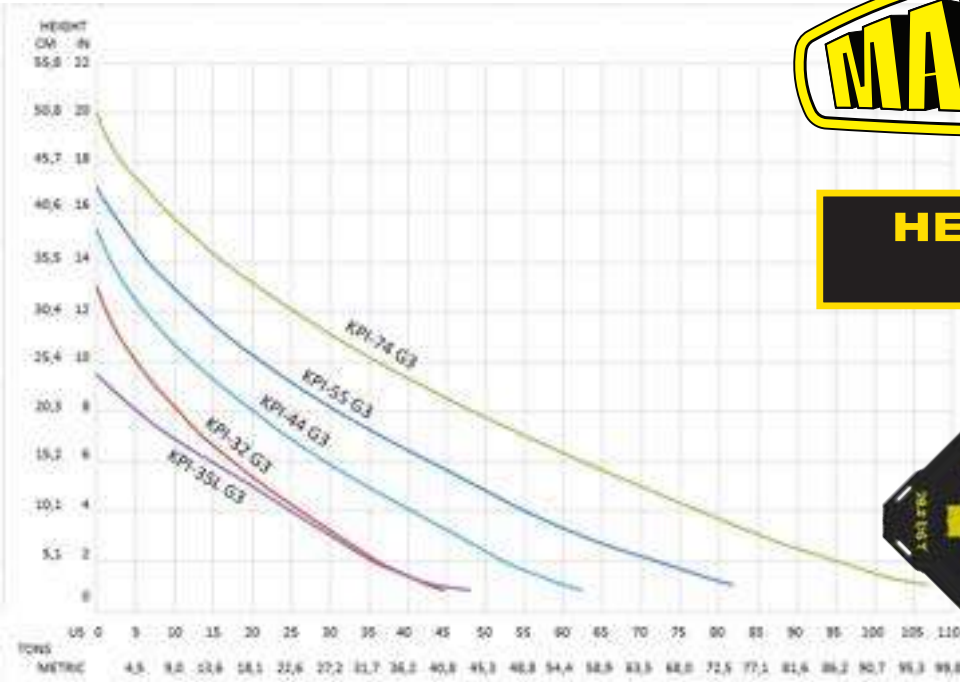
Lifting capacity and height will vary according to air pressure and bag contact area.



# MaxiForce® Air Lifting Bags



## HEIGHT VS. LOAD CAPACITY



# MaxiForce® Air Lifting Bags

## Pumper Kit, Light Duty, 3 Bags

Part No.	Description	Net Weight	
		lb	kg
22-889610G3-180	Pumper Kit, Light Duty, 3 Bags	52.1	23.6



**KPI-17**  
**22-888150G3**  
**QTY: 1**



**KPI-28**  
**22-888165G3**  
**QTY: 1**



**KPI-32**  
**22-888170G3**  
**QTY: 1**

## Engine Kit, Light Duty, 5 Bags

Part No.	Description	Net Weight	
		lb	kg
22-889620G3-180	Engine Kit, Light Duty, 5 Bags	54.1	24.5



**KPI-3**  
**22-888120G3**  
**QTY: 1**



**KPI-17**  
**22-888150G3**  
**QTY: 2**



**KPI-22**  
**22-888160G3**  
**QTY: 2**



## Tender Kit, Light Duty, Man and Machine, 7 Bags

Part No.	Description	Net Weight	
		lb	kg
22-889650G3-180	Tender Kit, Light Duty, Man and Machine	147.5	66.9



**KPI-1**  
**22-888110G3**  
**QTY: 1**



**KPI-3**  
**22-888120G3**  
**QTY: 1**



**KPI-5**  
**22-888130G3**  
**QTY: 1**



**KPI-12**  
**22-888140G3**  
**QTY: 2**



**KPI-17**  
**22-888150G3**  
**QTY: 2**



## Squad Kit, Medium Duty, 13 Bags

Part No.	Description	Net Weight	
		lb	kg
22-889660G3-180	Squad Kit, Medium Duty, 13 Bags	197.3.6	89.5



**KPI-1**  
**22-888110G3**  
**QTY: 1**



**KPI-3**  
**22-888120G3**  
**QTY: 1**



**KPI-5**  
**22-888130G3**  
**QTY: 1**



**KPI-17**  
**22-888150G3**  
**QTY: 2**



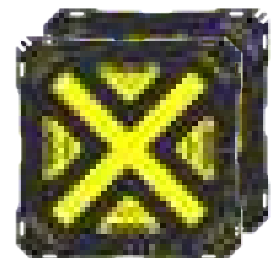
**KPI-22**  
**22-888160G3**  
**QTY: 2**



**KPI-44**  
**22-888190G2**  
**QTY: 2**



**KPI-28**  
**22-888165G3**  
**QTY: 2**



**KPI-32**  
**22-888170G3**  
**QTY: 2**



# MaxiForce® Air Lifting Bags

## Ladder Kit, Medium Duty, Man and Machine, 6 Bags

Part No.	Description	Net Weight	
		lb	kg
22-889630G3-180	Ladder Kit, Medium Duty	71.5	32.4



**KPI-1**  
**22-888110G3**  
**QTY: 1**



**KPI-3**  
**22-888120G3**  
**QTY: 1**



**KPI-22**  
**22-888160G3**  
**QTY: 2**



**KPI-28**  
**22-888165G3**  
**QTY: 2**

## Truck Kit, Heavy Duty, 5 Bags

Part No.	Description	Net Weight	
		lb	kg
22-889640G3-180	Truck Kit, Heavy Duty	87.7	38.0



**KPI-3**  
**22-888120G3**  
**QTY: 1**



**KPI-28**  
**22-888165G3**  
**QTY: 2**



**KPI-32**  
**22-888170G3**  
**QTY: 2**



## Light US&R, Heavy Duty, 15 Bags

Part No.	Description	Net Weight	
		lb	kg
22-889670G3-180	Light US&R, Heavy Duty	307.0	139.0



**MASTER CONTROL  
KIT CASES**  
22-890322-180  
QTY: 1

**DUAL DEADMAN  
BAG CONTROLLER G3**  
22-890900G3-180  
QTY: 1



**PRESET AIR LIFTING  
BAG REGULATOR**  
22-895401G3-180  
QTY: 1



**INLINE RELIEF VALVE**  
22-890490-180  
QTY: 4



**PARATECH NIPPLE  
AND LOCKING  
TIRE CHUCK**  
22-890731-180  
QTY: 1



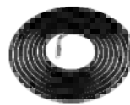
**"Y" with 2 COUPLINGS  
and 1 NIPPLE**  
22-890736-180  
QTY: 3



**SHUTOFF ADAPTER  
NIPPLE WITH  
INDUSTRIAL NIPPLE  
WITH VALVE**  
22-890732-180  
QTY: 1



**SHUTOFF ADAPTER  
NIPPLE WITH  
TWIST LOCK**  
22-890749-180  
QTY: 1



**AIR HOSE BLACK**  
3/8 in / 9,5 mm dia  
x 16 ft / 5m  
22-890513-180  
QTY: 1



**AIR HOSE BLUE**  
3/8 in / 9,5 mm dia  
x 16 ft / 5m  
22-890514-180  
QTY: 1



**AIR HOSE YELLOW**  
3/8 in / 9,5 mm dia  
x 16 ft / 5m  
22-890515-180  
QTY: 1



**AIR HOSE RED**  
3/8 in / 9,5 mm dia  
x 16 ft / 5m  
22-890516-180  
QTY: 1



**AIR HOSE GREEN**  
3/8 in / 9,5 mm dia  
x 16 ft / 5m  
22-890517-180  
QTY: 1



**PARATECH NIPPLE**  
1/4 IN / 0,6 CM (NPT F)  
22-890682-180  
QTY: 2



**PARATECH NIPPLE  
FOR ALB 7/16-24 LH THD**  
22-890686L-180  
QTY: 1



**PARATECH NIPPLE  
FOR ALB 7/16-24 RH THD**  
22-890686-180  
QTY: 3



**KPI-1**  
22-888110G3  
QTY: 1



**KPI-3**  
22-888120G3  
QTY: 1



**KPI-5**  
22-888130G3  
QTY: 1



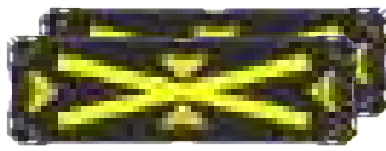
**KP-12**  
22-888140G3  
QTY: 2



**KPI-17**  
22-888150G3  
QTY: 2



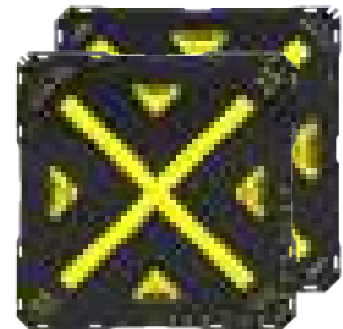
**KPI-28**  
22-888165G3  
QTY: 2



**KPI-35L**  
22-8881800G3  
QTY: 2



**KPI-44**  
22-888190G2  
QTY: 2



**KPI-55**  
22-888195G3  
QTY: 2

# MaxiForce® Air Lifting Bags

## USAR US&R, Heavy Duty, 24 Bags

Part No.	Description	Net Weight	
		lb	kg
22-889680G3-180	USAR US&R, Heavy Duty	613.0	278.0



**DUAL DEADMAN  
BAG CONTROLLER G3**  
22-890900G3-180  
QTY: 2

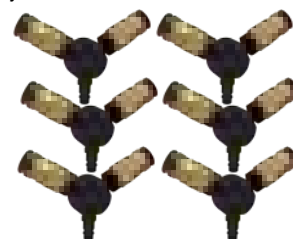
**MASTER CONTROL  
KIT CASES**  
22-890322-180  
QTY: 2



**PRESET AIR LIFTING  
BAG REGULATOR**  
22-895401G3-180  
QTY: 1



**INLINE RELIEF VALVE**  
22-890490-180  
QTY: 8



**"Y" with 2 COUPLINGS  
and 1 NIPPLE**  
22-890736-180  
QTY: 6



**SHUTOFF ADAPTER  
NIPPLE WITH  
INDUSTRIAL NIPPLE  
WITH VALVE**  
22-890732-180  
QTY: 2



**SHUTOFF ADAPTER  
NIPPLE WITH  
TWIST LOCK**  
22-890749-180  
QTY: 2



**AIR HOSE BLACK**  
3/8 in / 9,5 mm dia  
x 16 ft / 5m  
22-890513-180  
QTY: 2



**AIR HOSE BLUE**  
3/8 in / 9,5 mm dia  
x 16 ft / 5m  
22-890514-180  
QTY: 2



**AIR HOSE YELLOW**  
3/8 in / 9,5 mm dia  
x 16 ft / 5m  
22-890515-180  
QTY: 2



**AIR HOSE RED**  
3/8 in / 9,5 mm dia  
x 16 ft / 5m  
22-890516-180  
QTY: 2



**AIR HOSE GREEN**  
3/8 in / 9,5 mm dia  
x 16 ft / 5m  
22-890517-180  
QTY: 2



**PARATECH NIPPLE**  
1/4 IN / 0,6 CM (NPT F)  
22-890682-180  
QTY: 4



**PARATECH NIPPLE  
FOR ALB 7/16-24 LH THD**  
22-890686L-180  
QTY: 2



**PARATECH NIPPLE  
FOR ALB 7/16-24 RH THD**  
22-890686-180  
QTY: 6



**KPI-1**  
22-888110G3  
QTY: 2



**KPI-3**  
22-888120G3  
QTY: 2



**KPI-5**  
22-888130G3  
QTY: 2



**KPI-12**  
22-888140G3  
QTY: 2



**KPI-17**  
22-888150G3  
QTY: 2



**KPI-22**  
22-888160G3  
QTY: 2



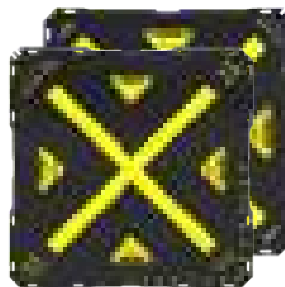
**KPI-28**  
22-888165G3  
QTY: 4



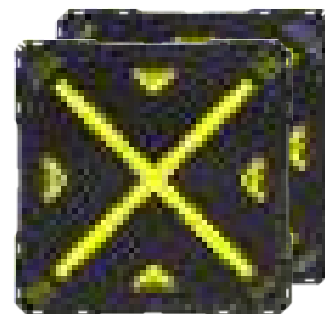
**KPI-35L**  
22-88881800G3  
QTY: 2



**KPI-44**  
22-888190G2  
QTY: 2



**KPI-55**  
22-888195G3  
QTY: 2



**KPI-74**  
22-888200G3  
QTY: 2



## Master Control Kit

Part No.	Description	Net Weight	
		lb	kg
22-890300G3-180	US	44.0	19,9
22-890300G3D-12	Metric	44.0	19,9

Part No.	Description	Quantity
22-890900G3-180	Dual Deadman Bag Controller G3	1
22-895401G3-180	Preset Air Lifting Bag Regulator 215 PSI CGS (14.8 bar) 5,500-0 psi / 379.2 -0 bar CGA	1
22-890490-180	Inline Relief Valve	4
22-890682-180	Paratech Nipple 1/4 in / 0,6 cm NPT F	2
22-890686-180	Paratech Nipple for ALB 7/16-24RH THD	3
22-890731-180	Paratech Nipple and Locking Tire Chuck	1
22-890686L-180	Paratech Nipple for ALB 7/16-24 LH THD	1
22-890736-180	"Y" with 2 Couplings and 1 Nipple	3
22-890749-180	Shutoff Adapter Nipple with Twist Lock	1
22-890513-180	Air Hose 3/8 in / 9,5 mm dia. x 16 ft / 5 m BLACK	1
22-890514-180	Air Hose 3/8 in / 9,5 mm dia. x 16 ft / 5 m BLUE	1
22-890515-180	Air Hose 3/8 in / 9,5 mm dia. x 16 ft / 5 m YELLOW	1
22-890516-180	Air Hose 3/8 in / 9,5 mm dia. x 16 ft / 5 m RED	1
22-890517-180	Air Hose 3/8 in / 9,5 mm dia. x 16 ft / 5 m GREEN	1
22-890322-180	Master Control Kit Case	1
22-890732-180	Shutoff Adapter Nipple with Industrial Nipple with Valve	2



**MASTER CONTROL KIT CASES**  
22-890322-180  
QTY: 1

**DUAL DEADMAN BAG CONTROLLER G3**  
22-890900G3-180  
QTY: 1



**PRESET AIR LIFTING BAG REGULATOR**  
22-895401G3-180  
QTY: 1



**INLINE RELIEF VALVE**  
22-890490-180  
QTY: 4



**PARATECH NIPPLE AND LOCKING TIRE CHUCK**  
22-890731-180  
QTY: 1



**"Y" with 2 COUPLINGS and 1 NIPPLE**  
22-890736-180  
QTY: 3



**SHUTOFF ADAPTER NIPPLE WITH INDUSTRIAL NIPPLE WITH VALVE**  
22-890732-180  
QTY: 1



**SHUTOFF ADAPTER NIPPLE WITH TWIST LOCK**  
22-890749-180  
QTY: 1



**AIR HOSE BLACK**  
3/8 in / 9,5 mm dia  
x 16 ft / 5m  
22-890513-180  
QTY: 1



**AIR HOSE BLUE**  
3/8 in / 9,5 mm dia  
x 16 ft / 5m  
22-890514-180  
QTY: 1



**AIR HOSE YELLOW**  
3/8 in / 9,5 mm dia  
x 16 ft / 5m  
22-890515-180  
QTY: 1



**AIR HOSE RED**  
3/8 in / 9,5 mm dia  
x 16 ft / 5m  
22-890516-180  
QTY: 1



**AIR HOSE GREEN**  
3/8 in / 9,5 mm dia  
x 16 ft / 5m  
22-890517-180  
QTY: 1



**PARATECH NIPPLE 1/4 IN / 0,6 CM (NPT F)**  
22-890682-180  
QTY: 2



**PARATECH NIPPLE FOR ALB 7/16-24 LH THD**  
22-890686L-180  
QTY: 1



**PARATECH NIPPLE FOR ALB 7/16-24 RH THD**  
22-890686-180  
QTY: 3

# MaxiForce® Air Lifting Bags

## Basic Control Kit

Part No.	Description	Net Weight	
		lb	kg
22-890351G3-180	US	21.0	9,5
22-890351G3D-12	Metric	21.0	9,5

Part No.	Description	Quantity
22-890900G3-180	Dual Deadman Bag Controller G3	1
	Preset Air Lifting Bag Regulator	
22-895401G3-180	215 PSI CGS (14,8 bar) 5,500 – 0 psi / 379.2 – 0 bar CGA 347/346 Inlet	1
22-890513-180	Air Hose 3/8 in / 9,5 mm dia. x 16 ft / 5 m BLACK	1
22-890515-180	Air Hose 3/8 in / 9,5 mm dia. x 16 ft / 5 m YELLOW	1
22-890516-180	Air Hose 3/8 in / 9,5 mm dia. x 16 ft / 5 m RED	1



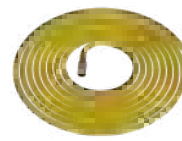
**1 - DUAL DEADMAN  
BAG CONTROLLER G3  
22-890900G3-180**



**1 - PRESET AIR LIFTING  
BAG REGULATOR  
22-895401G3-180**



**1 - AIR HOSE  
3/8 in / 9,5 mm dia.  
x 16 ft / 5 m Black  
22-890513-180**



**1 - AIR HOSE  
3/8 in / 9,5 mm dia.  
x 16 ft / 5 m Yellow  
22-890515-180**



**1 - AIR HOSE  
3/8 in / 9,5 mm dia.  
x 16 ft / 5 m Red  
22-890516-180**

## Vehicle Maintenance Kit

Part No.	Description	Net Weight	
		lb	kg
22-889600G3-180	Vehicle maintenance Kit	30.0	13,6

Part No.	Model	Dimensions	Dimension	Max Lifting Capacity		Max Lifting Height		Quantity	Weight	
		in	mm	US Ton	Metric Ton	in	mm		lb	kg
22-888190G3	KPI-44	28 x 28 x 7/8	711 x 711 x 22	52.7	47,8	15.3	388	2	28.7	13,0

Part No.	Description	Quantity
22-890490-180	Inline Relief Valve	2
22-890900G3-180	Dual Deadman Bag Controller G3	1

Part No.	Description	Quantity
22-890513-180	Air Hose 3/8 in / 9,5 mm dia. x 16 ft / 5 m BLACK	1
22-890515-180	Air Hose 3/8 in / 9,5 mm dia. x 16 ft / 5 m YELLOW	1
22-890516-180	Air Hose 3/8 in / 9,5 mm dia. x 16 ft / 5 m RED	1



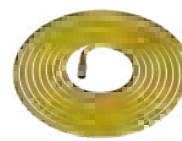
**1 - DUAL DEADMAN  
BAG CONTROLLER G3  
22-890900G3-180**



**2 - INLINE RELIEF VALVE  
22-890490-180**



**1 - AIR HOSE  
3/8 in / 9,5 mm dia.  
x 16 ft / 5 m Black  
22-890513-180**



**1 - AIR HOSE  
3/8 in / 9,5 mm dia.  
x 16 ft / 5 m Yellow  
22-890515-180**



**1 - AIR HOSE 3/8  
in / 9,5 mm dia.  
x 16 ft / 5 m Red  
22-890516-180**



**KPI-44  
22-888190G3  
QTY: 2**

## Paratech 24 Pneumatic Component & Adapter Kit

Part No.	Description	Net Weight	
		lb	kg
22-890729-180	Paratech 24 & Adapter	15.0	6,8

Part No.	Description	Quantity
22-890732-180	Paratech Nipple & Industrial Nipple with Valve	1
22-890734-180	Paratech Nipple & Glad Hand	1
22-890749-180	Paratech Nipple & Industrial Twist Lock with Valve	1
22-890731-180	Paratech Nipple & Locking Tire Chuck	1
22-890735-180	"Y" with 2 Paratech Couplings & 1/4 in NPT F	1
22-890736-180	"Y" with 2 Paratech Couplings & MAXIFORCE® Nipple	1
22-890740-180	"Y" with 3 Paratech Couplings	1
22-890730-180	Paratech Double Male Nipple	1
22-890737-180	Paratech Nipple and Tire Valve Inflator	1
22-890700V-180	Paratech Coupling with 3/8 in / 1 cm Hose Stem with Ferrule	1
22-890691-180	Paratech Nipple with 3/8 in / 1 cm & Hose Stem with Ferrule	1
22-890624-180	Paratech Coupling with 1/4 in NPSM with "O" Ring	1
22-890721AV	Ferrule for Paratech Nipple with 3/8 in / 1 cm hose stem	1
22-890624	Paratech Nipple for ALB 7/16-24 LH THD	1
22-890686-180	Paratech Nipple for ALB 7/16-24 RH THD	1
22-890710V-180	Paratech Coupling with 1/2 in NPT M	1
22-890711V-180	Paratech Coupling with 1/4 in NPT F	1
22-890682-180	Paratech Nipple with 1/4 in NPT F	1
22-890720V-180	Paratech Coupling with 1/2 in NPT F	1
22-890685-180	Paratech Nipple with 1/2 in NPT F	1
22-890684-180	Paratech Nipple with 1/2 in NPT M	1
22-890681-180	Paratech Nipple with 1/4 in NPT M	1
22-890738-180	Paratech Nipple & 12 in / 30.5 cm Hose with Clamp	1
22-000905	Storage Case	1



Paratech Nipple and Industrial Nipple with Valve



Paratech Nipple and Glad Hand



Paratech Nipple and Industrial Twist Lock with Valve



Paratech Nipple and Locking Tire Chuck



'Y' with 2 Paratech Couplings and 1/4 in NPT F



'Y' with 2 Paratech Couplings and MAXIFORCE® Nipple



'Y' with 3 Paratech Couplings



Paratech Double Male Nipple



Paratech Nipple and Tire Valve Inflator



Paratech Coupling with 3/8 in / 1 cm Hose Stem with Ferrule



Paratech Nipple with 3/8 / 1 cm Hose Stem with Ferrule



Paratech Coupling with 1/4 in NPSM with "O" Ring



Paratech Nipple with 3/8 in / 1 cm Hose Stem with Ferrule



Paratech Nipple for ALB 7/16-24 LH THD



Paratech Nipple for ALB 7/16-24 RH THD



Paratech Nipple with 1/2 in NPT M



Paratech Coupling with 1/4 in NPT F



Paratech Nipple with 1/4 in NPT F



Paratech Coupling with 1/2 in NPT-F



Paratech Nipple with 1/2 in NPT F



Paratech Nipple with 1/2 in NPT M



Paratech Nipple with 1/4 in NPT M



Paratech Nipple and 12 in / 30.5 cm hose with clamp



Storage Case



Ferrule for Paratech Nipple with 3/8 in / 1 cm hose stem PN 22-890624

## MaxiForce® Air Lifting Bag Safety Icons



Maximum Operating Pressure



Maximum Operating Pressure



Do Not Lift Sharp Objects



Read Instructions



Wear Safety Gloves



Wear Head And Eye Protection



Wear Safety Footwear



Stack Two Lift Bags



# MaxiForce® Air Lifting Bags

## MaxiForce Accessories



**DUAL DEADMAN BAG CONTROLLER G3**  
Net Weight: 3.7lb; 1,7kg  
Part No. 22-890900G3-180



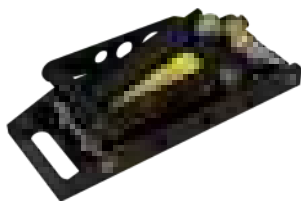
**INLINE RELIEF VALVE FOR G3 200 psi / 13,8 bar** Designed to relieve over-pressurization and allow a lift bag to remain inflated under a load. This valve will relieve excess pressure from an inflated bag caused by load shifts or temperature changes.  
Net Weight: 1.0lb; 0,4kg  
Part No. 22-890490-180



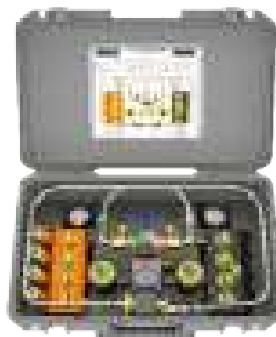
**PRESET AIR LIFTING BAG REGULATOR**  
215 PSI CGA (14,8 BAR)  
Piston Type 5,500-0 psi / 379,2-0 bar CGA 347/346 inlet  
Net Weight: 3.6lb; 1,6kg  
Part No. 22-895401G3-180



**PRESSURE REGULATOR**  
215 PSI DIN (14,8 BAR)  
Piston Type Euro 5,500-0 psi / 379.2-0 bar DIN  
Net Weight: 3.8lb; 1,7kg  
Part No. 22-895401DG3-12



**MANUAL AIR COMPRESSOR**  
2 STAGE - FOOT/HAND  
Net Weight: 14.7lb; 6,7kg  
Part No. 22-800400-180



**AIR CONTROL CASE**  
Net Weight: 30.9lb 14kg  
Optimal air distribution hub to multiple rescue sites, securing reliable constant airflow.  
Part No. 22-895750-180  
Part No. 22-895750D-12 (DIN)



**MASTER CONTROL CASE ONLY**  
Part No. 22-890322-180



**Ferrule for Paratech Nipple with 3/8 in / 1 cm hose stem**  
22-890624



**Nipple with 1/4 in NPT M fits MAXIFORCE® and Vetter**  
22-890667



**Locking Nipple with 1/8 in NPT M fits MAXIFORCE® G3 and Vetter**  
22-890668



**Paratech Lock Nipple with 3/8 in / 1cm hose thread**  
22-890672



**Paratech Nipple for ALB 7/16-24 LH THD**  
22-890686L-180



**Paratech Nipple for ALB 7/16-24 RH THD**  
22-890686-180



**Paratech Nipple with 1/4 in NPT F**  
22-890682-180



**Paratech Nipple with 1/2 in NPT M**  
22-22-890684-180



**Paratech Nipple with 1/2 in NPT F**  
22-890685-180



**Locking Nipple with 3/8 in / 1 cm hose stem fits MAXIFORCE® G3 and Vetter**  
22-890691-180



**Locking Nipple with Nipple 7/16-24 LH MAXIFORCE® G3 and Vetter**  
22-890652L-180



**Paratech/Vetter Nipple 7/16-24 RH**  
22-890652-180



**Paratech Coupling with 3/8 in / 0.4 cm hose stem w/Ferrule - consists of**  
22-890700AV-180 & 22-890624  
22-890700V-180



**Paratech Coupling with 3/8 in / 1cm hose stem**  
22-890700AV-180

# MaxiForce® Air Lifting Bags



**Paratech Coupling with 1/2 in NPT M**  
22-890710V-180



**Paratech Coupling with 1/4 in NPT F**  
22-890711V-180



**Paratech Coupling with 1/2 in NPT F**  
22-890720V-180



**Paratech Coupling with 1/4 in NPSM with 'O' Ring**  
22-890721AV-180



**Paratech Coupling with 1/4 in NPSM open**  
22-890703V-180



**Paratech Double Male Nipple**  
22-890730-180



**Paratech Nipple Industrial Nipple with Valve**  
22-890732-180



**Paratech Nipple and Glad Hand**  
22-890734-180



**Y' with 2 Paratech Couplings and 1/4 in NPT F**  
22-890735-180



**'Y' with 2 Paratech Couplings and MAXIFORCE® Nipple**  
22-890736-180



**'Y' with 3 Paratech Couplings**  
22-890740-180



**Paratech Nipple and Tire Valve Inflator**  
22-890737-180



**Paratech Nipple and Locking Tire Chuck**  
22-890731-180



**Paratech Nipple and 12 in / 30.5 cm hose with clamp**  
22-890738-180



**Paratech Nipple and Industrial Twist Lock with Valve**  
22-890749-180



**Industrial Coupling 1/4 in NPT F**  
22-890751



**Industrial Coupling 1/4 in NPT M**  
22-890752



**Industrial Nipple 1/8 in NPT M**  
22-890760



**Industrial Nipple 1/4 in NPT M**  
22-890761



**Industrial Nipple 3/8 in NPT M**  
22-890762



**Industrial Nipple 1/4 in NPTF**  
22-890763



**Paratech Coupling with 1/4 in NPT M open**  
22-890704V-180



**Paratech Coupling with 1/4 in NPT M**  
22-890712V-180



**Paratech Coupling with 3/8 in NPT M**  
22-890714V-180



**Paratech Coupling with 3/8 in NPT F**  
22-890716V-180



**Paratech Nipple with 1/4 NPT M**  
22-890681-180



**Nipple (Strut Inlet) 1/8 in NPSM**  
22-796065



**180 Nipple (Strut Inlet) 1/8 in NPSM**  
22-796065-180



**Hose Splice 3/8 in / 9.5 mm dia. x 3/8 in / 9.5 mm dia.**  
22-890673



**Hose Stem 1/4 in NPT M with 3/8 in / 9.5 mm dia.**  
22-890674



**Hose Barb 1/4 in NPT F with 3/8 in / 9.5 mm dia.**  
22-890675



**Paratech Nipple with 3/8 in NPT F**  
22-890777-180



**Dual Tank Connector with Check Valves - CGA 346/347**  
Net Weight: 1.5lb / 0.68kg  
22-800130



**Dual Tank Connector with Check Valves - DIN Net**  
Weight: 1.5lb / 0.68kg  
22-800135

# MaxiForce® Air Lifting Bags

## MaxiForce Accessories

### NIPPLE FOR ALB

Part No.

7/16-24 RH 22-890686-180

7/16-24 LH 22-890686L-180



### NIPPLE PROTECTOR

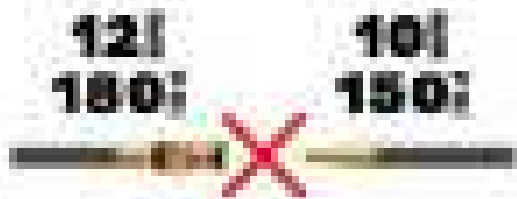
Part No. 22-890709T



### SWIVEL FITTING

Part Number: 22-890784-180

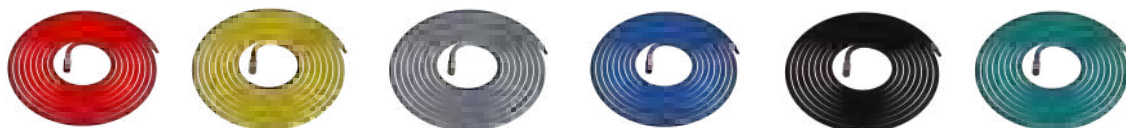
Weight: .46 lbs (208,6 g)



## Air Hoses

A full 3/8 in / 9,5 mm inside diameter in a wide range of colors and lengths. Couplings and nipples are field replaceable using simple hand tools. Working pressure of 300 psi / 20,7 bar assures reliability. Hose stays flexible over the full operating temperature range of the lift bag. Closed couplings prevent air escape at disconnect (no blowing debris).

### 3/8 IN / 9,5 mm diameter



Length	RED	YELLOW	GRAY	BLUE	BLACK	GREEN
16ft / 5m (2.5 lb / 1,1kg)	22-890516-180	22-890515-180	22-890518-180	22-890514-180	22-890513-180	22-890517-180
32ft / 10m (4.5 lb / 2,0kg)	22-890521-180	22-890520-180	22-890525-180	22-890523-180	22-890522-180	22-890524-180
50ft / 15m (7.0 lb / 3,2kg)	22-890541-180	22-890542-180	22-890545-180	22-890543-180	22-890546-180	22-890544-180

Air Hoses for MaxiForceG3 180 PSI / 12,4 Bar\*



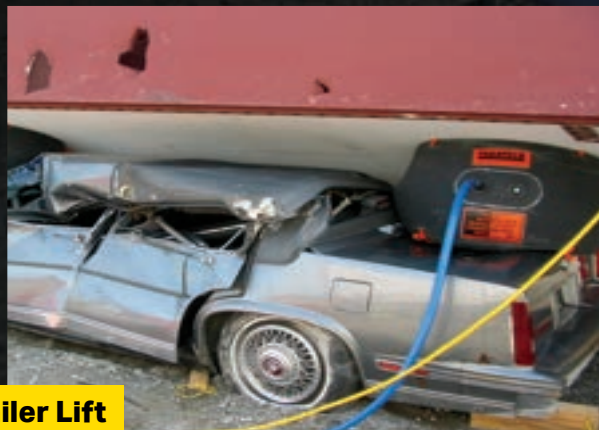




## ***Ideal Tool for High Lift Requirements of Non-Reinforced Broad Surfaces Found on Trucks, Vans & Light Aircraft.***

Rescue Air Cushions are an ideal tool for high lift requirements of non-reinforced broad surfaces found on trucks, vans and light aircraft. Cushions are also used by Trench Collapse Rescue Teams to fill voids and regain support for Rescue Struts, wall braces and shoring. With a maximum lift height up to 40 inches (102 cm), Rescue Air Cushions are available in 4 sizes.

Paratech's Rescue Air Cushions are ready for a wide range of applications and are extremely versatile.



**Trailer Lift**



**Vehicle Lift**

**Rescue Air Cushions are available in 4 sizes for maximum versatility and a wide range of applications.**

**Typical applications include:**

- Major vehicle accidents (cars, trucks, buses)
- Light aircraft recovery
- Filling voids created in trench collapse
- Small vehicle turnovers
- Downed or trapped animals
- Flotation device
- Industrial lifting applications

A soft footprint allows placement on soft and uneven terrain, with a contact area exceeding lifting height.

Constructed with a highly durable contact area, Rescue Air Cushions have neoprene coated exterior and interior reinforcement belts.



**Vehicle Lift**

## **Safety And Operational Features:**

- Pressure relief valves on cushions and control valve
- Interior reinforcing maintains flat lift surfaces for direction of lift force
- Quick connect couplings with locking ring
- Positioning handles
- Each cushion is factory tested at 1.3 times operating pressure
- Contact area diameter exceeds lifting height
- Operating pressure of 0-14.5 psi / 1,0 bar aramid reinforced

## **Advantages:**

- Lifting heights from 17 in to 40 in / 43 cm to 102 cm
- Greater stability due to the size of the contact area
- Lighter loads have predictable lift results
- Full lift capacity over full lifting height
- Soft footprint allows placement on soft and uneven terrain
- User repairable for limited damage or punctures
- Four sizes to choose from

## **Ease of Operation:**

Air Cushion inflation can be made from a variety of compressed air sources:

- Industrial compressed air
- Compressed air storage cylinders
- Air brake systems
- Portable blowers

Portable, hand held controller includes adjustable valves, gauges and pressure reliefs



**Trailer Lift**



**Chinook Helicopter Lift**



# Rescue Air Cushions

## Rescue Air Cushions

D/K

A/K

B/K

C/K



Part No.	Description	Diameter in / cm	Height Deflated in / cm	Height Inflated in / cm	Lift at Max Pressure lb / kg	Air Requirement cu ft / ltr	Weight lb / kg
22-887005K	A/K Cushion 3.3 Ton (3,0 t)	24 / 61	2 / 5	17 / 43	6,560 / 2,976	10.4 / 295	35 / 15
22-887010K	B/K Cushion 5.1 Ton (4,7 t)	30 / 76	2 / 5	23 / 59	10,250 / 4,650	22.0 / 620	38 / 17
22-887015K	C/K Cushion 7.4 Ton (6,7 t)	36 / 91	2 / 5	24 / 61	14,761 / 6,697	31.6 / 895	50 / 22
22-887020K	D/K Cushion 13.7 Ton (11,9 t)	48 / 122	4 / 10	39.4 / 100	26,248 / 11,906	106.0 / 3,002	56 / 25

## Rescue Air Cushions Kits

### Each Rescue Air Cushion Kit consists of:

Two Rescue Air Cushions with pressure reliefs  
A dual safety controller with quick connect couplings  
One length of 3/8 in / 9,5 mm diameter high pressure  
Hose with quick connect couplings 16 ft / 5 m

Two lengths of 1 in / 2,5 cm diameter low pressure  
Hose with quick connect couplings, 20 ft / 6 m  
Storage and carrying case Repair kit

## 6 Ton / 5.4 Metric Ton Lift Kit

Part No.	Description	Net Weight	
		lb	kg
22-887100KG2	AK/6 Ton (5,4 t)	103.0	47,0

Part No.	Description	Quantity
22-887005K	A/K Cushion 3.3 Ton (3,0 t)	2
22-887006	A/K Cushion Carrying Case	1
22-887305G3	Dual Deadman Cushion Controller G3 14.5 psi / 1 bar	1
22-887400	Air Hose 1 in / 25 mm dia. x 20 ft / 6 m RED	1
22-887401	Air Hose 1 in / 25 mm dia. x 20 ft / 6 m BLUE	1
22-890513	Air Hose 3/8 in / 9,5 mm dia. x 16 ft / 5 m BLACK	1
22-887099K	Repair Kit	1

### Regulator needed for kit operation



1 - A/K  
Cushion  
Carrying  
Case  
22-887006

1 - Air Hose  
1 in / 25  
mm dia.  
x 20 ft /  
6 m Red  
22-887400

1 - Dual  
Deadman  
Cushion  
Controller G3  
22-887305G3

1 - Repair Kit  
22-887099K

1 - Air Hose  
1 in / 25  
mm dia.  
x 20 ft /  
6 m Blue  
22-887401

1 - Air Hose  
3/8 in / 9,5  
mm dia.  
x 16 ft / 6 m  
Black  
22-890513

## 10 Ton / 9 Metric Ton Lift Kit

Part No.	Description	Net Weight	
		lb	kg
22-887102KG2	BK/10 Ton (9 t)	111.0	50,0

Part No.	Description	Quantity
22-887010K	B/K Cushion 5.1Ton (4,7 t)	2
22-887011	B/K Cushion Carrying Case	1
22-887305G3-180	Dual Deadman Cushion Controller G3 14.5 psi / 1 bar	1
22-887400	Air Hose 1 in / 25 mm dia. x 20 ft / 6 m RED	1
22-887401	Air Hose 1 in / 25 mm dia. x 20 ft / 6 m BLUE	1
22-890513	Air Hose 3/8 in / 9,5 mm dia. x 16 ft / 5 m BLACK	1
22-887099K	Repair Kit	1

**Regulator needed for kit operation**



## 14 Ton / 12,7 Metric Ton Lift Kit

Part No.	Description	Net Weight	
		lb	kg
22-887104KG2	CK/14 Ton (12,7 t)	139.0	63,0

Part No.	Description	Quantity
22-887015K	C/K Cushion 7.4 Ton (6,7 t)	2
22-887016	C/K Cushion Carrying Case	1
22-887305G3	Dual Deadman Cushion Controller G3	1
22-887400	Air Hose 1 in / 25 mm dia. x 20 ft / 6 m RED	1
22-887401	Air Hose 1 in / 25 mm dia. x 20 ft / 6 m BLUE	1
22-890513	Air Hose 3/8 in / 9,5 mm dia. x 16 ft / 5 m BLACK	1
22-887099K	Repair Kit	1

**Regulator needed for kit operation**



## 26 Ton / 23,6 Metric Ton Lift Kit

Part No.	Description	Net Weight	
		lb	kg
22-887106KG	DK/26 Ton (23,6 t)	150.0	68,0

Part No.	Description	Quantity
22-887020K	D/K Cushion 13.7 Ton (11,9 t)	2
22-887021	D/K Cushion Carrying Case	1
22-887305G3	Dual Deadman Cushion Controller G3 14.5 psi / 1 bar	1
22-887400	Air Hose 1 in / 25 mm dia. x 20 ft / 6 m RED	1
22-887401	Air Hose 1 in / 25 mm dia. x 20 ft / 6 m BLUE	1
22-890513	Air Hose 3/8 in / 9,5 mm dia. x 16 ft / 5 m BLACK	1
22-887099K	Repair Kit	1

**Regulator needed for kit operation**



# Rescue Air Cushions

## Rescue Air Cushions Accessories



**A/K CUSHION  
CARRYING CASE**  
PVC coated, toggle fastening  
Net Weight: 2.4lb 1,1kg  
Part No. 22-887006



**B/K CUSHION  
CARRYING CASE**  
PVC coated, toggle fastening  
Net Weight: 3.0lb 1,4kg  
Part No. 22-887011



**C/K CUSHION  
CARRYING CASE**  
PVC coated, toggle fastening  
Net Weight: 4.3lb 2,0kg  
Part No. 22-887016



**D/K CUSHION  
CARRYING CASE**  
PVC coated, toggle fastening  
Net Weight: 6.1lb 2,8kg  
Part No. 22-887021



**Dual Deadman Cushion  
Controller G3**  
14.5 psi / 1,0 bar  
Net Weight: 4.2lb 1,9kg  
Part No. 22-887305G3



**AIR HOSE RED 1 in / 25  
mm dia.; 20 ft / 6 m**  
Net Weight: 11.0lb / 5,0kg  
Part No. 22-887400  
40 ft / 12 m  
Net Weight: 22.0lb / 10,0kg  
Part No. 22-887405  
60 ft / 18 m  
Net Weight: 33.0lb / 15,0kg  
Part No. 22-887410



**AIR HOSE BLUE**  
1 in / 25 mm dia.; 20 ft / 6 m  
Net Weight: 11.0lb / 5,0kg  
Part No. 22-887401  
40 ft / 12 m  
Net Weight: 22.0lb / 10,0kg  
Part No. 22-887406  
60 ft / 18 m  
Net Weight: 33.0lb / 15,0kg  
Part No. 22-887411



**AIR HOSE BLACK**  
3/8 in / 9.6 mm dia.; 16 ft / 5 m  
Net Weight: 2.0lb 0,9kg  
Part No. 22-890513-180



**PRESET REGULATOR**  
215 PSI CGA (14.8 BAR)  
Piston Type 5,500-0 psi /  
379,2-0 bar CGA 347/346 inlet  
Net Weight: 3.6lb 1,6kg  
Part No. 22-895401G3-180



**REGULATOR G3**  
215 PSI DIN (14.8 BAR)  
Piston Type Euro 5,500-0 psi /  
379,2-0 bar DIN  
Net Weight: 3.5lb 1,6kg  
Part No. 22-895401DG3-12



**REPAIR KIT / MEDIUM  
PRESSURE**  
Adhesive, assorted aramid/  
neoprene patches and  
60 grit emory cloth  
Net Weight: 0.4lb 0,2kg  
Part No. 22-887099K



**INLINE RELIEF, SHUT  
OFF & HOSE ASSEMBLY**  
1 in / 2,5 cm x 16 ft / 5 m  
Net Weight: 13.5lb / 6,1kg  
14.5 PSI / 1.0 BAR RED HOSE  
Part No. 22-887350  
14.5 PSI / 1.0 BAR  
BLUE HOSE  
Part No. 22-887352



**ADAPTER NIPPLE**  
5/8 in / 1,6 cm nipple  
x 1.0 in / 2,5 cm hose  
Net Weight: 0.2lb 0,1kg  
Part No. 22-887460



**QUICK CONNECT  
COUPLINGS**  
for 1 in / 2,5 cm hose  
Net Weight: 0.6lb 0,3kg  
Part No. 22-887450





<b>RAC Information</b>		<b>Medium Pressure</b>			
TYPE PART NUMBER		AK 22-887005K	BK 22-887010K	CK 22-887015K	DK 22-887020K
MAXIMUM LOAD	lb kg	6,560 2.976	10,252 4.650	14,764 6.697	26,248 11.906
LIFT HEIGHT	in cm	17 43	23 58	24 61	39.4 100
DIAMETER	in cm	24 61	30 76	36 91	48 122
AIR REQUIRED	cu ft ltrs	10.4 295	22 620	31.6 895	106 3,002
WEIGHT PACKAGED	lb kg	35 16	38 17	50 23	56 25
INSERT SPACE APPROXIMATELY	in cm	2 5	2 5	2 5	4 10
WORKING SURFACE	<b>3 PLY NEOPRENE COATED BELT 0.2 in / 5 mm NOMINAL THICKNESS</b>				
INFLATION PORT	<b>MOLDED THREADED FITTING 1-1 / 6-12</b>				
INLET NIPPLE	<b>QUICK CONNECT W/THREADED LOCKING RING</b>				
RESTRAINT WEBS	<b>TWIN NYLON WEBS 1 in / 25 mm WIDE 2,399 lb / 1088 kg BREAKING STRAIN</b>				
SIDE WALL	<b>NEOPRENE COATED (BOTH SIDES) ARAMID FABRIC, KEVLAR REINFORCED</b>				
BUILT IN RESET RELIEF VALVE	<b>MOLDED, THREADED, SPRING LOADED SELF RESETTING AT 14.5 psi / 1.0 bar +/-10%</b>				

# Forcible Entry Tools

## Forcible Entry Tools

Paratech offers a wide range of forcible entry tools. From the compact and lightweight personal entry tools to the all-purpose Hooligan tools to the PRT Kit, Paratech has every tool you need to break through any barrier.



### Hooligan Comparisons

	SIZES	FINISH	APPLICATION
SPF (Single Piece Forged)	1	Nickel Plated	Rescue
Standard	4	Nickel Plated	Rescue
Light Weight	2	Nickel Plated	Rescue

### Personal Tool Comparisons

	WEIGHT	LENGTH	APPLICATION
Pry-Axe	6.6 lbs / 3,0 kg	18.4 in / 46,7 cm	Rescue/Police/Military
Biel Tool	3.1 lbs / 1,4 kg	15 in / 38,1 cm	Rescue/Police/Military
TiTAN Crash Axe	2.5 lbs / 1,13 kg	15.7 in / 39,9 cm	Rescue/Police/Military

For more than 60 years Paratech has set the standard for high quality heavy-duty forcible entry tools. These tools are designed to pry, pound, puncture, twist and cut open or remove all types of barriers between emergency personnel and the life they are saving. From our popular full line of Hooligan Tools to our powerful Percussive Rescue Tool (PRT), to our compact & versatile Pry-Axe...Paratech has led the way in design and manufacturing of dependable and unstoppable forcible entry tools.



## ***Hooligan Tool***

Setting the standard of excellence for Halligan type tools, the heavy duty Paratech Hooligan tools have features such as a stress proof bar, lightweight aluminum handles with machine grooved hand grips and gently curved claws that maximize prying leverage. Paratech also offers the SPF, a single piece forged Hooligan, a top choice by many.

## ***Personal Entry Tools***

Paratech offers 3 different types of personal forcible entry tools, the Pry-Axe, Biel Tool, and the TiTAN Crash Axe. The Pry-Axe has an extendable claw to offer the powerful 'Slam & Ram' capability for quick and decisive entry in tight quarters. The claw can be removed and inserted into the keyway in the axe head for twisting leverage.



## ***PRT Percussive Rescue Tool***

The PRT is a powerful hand held rescue tool that can be put to work with a minimal amount of training. The 'Slam & Ram' action of the PRT directs all of its force directly at the point of impact, without deflection, making it safer and more effective than a sledge and wedge.



## Hooligan Tool

The Hooligan Tool is one of the world's most popular forcible entry tools. These heavy-duty tools were designed to pound, puncture, pry, twist, and cut all types of barriers encountered by emergency service personnel. The head and claw are forged from high alloy steel, heat treated for maximum strength, then fitted to a 1" (2,5 cm) stress proof bar. The bar has machine grooved non-slip grips. The Hooligan Tool features a claw that is gently curved for maximum prying leverage. The claw opening is parallel and fits over locks, hasps and many door bars. It can also be used as a nail puller and a gas shut off during emergencies. The "Highway Hooligan Tool" features a metal cutting claw with a machine sharpened metal cutter that uses the can opener principle to cut heavy gauge metal and composites.

### Recommended Users

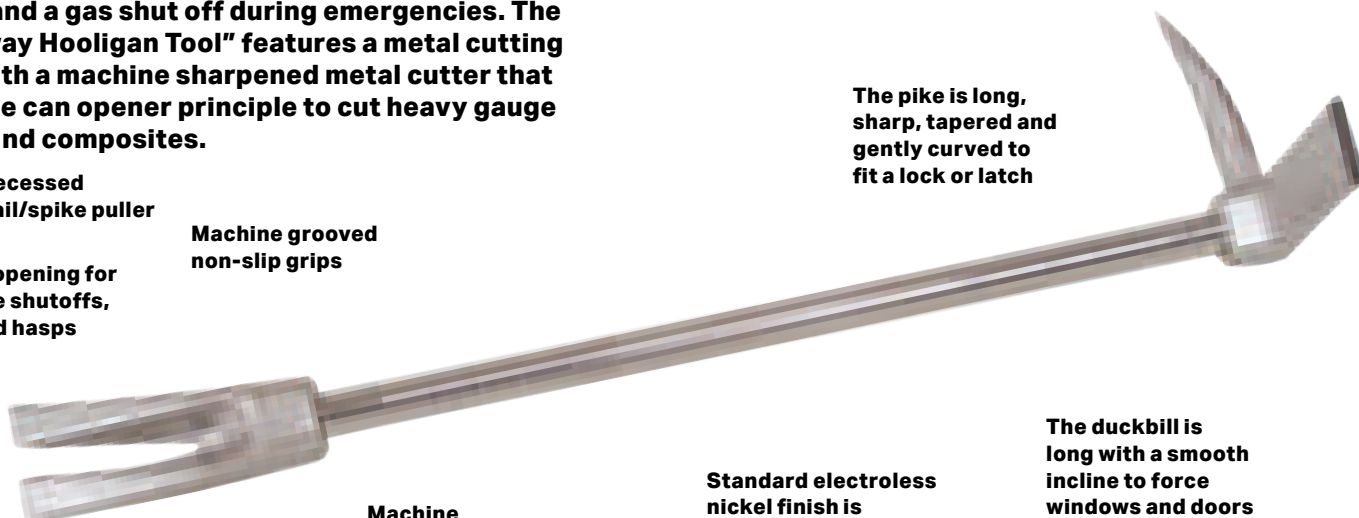
- Fire Departments
- Law Enforcement Agencies
- Rescue Squads
- Hazmat Teams
- Plant/Refinery Maintenance Crews
- Military and Public Utilities

Recessed  
nail/spike puller

Parallel opening for  
gas valve shutoffs,  
locks and hasps

Machine grooved  
non-slip grips

The pike is long,  
sharp, tapered and  
gently curved to  
fit a lock or latch



Machine  
sharpened claws

Standard electroless  
nickel finish is  
available for good  
looks and easy  
maintenance

The duckbill is  
long with a smooth  
incline to force  
windows and doors

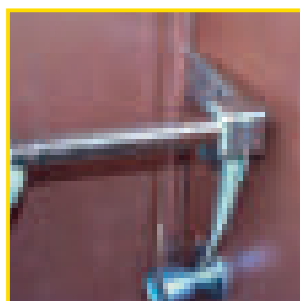


### Standard Claw:

Parallel opening for gas  
valve shutoffs, locks and  
hasps. Machine sharpened  
claws. Recessed nail puller.  
Claw radius for prying  
leverage.

### Metal Cutting Claw:

Combines the capability of  
prying and metal cutting.  
Machine sharpened  
metal cutter uses can  
opener principle to cut  
heavy gauge metal and  
composites.



## Hooligan Tool with Standard Claw Electroless Nickel Finish



Part No.	Description	Length		Net Weight	
		in	cm	lb	kg
22-000599	24 in / 61,0 cm Hooligan Tool	24.0	61,0	9.2	4,2
22-000600	30 in / 76,2 cm Hooligan Tool (pictured)	30.0	76,2	10.6	4,8
22-000601	36 in / 91,4 cm Hooligan Tool	36.0	91,4	11.9	5,4
22-000602	42 in / 106,7 cm Hooligan Tool	42.0	106,7	13.2	6,0

## Hooligan Tool Lightweight

Aluminum Handle and Standard Claw with Electroless Nickel Finish



Part No.	Description	Length		Net Weight	
		in	cm	lb	kg
22-000424	24 in / 61,0 cm Hooligan Tool - Lightweight (pictured)	24.0	61,0	6.8	3,1
22-000430	30 in / 76,2 cm Hooligan Tool - Lightweight	30.0	76,2	7.3	3,3

# Forcible Entry Tools

## Highway Hooligan with Metal Cutting Claw with Electroless Nickel Finish



Part No.	Description	Length		Net Weight	
		in	cm	lb	kg
22-000622	30 in / 76,2 cm Highway Hooligan Tool	30.0	76,2	10.6	4,8
22-000623	36 in / 91,4 cm Highway Hooligan Tool (pictured)	36.0	91,4	11.9	5,4
22-000624	42 in / 106,7 cm Highway Hooligan Tool	42.0	106,7	13.3	6,0

## SPF Hooligan Single Piece Forged

Part No.	Description	Length		Net Weight	
		in	cm	lb	kg
22-000680	SPF Hooligan 30 in / 76,2 cm	30.0	76,2	9.7	4,0

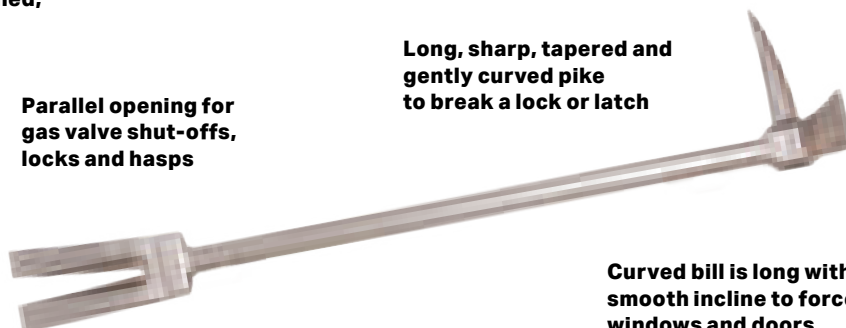
The **SPF Hooligan** is a **single piece forged (SPF)** tool intended to exceed **FDNY specifications** for their primary hand held forcible entry tools. It is the very first redesigned, (features included) single piece Halligan type tool.

### Features

- Single piece, closed die
- Forging for absolute consistent lengths
- Recessed nail puller type claw, a thin curved profile
- Cable groove at the rear of the tool head
- Electroless nickel plating

Parallel opening for gas valve shut-offs, locks and hasps

Long, sharp, tapered and gently curved pike to break a lock or latch



Thinnest claw on the market designed for better wedging

Curved bill is long with a smooth incline to force windows and doors

## Tactical SPF Hooligan Single Piece Forged



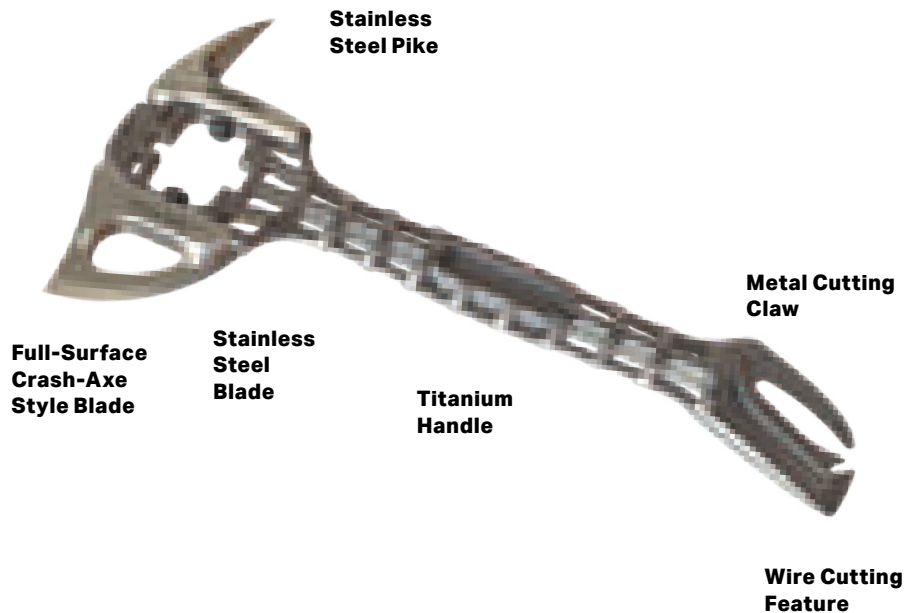
Part No.	Description	Length		Net Weight	
		in	cm	lb	kg
22-000680T	Tactical SPF Hooligan	30.0	76,2	9.7	4,4



## Titan Crash Axe

Part No.	Description	Length		Net Weight	
		in	cm	lb	kg
22-000120	Crash Axe	15.69	39,87	2.5	1,13

Paratech's TITAN CRASH AXE takes lightweight, multi-function rescue hand tools to the next level. Designed with input from the Air Force's Pararescuemen(PJs), Paratech's TITAN CRASH AXE is high-tech and low-drag.

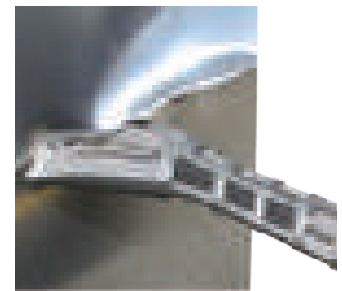


### Features

- Super lightweight titanium handle
- Replaceable & interchangeable stainless steel blade and Pike
- Total weight of under 3 lbs.
- Large, full-surface Crash-Axe Style Blade
- Integrated metal cutting claw with wire cutting feature
- "Future ready" for new blades, pikes, picks and more



STAINLESS STEEL PIKE



ANGLED METAL CUTTING CLAW



**TiTan Crash Axe Blade**  
Length: 3.1 in 7,87 cm  
Net Weight: 1.5 lb / 0,68 kg  
Part No. 22-000123



**TiTan Crash Axe Pike**  
Length: 3.23 in 8,2 cm  
Net Weight: 0.49 l / 0,22 kg  
Part No. 22-000127



**STAINLESS STEEL TOPCUT BLADE**



**INTEGRATED WIRE CUTTER**

# Forcible Entry Tools

## Pry-Axe

Here is a tool that has withstood the test of time. For over 40 years the Pry-Axe has remained the best selling tool in our line. The Pry-Axe is being used by fire departments, police departments and rescue squads worldwide.

The Pry-Axe is a lightweight, multi-purpose, 'Slam & Ram' tool designed to pry, enlarge openings, cut sheet metal and twist off locks and latches. This efficient tool lets every firefighter force entry, rescue and ventilate without waiting for help. The Pry-Axe is small enough to carry and rugged enough for most jobs.

The Pry-Axe head and claw assemblies are separate sections forged from high alloy steel and heat treated for maximum strength. A molded rubber sleeve over the handle provides a non-slip grip. The Pry-Axe is electroless nickel plated for good looks and easy maintenance.



**Pry-Axe with Metal Cutting Claw**  
Length: 18.4 in 46,7 cm  
Net Weight: 6.6 lb / 3,0 kg  
Part No. 22-000522



**Pry-Axe with Standard Claw**  
Length: 18.4 in 46,7 cm  
Net Weight: 6.6 lb / 3,0 kg  
Part No. 22-000520



**Standard Claw**  
Length: 15.1 in 38,4 cm  
Net Weight: 2.5 lb / 1,4 kg  
Part No. 22-000322s



**Replacement Pry-Axe Head**  
Length: 13.3 in 33,8 cm  
Net Weight: 4.1 lb / 1,9 kg  
Part No. 22-000525



**Pry-Axe Holster**  
Length: 19.0 in 48,3 cm  
Net Weight: 0.7 lb / 0,3 kg  
Part No. 22-000506



**Metal Cutting Claw**  
Length: 15.1 in 38,4 cm  
Net Weight: 2.45 lb / 1,1 kg  
Part No. 22-000324



**Pry-Axe Sheath**  
Length: 8.7 x 18.8 in 26,7 x 47,8 cm  
Net Weight: 0.5 lb / 0,5 kg  
Part No. 22-000505



**Compact Claw**  
Length: 13.25 in 33,66 cm  
Net Weight: 2.13 lb / ,97 kg  
Part No. 22-000321

## Biel Tool

Part No.	Length		Net Weight	
	in	cm	lb	kg
22-000550	15.1	38,3	3.3	1,5

The Biel Tool is one piece made out of heat treated, electro-polished, stainless steel with an extremely durable ergonomically rubber molded handle.

The Biel Tool incorporates many of the features found in the world famous Paratech 'Pry-Axe', but is much smaller and light enough to wear on a belt or carry in the pocket of a bunker coat. This is the perfect personal size multi-purpose forcible entry and rescue tool, designed for forcing doors and windows, prying and twisting hasps and locks, light overhauling, nail removal, gas shutoff, metal cutting and chopping.



**Biel Sheath**  
Length: 7.3 in 18,5 cm  
Net Weight: 0.1 lb 0,05 kg  
Part No. 22-000555



**Biel Holster**  
Length: 16.0 in 40,6 cm  
Net Weight: 0.5 lb 0,24 kg  
Part No. 22-000545

## PRT Rescue Kit

Part No.	Description	Length		Net Weight	
		in	cm	lb	kg
22-000625	PRT Rescue Kit	31.5	80,0	29,0	13,2

The PRT Rescue Kit includes a variety of interchangeable tool bits to penetrate most barriers.

### 'SLAM AND RAM'

Action of the PRT directs all of its force directly at the point of impact

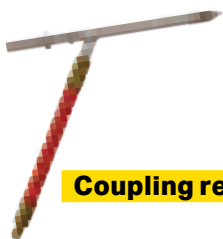


The PRT is a powerful hand held rescue tool that can be put to work with a minimal amount of training. Primarily designed for fast, forcible entry, one person can quickly pry open locks and doors in seconds and easily break through brick and concrete block walls within a few minutes.

The 'Slam & Ram' action of the PRT directs all of its force directly at the point of impact - without deflection, making it safer and more effective than a sledge and wedge.

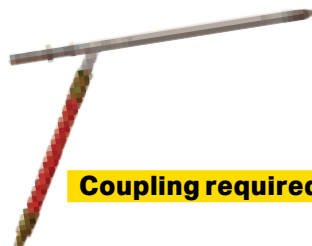
This heavy duty rescue tool is easily stored and transported, so it can always be... the first tool to the rescue.

## PRT Accessories



**Coupling required**

**PRT PIERCING APPLICATOR 6**  
6 in / 15.2 cm WALL  
PENETRATION  
Overall length: 18.7  
in / 47,5 cm  
Net Weight: 5.12lb / 2,32kg  
Part No. 22-098106



**Coupling required**

**PRT PIERCING APPLICATOR 14**  
14 in / 35.6 cm WALL  
PENETRATION  
Overall length: 27.1 in / 69 cm  
Net Weight: 6.24lb / 2,83kg  
Part No. 22-098114



**1 1/2 in NH (NST) COUPLING**  
Part No. 22-550320  
**1 1/2 in NPSH (IPT) COUPLING**  
Part No. 22-550330  
Length: 3.1 in / 7,9 cm  
Net Weight: 1.5 lb / 0,7 kg



**PRT Picket Driver Bit**  
Length: 8.8 in 22,4 cm  
Net Weight: 1.5 lb / 0,7 kg  
Part No. 22-000634



## Powered Impact

From Breaking Concrete, to Cutting the Remains of a Melted Tanker Shell Apart, it Delivers the Punch.

### PAKHAMMER

At only 11.3 lb / 5,1 kg and at 1000-1100 high impact blows per minute this PIT dramatically increases the range of rescue work for initial responding units

Made from S7 tool steel and heat treated for long life, all PIT kits come equipped with a wide variety of standard and specialized tool bits.

# Powered Impact Tools

Paratech's Powered Impact Tools (PIT) are designed for forcible entry during fire fighting and rescue operations. They are used for cutting metal and composites, breaking masonry walls, penetrating concrete floors, forcible entry and digging during tunneling operations. Paratech's PITs consume air only on the power stroke. This unique, patented design provides a pneumatic impact and penetrating device with an adjustable power output and very low air consumption.



**CRASH RESCUE FROM AIRCRAFT:**  
Cut skins, spars, canopies.

**CRASH FIRE FIGHTING:**  
Piercing applicator for dispensing extinguishing agents.

**EXTRICATION:**  
From automobiles, trucks, transportation accidents.

**DISASTER RESCUE:**  
Earthquake, collapse.

**PNEUMATIC IMPACT PENETRATOR:**  
Use in rescue or industry.

**RESCUE/FORCIBLE ENTRY:**  
Break doors, locks, padlocks, hasps.

**DAMAGE CONTROL:**  
Access to compartments through watertight doors, heavy sheet metal.

**BREAKS AND PUNCHES HOLES:**  
Concrete, asphalt.

The combined features of light weight, very low air consumption and a wide range of power settings make Paratech's Pakhammer extremely effective for rescue and fire fighting operations.

Rescue workers may find themselves temporarily blocked by a masonry wall or faced with the need to penetrate a concrete floor. Building collapse often requires power assisted digging for access to victims.



# Powered Impact Tools

## PakHammer Kit

Part No.	Description	Net Weight	
		lb	kg
22-550505	US	29.9	—
22-550505D	Metric	—	13,6

Part No.	Description	Quantity
22-550500G2	Pakhammer, with Inline Oiler	1
22-895400G3	Pressure Regulator 5,500-0 psi / 379,2-0 bar	1
22-890520	Air Hose 3/8 in / 9,5 mm dia. x 32 ft / 10 m YELLOW	1
22-550582	Chisel S Bit	1
22-550584	Curved Metal Cutter Bit	1
22-550586	Bullpoint S Bit	1
22-550291	Oil, lubricating, 4 oz / 124 g	1
22-550094	Allen Wrench 7/32 in / 0,6 cm	1
22-550099	Allen Wrench 3/16 in / 0,5 cm	1
22-550096	Manual, Operating and Instruction	1
22-700235	Goggles, plastic safety	1



A 1000–1100 high impact blows per minute, 11 pound/ 5 kg impact tool that dramatically increases the range of forcible entry and rescue work initial responding units can handle without calling up heavy equipment. The Pakhammer is the only pneumatic impact tool of its size that is designed to operate from portable air cylinders. It is an ideal tool for bus and train rescue, high rise work, collapse rescue or any situation that requires a powerful impact tool that operates from a limited air supply.

### Pakhammer Kit Technical Data

Length (without bit)	27.6 in / 70,1 cm
Weight (Pakhammer without bit)	11.3 lb / 5,1 kg
Air Pressure Range	40-200 psi / 2,7-13,7 bar

Air Consumption at 175 psi (12 bar)	18 SCFM / 510 l/min
Blows/Minute (approx.)	1000-1100
Kit Weight:	29 lb / 13,6 kg
Shank Size	0.401 in / 1,0 cm

## ARFF Grab and Go Kit

Part No.	Description	Net Weight	
		lb	kg
22-550ARFF	US	29.9	—
22-550ARFFD	Metric	—	13,6

Part No.	Description	Quantity
22-550500G2	Pakhammer, with Inline Oiler	1
22-895400G3	Pressure Regulator G3 5,500-0 psi / 379,2-0 bar	1
22-890547	Air Hose 3/8 in / 9,5 mm dia. x 8 ft / 10 m YELLOW	1
22-550251	Piercing Applicator - 14 14 in / 35,6 cm	1
22-550584	Curved Metal Cutter Bit	1
22-550273	Heavy Duty Metal Cutter Bit	1
22-550291	Oil, lubricating, 4 oz / 124 g	1
22-550094	Allen Wrench 7/32 in / 0,6 cm	1
22-550099	Allen Wrench 3/16 in / 0,5 cm	1
22-550591	Panel Cutter with Relief for Aircraft Windows Bit	1
22-550379	Ballistic Nylon Carrying Case 14"H x 34"L	1
22-550246	Neoprene Plug 4 in / 10,2 cm 3/4 in-1.5 in / 1,9-3,8 cm Diameter	2
22-550598	Plug Driver	1
22-550320	Coupling	1
22-550380A	Tool Bit Pouch	1



This multipurpose kit is designed to handle numerous functions in ARFF. Includes a cutting bit designed to cut aircraft windshields and canopies, a cutting bit to cut sheet metal, a plug driver bit and neoprene plugs for leak sealing, piercing nozzle that can penetrate the GLARE composite skin as well as, CFRP (Carbon Fiber Reinforced Plastic). The 14" Piercing nozzle can flow water or chemical firefighting agents like foam etc. to help put out fires. This Grab and Go kit also includes the Paratech Pakhammer, designed to use with a limited air supply, uses less air and hits harder than any other tool of its kind and can go much longer before an air change is needed. Other pieces of equipment in this versatile kit are an adjustable regulator that can operate the tool at a range of 40 psi to 200 psi.

### ARFF Grab and Go Kit Technical Data

ARFF Grab and Go Kit Technical Data	27.6 in / 70,1 cm
Length (Pakhammer without bit)	27.6 in / 70,1 cm
Weight (Pakhammer without bit)	11.3 lb / 5,1 kg
Air Pressure Range	40-200 psi / 2,7-13,7 bar

Air Consumption at 175 psi (12 bar)	18 SCFM / 510 l/min
Blows/Minute (approx.)	1000-1100
Kit Weight	29 lb / 13,6 kg
Shank Size	0.401 in / 1,0 cm





## Pakhammer Bits



**CURVED METAL CUTTER**  
10.25 in / 26 cm - 1.2  
in / 3 cm wide  
Net Weight: .6lb / 0,3kg  
22-550584



**DUAL CUTTER**  
11 in / 27,9 cm  
Net Weight: 1.0lb / 0,5kg  
22-550592



**DUAL CUTTER WITH  
BULLPOINT**  
11 in / 27,9 cm  
Net Weight: 1.0lb / 0,5kg  
22-550594



**HEAVY DUTY METAL CUTTER**  
11 in / 27,9 cm - 0.5 in /  
1,3 cm - depth of cut  
Net Weight: 1.0lb / 0,5kg  
22-550273



**LOCK BREAKER**  
11 in / 27,9 cm  
Net Weight: 1.0lb / 0,5kg  
22-550596



**BULLPOINT-S**  
14 in / 35,6 cm  
Net Weight: 1.2lb / 0,5kg  
22-550586



**BULLPOINT-L**  
20 in / 50,8 cm  
Net Weight: 1.8lb / 0,8kg  
22-550588



**CHISEL-S**  
14 in / 35,6 cm - 1.0  
in / 2,5 cm wide  
Net Weight: 1.3lb / 0,6kg  
22-550582



**CHISEL-L**  
20 in / 50,8 cm - 1.0  
in / 2,5 cm wide  
Net Weight: 1.3lb / 0,6kg  
22-550583



**PANEL CUTTER FOR METALS**  
8 in / 20,3 cm - 1.2  
in / 3 cm deep  
Net Weight: 0.8lb / 0,4kg  
22-550590



**PANEL CUTTER WITH  
RELIEF FOR AIRCRAFT  
WINDOWS**  
8 in / 20,3 cm - 1.2  
in / 3 cm deep  
Net Weight: 0.8lb / 0,4kg  
22-550591



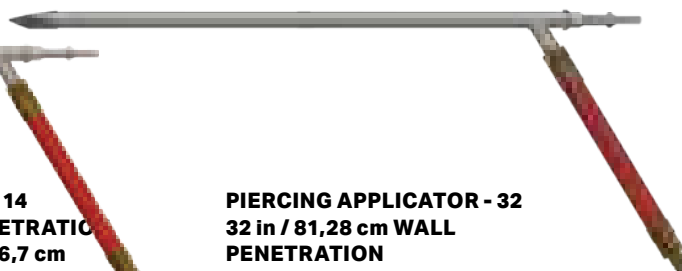
**SPADE 3 IN / 7,6 CM WIDE**  
20 / 50,8 cm  
Net Weight: 1.3lb / 0,6kg  
22-550595



**PIERCING APPLICATOR - 6**  
6 in / 15,2 cm WALL  
PENETRATION  
Overall length: 17.8 in / 45,2 cm  
Net Weight: 4.4lb / 2,0kg  
22-550241



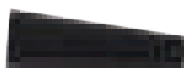
**PIERCING APPLICATOR - 14**  
14 in / 35,6 cm WALL PENETRATION  
Overall length: 26.3 in / 66,7 cm  
Net Weight: 5.5lb / 2,5kg  
22-550251



**PIERCING APPLICATOR - 32**  
32 in / 81,28 cm WALL  
PENETRATION  
Overall length: 44.3 in / 112,5 cm  
Net Weight: 7.75lb / 3,5kg  
22-550261



**PLUG DRIVER**  
Net Weight: 1.0lb / 0,5kg  
22-550598



**NEOPRENE PLUG 4 in / 10,2 cm**  
LG 0.75 - 1.5 in / 1.9 - 3,8 cm DIA  
For use with plug driver  
Net Weight: 0.5lb / 0,2kg  
22-550246

## Pakhammer With Inline Oiler

Part No. 22-550500G2 Net Weight: 11.1lb / 5,0kg



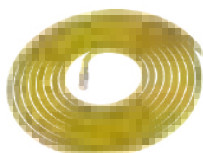
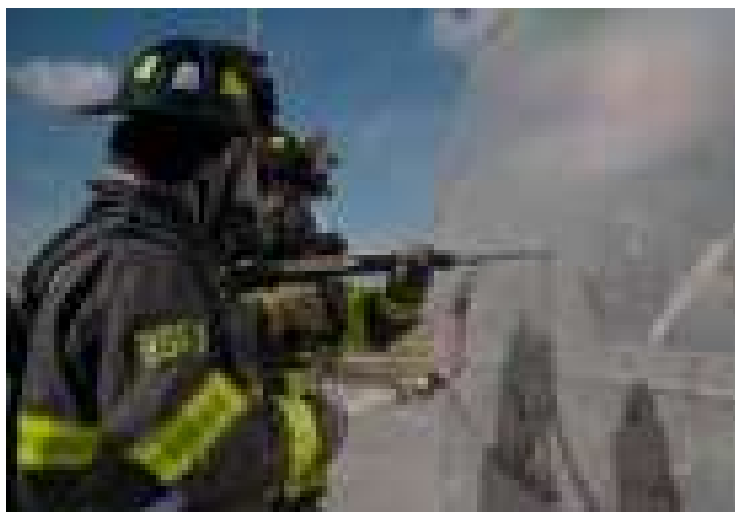
## Pakhammer Accessories



**PRESSURE REGULATOR G3**  
Piston Type 5,500-300 psi /  
379,2-20,7 bar  
Net Weight: 3.6lb / 1,6kg  
22-895400G3



**PRESSURE REGULATOR G3**  
Piston Type 5,500-300 psi /  
379,2-20,7 bar DIN  
Net Weight: 3.7lb / 1,7kg  
22-895400DG3



**AIR HOSE YELLOW**  
3/8 in / 9,6 mm dia.  
- 32 ft / 10 m  
Net Weight: 4.5lb / 2,1kg  
22-890520



**AIR TOOL OIL**  
Net Weight: 0.3lb / 0,1kg  
22-550291



**COUPLING**  
for piercing applicator  
NH 5/8 in / 1 1/2 in  
Net Weight: 1.5lb 0,7kg  
22-550320

**NPSH 5/8 in / 1 1/2 in**  
Net Weight: 1.5lb / 0,7kg  
22-550330



**ALLEN WRENCH**  
7/32 in / 0.6 cm  
Net Weight: 0.1lb 0,1kg  
22-550094  
3/16 in / 0.5 cm  
Net Weight: 0.1lb / 0,1kg  
22-550099



# Damage Control Systems

## Damage Control System (DCS)

### Direct Compression



I-Type, can be used vertically or horizontally and is the simplest and strongest as it is parallel to the load axis (see table).

### Cross-Axial



H-Type, can be used vertically or horizontally and takes moderate pressure (see table) as the pressure acts perpendicular to the load axis.

### Triangulation



K-Type, can be used vertically or horizontally and takes full pressure (see table) as the pressure acts parallel to the load axis.

The most important factor you get with Paratech's DCS is time! With incoming water comes increasing depth and with that, higher water pressure...one of the most unforgiving vicious cycles has begun. To break the cycle you need time...time to build shoring that can slow the incoming water enough for the pumps to keep up...

The Paratech Damage Control System will provide that break.

The Paratech Damage Control System (DCS) brings maritime damage control shoring into the 21st century. Speed, strength, flexibility and capability are the hallmarks of Paratech's DCS. Everything about the system has been engineered to simplify the difficult task Damage Control Teams have to face in the harsh and often dangerous working environments they have to perform in. With the Paratech DCS you will achieve setup speeds never seen with any wood-based system. A standard K brace can be set and fitted within one minute by an experienced team. The system is very logical and user-friendly for unexperienced crew members as well. All components of Paratech's DCS are machined from aircraft grade aluminum for superior strength and hard-coat anodized for maximum salt-spray protection. Designed to last and perform, the DCS makes damage control shoring faster, safer and easier than ever before.

### Shoring

Placing support against, beneath or above the damaged areas and preventing additional sagging, bulging and metal fatigue.

Length		Axial load 2:1	
Feet	cm	lb	kg
1'	30,5	44000	20000
2'	61,0	44000	20000
3'	91,4	44000	20000
4'	121,9	44000	20000
5'	152,4	44000	20000
6'	182,9	44000	20000
7'	213,4	44000	20000
8'	243,8	40000	18000
9'	274,3	32000	14500
10'	304,8	24000	11000
11'	335,3	20000	9000
12'	365,8	16000	7250
13'	396,2	14000	6250
14'	426,7	12000	5500
15'	457,2	9000	4000
16'	487,7	6000	2750

## Damage Control Kit-A

### 22-79800AK

The Damage Control Kit-A is designed for vessels larger than 260ft (80m), such as Frigates, Corvettes, Cruise Ships and Tankers. \*Multiple kits should be positioned.

Part No.	Description	Quantity
22-798S03	Damage Control Shore 03	4
22-798S06	Damage Control Shore 06	4
22-798S10	Damage Control Shore 10	4
22-798B01	Damage Control Brace 01	6
22-798X01	Damage Control Extension 01	3
22-798X02	Damage Control Extension 02	3
22-798X04	Damage Control Extension 04	2
22-798E00	Damage Control Rubber End	12
22-798E02	Damage Control Rail End 02	2
22-798E04	Damage Control Rail End 04	1
22-798E06	Damage Control Angled End	1
22-798E08	Damage Control Rubber Corner End	8
22-798E10	Damage Control Rubber Angled End	2
22-798C10	Damage Control Latch Connector	16
22-798C20	Damage Control Clamp & Clevis Connector	12
22-798A00	Damage Control Rubber Pad	10
22-796689	Latch Holder	4
22-798027	Damage Control Spanner	4



## Damage Control Kit-B

### 22-79800BK

The Damage Control Kit-B is designed for vessels between 165ft (50m) and 260ft (80m), such as Minesweepers, Workboats and small Ferries. \*Multiple kits should be positioned.

Part No.	Description	Quantity
22-798S03	Damage Control Shore 03	2
22-798S06	Damage Control Shore 06	2
22-798S10	Damage Control Shore 10	2
22-798X01	Damage Control Extension 01	2
22-798X02	Damage Control Extension 02	2
22-798X04	Damage Control Extension 04	1
22-798B01	Damage Control Brace 01	4
22-798E00	Damage Control Rubber End	10
22-798E02	Damage Control Rail End 02	1
22-798E04	Damage Control Rail End 04	1
22-798E06	Damage Control Angled End	1
22-798E08	Damage Control Rubber Corner End	5
22-798E10	Damage Control Rubber Angled End	1
22-798C10	Damage Control Latch Connector	12
22-798C20	Damage Control Clamp & Clevis Connector	8
22-796689	Latch Holder	3
22-798027	Damage Control Spanner	2
22-798A00	Damage Control Rubber Pad	7





# Damage Control Systems

## Damage Control Kit-C

### 22-79800CK

The Damage Control Kit-C is designed for vessels between 100ft (30m) and 200ft (60m), such as Patrol vessels and smaller Workboats. \* Multiple kits should be positioned.

Part No.	Description	Quantity
22-798S06	Damage Control Shore 06	2
22-798S10	Damage Control Shore 10	1
22-798X01	Damage Control Extension 01	2
22-798X02	Damage Control Extension 02	1
22-798X04	Damage Control Extension 04	1
22-798B01	Damage Control Brace 01	3
22-798E00	Damage Control Rubber End	6
22-798E02	Damage Control Rail End 02	1
22-798E04	Damage Control Rail End 04	1
22-798E06	Damage Control Angled End	1
22-798E08	Damage Control Rubber Corner End	2
22-798E10	Damage Control Rubber Angled End	1
22-798C10	Damage Control Latch Connector	9
22-798C20	Damage Control Clamp & Clevis Connector	5
22-796689	Latch Holder	3
22-798027	Damage Control Spanner	2
22-798A00	Damage Control Rubber Pad	7

# Of Decks	Qty Of Kit-C
2	1
6	3
10	4



## Damage Control Kit-D

### 22-79800DK

The Damage Control Kit-D is designed for smaller vessels under 100ft (30m).

Part No.	Description	Quantity
22-798S03	Damage Control Shore 03	2
22-798S10	Damage Control Shore 10	1
22-798B01	Damage Control Brace 01	1
22-798E00	Damage Control Rubber End	3
22-798E02	Damage Control Rail End 02	1
22-798E08	Damage Control Rubber Corner End	2
22-798C10	Damage Control Latch Connector	3
22-798C20	Damage Control Clamp & Clevis Connector	3
22-798027	Damage Control Spanner	1
22-798A00	Damage Control Rubber Pad	4

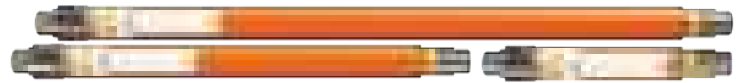
# Of Decks	Qty Of Kit-D
2	1
6	2





## Damage Control Shores

Damage Control Shores offer the end user the ability to manually extend the shore to desired length. The Damage Control Shore always defaults to a locked position.



Part No.	Description	Length		Net Weight		Ship Weight	
		in	cm	lb	kg	lb	kg
22-798S03	Damage Control Shore 03	25-36	66-91	13.7	6.2	14.7	6,7
22-798S06	Damage Control Shore 06	47-73	122-185	26.0	11.8	27.0	12,3
22-798S10	Damage Control Shore 10	71-116	183-295	39.3	17.8	40.3	18,3

## Damage Control Extensions

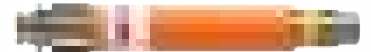
Paratech offers Damage Control Extensions in three sizes: 12" / 30,5 cm, 24" / 61 cm and 48" / 122 cm. Extensions are attached to the solid end of the shore.



Part No.	Description	Length		Net Weight		Ship Weight	
		in	cm	lb	kg	lb	kg
22-798X01	Damage Control Extension 01	12	30,5	6.3	2,9	7.3	3,3
22-798X02	Damage Control Extension 02	24	61	9.4	4,3	10.4	4,8
22-798X04	Damage Control Extension 04	48	122	15.4	7,0	16.4	7,4

## Damage Brace

Greatly extend the flexibility and strength of your Paratech Damage Control System with a heavy duty brace.



Part No.	Description	Length		Net Weight		Ship Weight	
		in	cm	lb	kg	lb	kg
22-798B01	Damage Control Brace	26	66	15.0	6,8	16.0	7,3

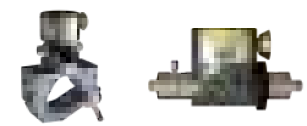
## Damage Control Ends

6 different ends in the system offer the possibility of making a variety of shores for Damage Control. The 4" Paratech Damage Control End should always be in one end of a shore used when flex in the hull is predicted.



Part No.	Description	Length		Net Weight		Ship Weight	
		in	cm	lb	kg	lb	kg
22-798E00	Damage Control Rubber End	4	10,2	1.9	0,9	2.2	1,0
22-798E02	Damage Control Rail End 02	24	61	6.8	0,1	7.3	3,3
22-798E04	Damage Control Rail End 04	48	122	13.8	6,3	14.5	6,6
22-798E06	Damage Control Angled End	7.6	19,3	2.9	1,3	3.2	1,6
22-798E08	Damage Control Rubber Corner End	6.81	17,3	6.3	2,8	6.3	2,8
22-798E10	Damage Control Rubbered Angled End	9.25	23,5	5.4	2,4	5.7	2,6

## Damage Control Connectors



Part No.	Description	Net Weight		Ship Weight	
		lb	kg	lb	kg
22-798C10	Damage Control Latch Connector	3,2	1.5	3.5	1,6
22-798C20	Damage Control Clamp & Clevis Connector	6.6	3,0	6.9	3,1

## Damage Brace



Part No.	Description	Length		Net Weight		Ship Weight	
		in	cm	lb	kg	lb	kg
22-798A00	Damage Control Rubber Pad	6.75	17,12	.96	0,45	.99	,45
22-796689	Latch Holder	15.0	38,1	4.1	1,9	4.6	2,1
22-798027	Damage Control Spanner	13.23	33,60	.55	0,25	.58	,26

## Training Companies

### Western Hemisphere

- Advanced Rescue Solutions
- Blue Collar Training Network
- Edelweiss Rescue Service Limited
- Illinois Fire Service Institute
- Michigan Urban Search and Rescue
- North Net Training
- Progressive Fire Solutions Ltd.
- Edelweiss Rescue Service Limited
- Rescue 4 Operations
- RS Rescue Canada
- RSS Chile
- Special Operations Consulting Canada
- SPEC Rescue International
- SoFlo Technical Rescue Training
- TEEX

### Eastern Hemisphere

- Heavy Rescue Germany
- IRRTC United Kingdom
- Outreach United Kingdom
- TRI United Kingdom

Learn More



**Order the Paratech Technical Rescue Field Guide here!**



## Ordering Terms, Conditions & Warranty

**ORDERING WITH CREDIT CARD USING VISA, MASTER CARD AND AMERICAN EXPRESS ONLY:**  
We accept orders via mail, e-mail and fax. When ordering, be sure to include the item number and exact quantity of each item.

### ORDERING BY PURCHASE ORDER:

Orders from municipalities and fire protection districts will be re-directed to the appropriate Paratech Dealer. Terms are net 30 days with approved credit.

### ORDER CONFIRMATION:

Order Confirmations are sent via e-mail or fax. The confirmation is our understanding of your order requirements. Discrepancies between your order and the confirmation should be reported at once.

### PRICING:

All orders will ship with current pricing as indicated on your confirmation.

### MINIMUM ORDER REQUIREMENT:

Orders under \$50.00 will assess an additional \$25.00 fee for processing and handling.

### FREIGHT (DOMESTIC TRUCK SHIPMENTS):

F.O.B. our plant, Frankfort, IL, U.S.A. Special shipping instructions must be made at time of order. Charges will not appear on Order Confirmation.

### FREIGHT (UPS or FedEx):

Handling and freight charges will be added to invoice. Charges will not appear on order confirmation.

### FREIGHT (INTERNATIONAL SHIPPING):

EXW Paratech Inc. (815-469-3911) or Paratech Europe (+45-66-11-24-22). Contact Customer Service for special shipping instructions. Charges will not appear on Order Confirmation.

### BACK ORDER POLICY:

Due to unexpected demand, we may be temporarily out of stock on certain items. If you place an order for any merchandise that is currently not available, we will contact you regarding your order via phone or email. You will have the option of placing the order on hold or obtaining the "in-stock" items and receiving a 2nd shipment with the back-ordered items at a later date. Handling and freight will apply to the 2nd shipment.

### RETURNING MERCHANDISE:

Customer Service must authorize all returned merchandise in advance. Please contact the company for a Returned Goods Authorization Number (RGA#). Warranty replacements/returns for credit must go through the selling dealer. A minimum 15% restocking charge may apply.

### WARRANTIES:

#### Paratech Product Warranties:

- Rescue Support Systems / 5 years
- MAXIFORCE® Air Lifting Bags / 3 years
- MULTIFORCE® Air Lifting Bags / 3 years
- Powered Impact Tools / 1 year
- Rescue Air Cushions / 1 year
- Forcible Entry Tools / Limited Lifetime
- Damage Control Systems / 5 years





Our products are designed to be used in situations that often result in the saving of lives, the prevention or reduction of bodily injuries, the preservation of our environment, and the protection of property. Unfortunately, many of these incidents go unnoticed and are quickly forgotten.

Paratech would appreciate you taking a few moments to share these incidents with us by completing the Rescue Award application and filling out our online application at <https://www.paratech.us/submit-rescue-award>. We will send each active participant of your rescue our distinctive Rescue Award emblem and certificate. A separate award will be awarded in the name of the individual's unit.

The Rescue Awards we offer correspond to our main product groups:

- RSS - Rescue Support Systems
- MAXIFORCE® & MultiForce® - Air Lifting Bags
- RAC - Rescue Air Cushions
- PIT - Powered Impact Tools
- FET - Forcible Entry Tools
- DCS - Damage Control System

There is no limit to the amount of awards you may apply for. Paratech hopes you will apply after each and every incident involving the successful use of a Paratech product. Each award application we receive is shared with our employees and will be posted on our website for the world to see your accomplishments using Paratech equipment. The awards you receive are a tremendous source of pride for all of us here at Paratech.

## GO TO

**Scan The QR Code Below.**





# Contacts

**PARATECH USA &  
Customer Service**

Office: +1 815 469 3911  
Fax: +1 815 469 7748  
Email: [paratech@paratech.com](mailto:paratech@paratech.com)

**Sales Manager,  
Eastern Hemisphere**

**BELIT TASDEMIR**  
Mobile: +44 7899 831 538  
[BTasdemir@paratech.com](mailto:BTasdemir@paratech.com)

**PARATECH EUROPE &  
Customer Service**

Office: +45 66 11 24 22  
Fax: +45 66 11 24 32  
Email: [paratech@paratech.eu](mailto:paratech@paratech.eu)

**Sales Manager,  
Western Hemisphere**

**MIKE ULIBARRI**  
Mobile: +1 801 425 4874  
[MUlibarri@paratech.com](mailto:MUlibarri@paratech.com)

**Chief Executive  
Officer**

**HANS FRANK NORMOLLE**  
Mobile: +1.815 277 6810  
[HFNormolle@paratech.com](mailto:HFNormolle@paratech.com)

**Training  
Manager**

**NIGEL LETHERBY**  
Mobile: +1 815 325 1886  
[Nletherby@paratech.com](mailto:Nletherby@paratech.com)

**Western Hemisphere Sales Team**

**CHRIS FRAMSTED**  
Regional Sales Manager  
AL, AR, FL, GA, LA, MS, OK, TN, TX  
Mobile: +1 770 633 2997  
[CFramsted@paratech.com](mailto:CFramsted@paratech.com)

**JAMES KOLACZKOWSKI**  
Regional Sales Manager  
IA, IL, IN, KS, KY, MI, MN, MO, ND,  
NE, OH, SD, WI, WV  
Mobile: +1 336 406 9773  
[JKolaczkowski@paratech.com](mailto:JKolaczkowski@paratech.com)

**DARIN ROSS**  
Regional Sales Manager  
AZ, AK, CA, CO, HI, ID, MT,  
NM, NV, OR, UT, WA, WY  
Mobile: +1 702 994 4503  
[DRoss@paratech.com](mailto:DRoss@paratech.com)

**MICHAEL WEISS**  
Regional Sales Manager  
Canada - AB & BC  
Mobile: +1 780 222 1276  
[MWeiss@paratech.com](mailto:MWeiss@paratech.com)

**ROBERT O'DONALD**  
Regional Sales Manager  
CT, DE, MA, MD, ME, NC, NH, NJ,  
NY, PA, RI, SC, VA, VT  
Mobile: +1 843 814 9515  
[rodonald@paratech.com](mailto:rodonald@paratech.com)

**ALEX KRECHOWICZ**  
Regional Sales Manager  
Eastern Canada  
Mobile: +1 905 999 8892  
[akrechowicz@paratech.com](mailto:akrechowicz@paratech.com)

**BRENNER HIGGS**  
Regional Sales Manager  
South America, Mexico,  
Central America  
Int'l. Mobile: +56 9 2632 2486  
[bhiggs@paratech.us](mailto:bhiggs@paratech.us)

**Eastern Hemisphere Sales Team**

**DANIEL WITTE**  
Regional Sales Manager  
Northern Europe  
Int'l. Mobile: +49 17 66 34 37334  
[dwitte@paratech.com](mailto:dwitte@paratech.com)

**FRANCESCO ROSSETTI**  
Regional Sales Manager  
Africa, Southern Europe  
Int'l. Mobile: +44 79 12 31 84 61  
[FRossetti@paratech.com](mailto:FRossetti@paratech.com)

**NITIN SHINDE**  
Regional Sales Manager  
Middle East, South Asia  
Int'l. Mobile: +91 99206 64489  
[NShinde@paratech.com](mailto:NShinde@paratech.com)

**THOMAS PETERSEN**  
Operations Manager, Europe  
Regional Sales Scandinavia  
Office: +45 6611 2422  
Int'l. Mobile: +45 2940 8320  
[Tpetersen@paratech.com](mailto:Tpetersen@paratech.com)

**ERIC JIN WOO KIM**  
Regional Sales Manager  
East Asia and Oceania Asia  
Int'l. Mobile: +82 10 8713 3193  
[EJWKkim@paratech.us](mailto:EJWKkim@paratech.us)





## Locations

### Paratech Headquarters

P.O. Box 1000 Frankfort, IL 60423 USA  
Phone: +1.815.469.3911  
Fax: +1.815.469.7748  
Toll Free: +1.800.435.9358  
Email: [paratech@paratech.com](mailto:paratech@paratech.com)

### Paratech Europe

Landbrugsvej 10 N, 5260 Odense S,  
Denmark  
Phone: +45 66 11 24 22  
Fax: +45 66 11 24 32  
Email: [paratech@paratech.eu](mailto:paratech@paratech.eu)

**We take our  
Mission seriously  
because we know  
your Mission is  
often a matter of  
life or death.**

**For more information,  
Call**

**(1) 800 435 9358**

**Or visit**

**[www.pاراتech.com](http://www.pاراتech.com)**